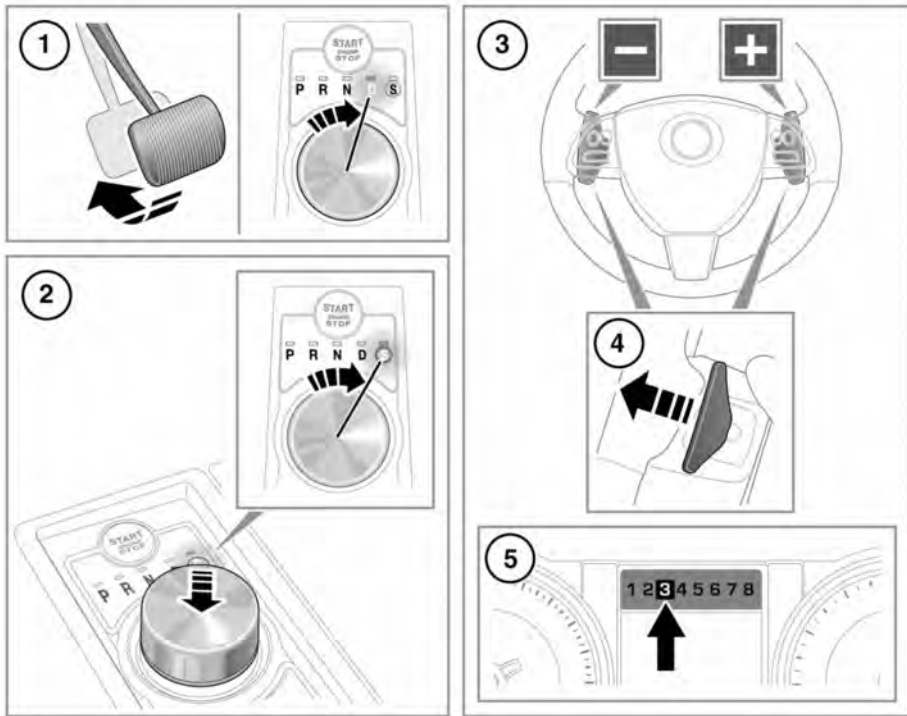


## AUTOMATIC TRANSMISSION



E143950

The rotary gear selector elevates out of the centre console when the engine is started, in readiness for gear selection.

1. To select Drive (**D**) or Reverse (**R**) gear, press the brake pedal and then turn the rotary gear selector.
2. To select Sport (**S**) mode, from **D** press the rotary gear selector down and rotate to **S**.
3. Manual mode gear shift paddles (left paddle for downshifts, right paddle for upshifts).

**Note:** The gear shift paddles can be configured to operate in '**S only**' or '**D and S only**' via the **Security/Vehicle** menu, in the Touch screen **Setup** menu. See **64**, **TOUCH SCREEN SETUP**.

4. Pull briefly to change gear. Pull the left side paddle to shift down a gear or the right side paddle to shift up a gear. To exit Manual mode, either pull and hold the shift-up paddle for approximately 1 second (to return directly to automatic operation in **D** or **S**), or if in **S**, turn the rotary gear selector to the **D** position.