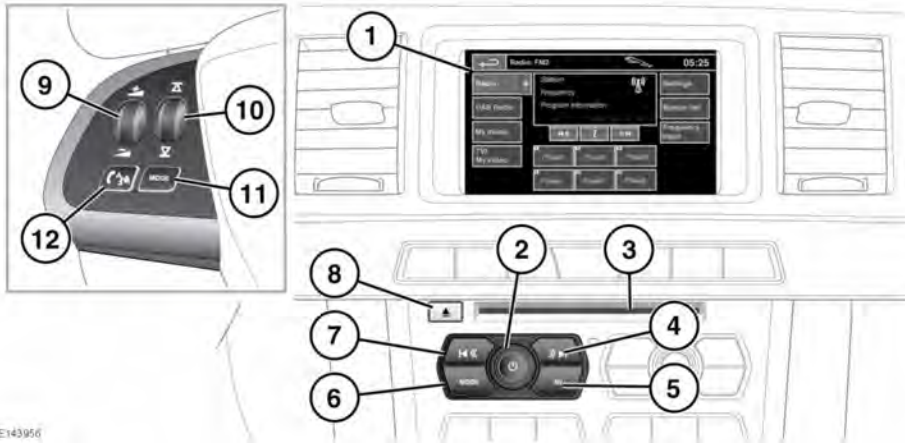




AUDIO/VIDEO CONTROLS



E143956

-  **In the interest of safety, only operate, adjust, or view the system when it is safe to do so.**
-  **Sustained exposure to high sound levels (greater than 85 decibels) can damage your hearing.**

1. Touch screen.
2. Press to switch the Audio system on/off. Rotate to adjust volume level.
Note: *The Audio system will operate with the ignition on or off, but will always switch off when the ignition is switched off. Switch the audio on again, if required.*
Note: *If the volume is turned to zero while a Compact Disc (CD) is playing, the CD will pause play. Play will resume when a greater volume is selected.*
3. CD/DVD loading slot. The player will accommodate 1 disc at a time. With Stored CD, the content of up to 10 CDs can be uploaded into the memory. Only Compact Disc Digital Audio (CDDA) discs can be uploaded into the Stored CD.

Only discs with CDDA tracks and no other type, can be uploaded to the Stored CD store. Insert a disc into the loading slot until resistance is felt. The player mechanism will complete the loading.

4. Seek up. Short press:
 - To select the next radio preset.
 - To select the next track on the chosen audio source - CD, MP3, etc.
 - To select the next TV channel on the channel list or the next DVD chapter.
 - When a paired telephone is in use, press to scroll up lists of calls or phonebook entries.
- Long press:
- To manually seek up the frequency to the next radio station or to scan forwards through the current audio source track.