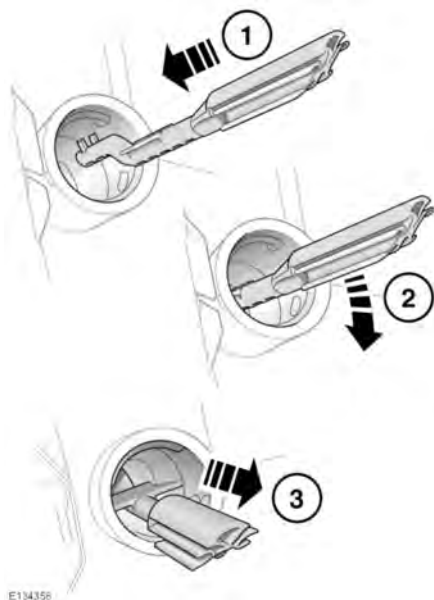


# Fuel and refuelling



The reset tool is stored in the Luggage compartment, clipped onto the battery retaining bar.

## To reset the misfuelling protection device:

1. Insert the reset tool with the teeth uppermost, as far as it will go into the filler neck.
2. Locate the teeth by pushing down the top of the reset tool.
3. With the top of the tool pressed down and the teeth engaged, slowly pull the tool out of the filler neck to reset the device.

**!** Do not twist the device, once the teeth have engaged.

**Note:** When reset, the yellow part of the misfuelling protection device should no longer be visible in the filler neck.

Replace the reset tool in position on the battery retaining bar.

## FUEL TANK CAPACITY

Avoid the risk of running out of fuel. When the fuel gauge indicates empty, there is a small fuel reserve remaining in the tank. Use this reserve to drive directly to the nearest fuel station and refuel the vehicle. You may not be able to add the full fuel quantity shown in the Capacities table as there may be a small reserve remaining in the tank. See **213, CAPACITIES**.