

WATER IN FUEL

- ❗ If the warning **WATER IN FUEL** is displayed in the Message centre, an excessive amount of water has collected in the fuel filter bowl. Seek assistance from a Dealer/Authorised Repairer to have the filter drained as soon as possible.

DIESEL ENGINES

Vehicles with diesel engines are equipped with a system to prevent the fuel tank from emptying completely. When the fuel reaches a minimum level, the system will activate a reduced power mode (i.e., the engine will not run properly). This will be followed by the engine stopping in approximately 1.6 km (1 mile).

This feature prevents the fuel system from running dry, which could cause damage to the vehicle. If the gauge indicates low fuel or the warning indicator illuminates, the fuel tank should be refuelled as soon as possible, with at least 4 litres (0.9 gallons) of fuel.

If the system protection function has activated, the vehicle must be refuelled, then restarted using the following procedure:

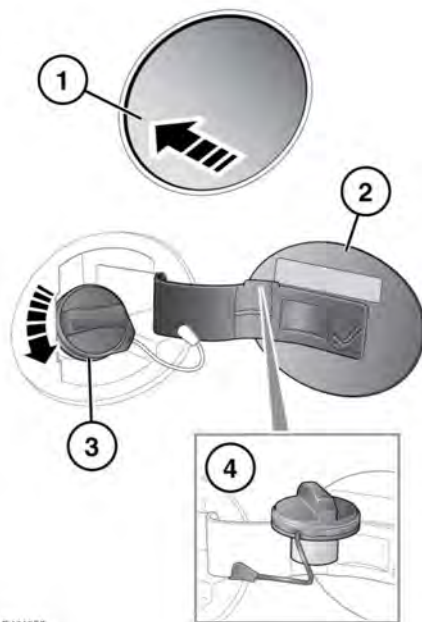
1. With the brake pedal pressed, press and hold the engine **START/STOP** button and crank the engine for 5 seconds.
2. Release the **START/STOP** button.
3. With the brake pedal pressed, press and release the **START/STOP** button to crank the engine. The engine should start within approximately 5 seconds.

Note: If the engine does not start, pause for 10 seconds with the ignition in Convenience mode, before repeating the procedure from the beginning.

- ❗ Do not crank the engine for longer than 30 seconds continuously.

FUEL FILLER FLAP

- ⚠ Take note of all the warnings and instructions given on the label affixed to the inside of the filler flap.



E 194357

The vehicle must be unlocked using the Smart key, before the filler flap can be opened.

1. Press and release the rear of the flap (in the area indicated) to unlatch.
2. Pull the flap open. The label on the inside of the flap indicates the correct fuel for the vehicle.
3. Twist the cap counter-clockwise to undo.
4. Stow the cap on the lip provided on the top of the hinge arm, as shown.