

# Fluid level checks

Make sure that the cap is tightened fully after top-up is completed, by turning the cap until the ratchet cap clicks.

## CHECKING THE BRAKE FLUID LEVEL

**⚠** Seek qualified assistance immediately if brake pedal travel is unusually long, unusually short, or if there is any significant loss of brake fluid. Driving under such conditions could result in extended stopping distances or complete brake failure.

**Note:** If the warning lamp illuminates or the message is displayed while the vehicle is being driven, stop the vehicle as soon as safety permits by gently applying the brakes. Check and top-up the fluid level, if necessary.

See **43, BRAKE (RED)**

**⚠** Brake fluid is highly toxic - keep containers sealed and out of the reach of children. If accidental consumption is suspected, seek medical attention immediately.

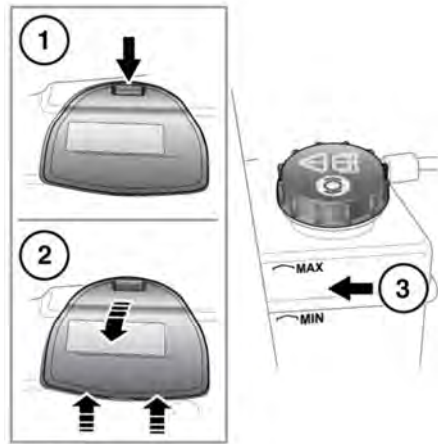
**⚠** If the fluid comes into contact with the skin or eyes, rinse immediately with plenty of clean water.

**⚠** Brake fluid is highly flammable. Do not allow brake fluid to come into contact with naked flames or other sources of ignition (e.g., a hot engine).

**⚠** Do not drive the vehicle with the fluid level below the **MIN** mark.

With the vehicle on level ground, check the fluid level at least every week (more frequently with high distance driving or arduous operating conditions).

The brake fluid reservoir is located beneath a cover on the raised platform, to the rear of the engine compartment. See **162, FLUID FILLER LOCATIONS**.



1. Release the catch and lift the cover forwards.
2. Pull the cover rearwards, to release the hinges.
3. The brake fluid level should be between the **MIN** and the **MAX** marks on the side of the reservoir.

The fluid level may drop slightly during normal use, as a result of brake pad wear, but should not be allowed to drop below the **MIN** mark.

## TOPPING UP THE BRAKE FLUID

**⚠** Brake fluid will damage painted surfaces. Soak up any spillage with an absorbent cloth immediately and wash the area with a mixture of car shampoo and water.

**⚠** Only use new fluid from an airtight container (fluid from open containers or fluid previously bled from the system, will have absorbed moisture, which will adversely affect performance and must not be used).