


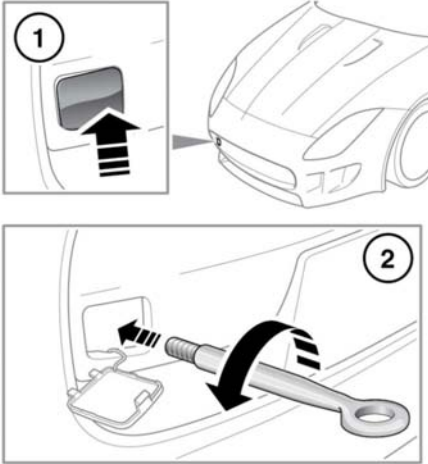
# Vehicle recovery

## TOWING EYES

 The towing eye at the front of the vehicle is designed for on-road recovery only.

 Do not tow the vehicle on all 4 wheels.

## ATTACHING THE FRONT TOWING EYE

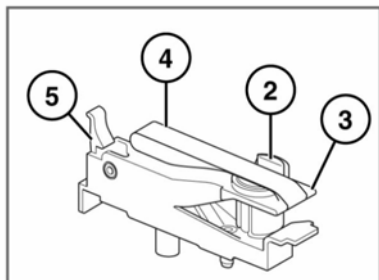


E150044

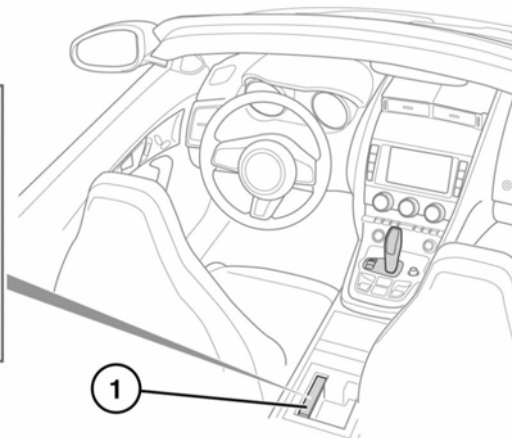
The front towing eye is located in the Luggage compartment, along the right side of the vehicle's battery. To access the front towing eye, remove the Luggage compartment left-side (battery) cover.

1. Pop out the access cover in the front bumper.
2. Locate the towing eye through the bumper and screw the towing eye counter-clockwise into its fixing, until secure.

## TRANSMISSION PARK RELEASE



E160096



**⚠ Make sure that the vehicle is secured with wheel chocks, apply the Electric Parking Brake (EPB), or firmly press the brake pedal. Failure to do so can result in unexpected movement of the vehicle, causing serious injury or death.**

- Return the operating lever to the horizontal position.
- Rotate the Transmission park release locking device 90° clockwise.
- Install the trim panel and close the cubby box.

When recovering your vehicle, it may be necessary to manually release the transmission from the Park (**P**) position to the Neutral (**N**) position. The Transmission park release is operated by a lever located in the cubby box, see **65, STORAGE COMPARTMENTS**.

To operate the Transmission park release:

1. Remove the left side trim panel.
2. Rotate the Transmission park release locking device 90° counter-clockwise.
3. Pull the operating lever until it is latched in the vertical position.

To re-engage the transmission park lock:

- Hold the strap on the operating lever (**4**), and release the latch (**5**).

## TRANSPORTING THE VEHICLE

- ⚠** Only use the lashing points or over-wheel lashings. Lashing over the body or suspension is not permissible as settling of the suspension will cause the lashing straps to slacken.

The recommended method for recovery/transportation of the vehicle, is on a transporter or trailer designed for that purpose.

Make sure that transportation is carried out by suitably qualified persons, and that the vehicle is secured correctly.

To allow the vehicle to roll freely, the transmission will need to be released from Park (**P**) via the use of the Transmission park release.

# Vehicle recovery



If possible, make sure that the Deployable Rear Spoiler (DRS) is in the fully stowed position.