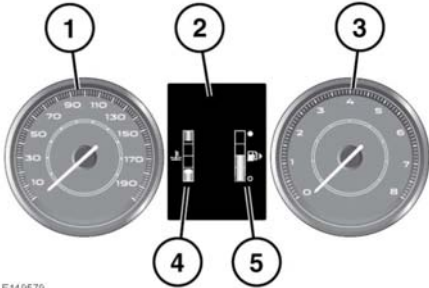


## INSTRUMENT PANEL



E149579

1. Speedometer.
2. Message centre.
3. Tachometer.
4. Temperature gauge.

**!** Serious engine damage can occur if the vehicle is driven while the engine is overheating.

If the pointer moves onto the red line, the engine is overheating. Stop the vehicle as soon as safety permits and allow the engine to idle until the temperature reduces. If, after several minutes, the temperature does not reduce, switch off the engine and allow it to cool. If the problem persists, seek qualified assistance immediately.

**Note:** If engine overheating occurs, there may be a noticeable reduction in engine power and the air conditioning may cease operation. This is a normal operating strategy, to reduce load on the engine and assist with engine cooling.

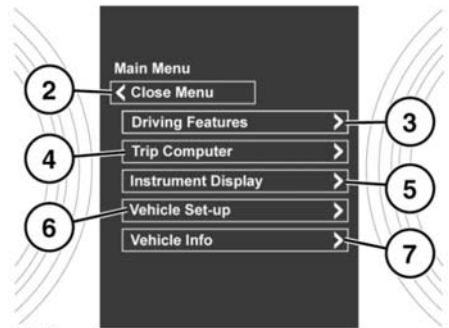
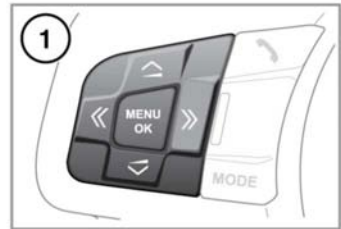
5. Fuel gauge.

**!** Never allow the engine to run out of fuel. The resultant misfire can seriously damage the catalytic converter.

If the **amber** low fuel warning lamp illuminates, the vehicle should be refuelled as soon as possible. The approximate distance that can be travelled on the remaining fuel can be viewed via the Trip computer range function.

As a reminder of the location of the fuel filler, there is an arrow head symbol, next to the fuel pump symbol, pointing to the relevant side of the vehicle.

## INSTRUMENT PANEL MENU



E161590

1. Steering wheel menu control.

- Press the **MENU OK** button to open the Instrument panel menu. When the menu is open, press the button to select the highlighted item.
- Press the up/down arrow to scroll up or down through a list.
- Press the right arrow to view a sub-list.

# Instrument panel

- Press the left arrow to return to the previous menu.
2. Close the Instrument panel menu.
  3. Access the **Driving Features** menu.
  4. Access the **Trip Computer** menu.
  5. Access the **Instrument Display** menu.
  6. Access the **Vehicle Set-up** menu.
  7. Access the vehicle's **Vehicle Info**. Only available with the ignition on and the engine not running.

## WARNING AND INFORMATION MESSAGES



**Do not ignore warning messages, take appropriate action as soon as possible. Failure to do so may result in serious damage to the vehicle.**

**If the message is suppressed, an amber or red warning icon will remain illuminated until the cause of the message is rectified.**

For information regarding the individual messages, their meanings, and any action required, please refer to the relevant section within this handbook.

If more than one message is active, each is displayed in turn for 2 seconds in order of priority.

**Note:** Messages are displayed in order of importance, with critical warning messages being the highest priority.

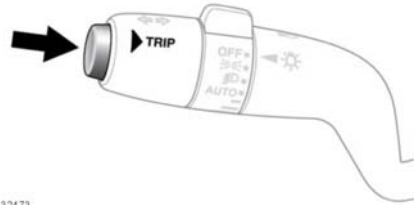
Warning messages may be accompanied by an audible warning, and the message text may have the handbook symbol next to it. Warning messages are displayed until the condition causing the fault is rectified or the message is suppressed using the **OK** button on the steering wheel. If the message is suppressed, a warning icon will remain illuminated until the cause of the message is rectified.

## TRIP COMPUTER

The computer memory stores data for a journey, or a series of journeys, until it is reset to zero. The displayed information is for guidance only, as it can be affected by traffic, road, and weather conditions.

There are 3 trip memories available, **A**, **B**, and **Auto**. You can specify which trip memory is viewable using the cluster menu.

## USING THE TRIP COMPUTER



E1132473

A short press (1 second or less), or a series of short presses, of the **TRIP** button will change the Trip computer display. The options available are:

- Odometer.
- Trip distance.
- Trip average speed.
- Trip average fuel consumption.
- Instantaneous (short term average) fuel consumption.
- Range available from remaining fuel.
- Blank display.

**Note:** Except for the Odometer and Blank display, the options above can be enabled/disabled via the Instrument panel menus, **Trip Computer** and **Trip Content**.

To reset the Trip computer values to zero, press and hold the **TRIP** button for 2 seconds.

To reset the fuel consumption value, press and hold the **TRIP** button until the display clears.

The distance, average speed, and average fuel economy values for trip A and trip B can be reset. Set the Trip computer display to show the trip that you wish to reset, then press and hold the **TRIP** button until the message **Resetting Trip** is displayed.

It is not possible to manually reset the Auto trip memory. This resets automatically each time the ignition is switched on.

Trips may be added together, to record a continuous journey, or removed. Press the **TRIP** button for longer than 1 second, when Auto trip memory values for distance, average speed, and average fuel economy are displayed, then **Adding Last Journey** or **Removing Last Journey** will appear on the screen. Press the **TRIP** button for longer than 1 second, and the previous trip information will be added to, or removed from, the current trip, and the new total will be displayed. There is no limit to the number of times this can be done before the ignition is switched off.

## TRIP DISTANCE

Distance travelled since the last memory reset. The maximum trip reading is 9999.9 (kilometres or miles). The computer will automatically reset to zero if this distance is exceeded.

## RANGE

This shows the predicted distance (kilometres or miles) that the vehicle should travel on the remaining fuel, assuming fuel consumption stays constant.

## METRIC/IMPERIAL/MIXED DISPLAY

The Trip computer readings can be changed between metric, imperial, and mixed units in the **Trip Computer** menu of the Message centre. See **35, INSTRUMENT PANEL MENU**.

***Note:** Temperature display can be changed between °C (Celsius) and °F (Fahrenheit) independently of metric or imperial units.*

## SERVICE INTERVAL INDICATOR

An upcoming service interval will be notified to the driver via the Message centre, as either a distance or time left until the service is due. Once the distance or time are exceeded, the display will show a negative value (-) to indicate that a service is overdue.

One or both types of service interval (distance and time) may be displayed.