



## LOCKING AND ARMING THE ALARM

 **Before exiting the vehicle, always make sure the transmission is in Park (P), the engine is turned off, the Parking brake is applied and the Smart key is removed from the vehicle.**


 Remove all Smart keys and emergency key blades from the vehicle when it is left unattended. This will help to prevent the alarm from being disarmed and, therefore; to help prevent theft.

**Note:** Before locking the vehicle, make sure that the bonnet, Luggage compartment, and all of the doors are fully closed.

### Single locking:

- Smart key: Press the lock button once, to lock the vehicle.
- Keyless locking: Press the deployed handle briefly to Single lock the vehicle.

**Note:** Make sure the Smart key is within 1 m (3 ft) of the door handle.

 The Smart key may not be detected if it is placed within a metal container or if it is shielded by a device with a back-lit LCD screen, such as a smart phone, laptop (including when inside a laptop bag), game console, etc.

**Note:** When Single locked, the hazard warning lamps will flash once to confirm. The handle of both doors will retract to the flush position.

**Note:** Single locking secures the vehicle and prevents the doors, fuel filler flap and the Luggage compartment being opened from outside of the vehicle. The doors **can** be unlocked and opened from inside the vehicle. It also activates the Perimeter alarm, see **17, PERIMETER ALARM**.

### Double Locking:

- Smart key: Press the lock button twice within 3 seconds to Double lock the vehicle.
- Keyless locking: Within 3 seconds of having Single locked the vehicle, briefly press the retracted door handle again.

**Note:** When Double locked, the hazard warning lamps will flash twice (with a long second flash) and an audible warning will sound as confirmation.



The audible warning can be enabled/disabled by a Dealer/Authorised Repairer.


**Note:** Double locking secures the vehicle and prevents the doors and the Luggage compartment from being opened from outside of the vehicle. The doors **cannot** be unlocked and opened from inside the vehicle. It also activates the Full alarm system. See **17, FULL ALARM**.

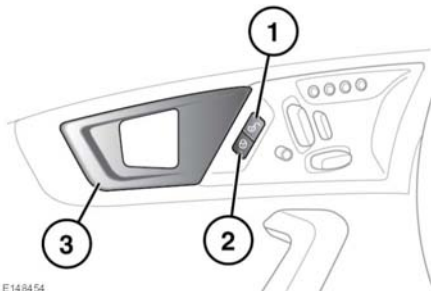


**Never Double lock the vehicle with people, children, or pets inside. In the event of an emergency they would be unable to escape, and the emergency services would be unable to release them quickly.**

# Exiting the vehicle

## DOOR LOCKS AND RELEASE LEVERS

 Park (P) should be engaged and the Parking brake applied when the vehicle is stationary. The vehicle can move unexpectedly with any other gear position selected.




1. Press the unlock button to unlock the vehicle.  
**Note:** Handles will automatically deploy on both doors.
2. Press the lock button to lock the vehicle.  
**Note:** Handles will automatically retract to the flush position on both doors.
3. Pull the release lever to open the door.  
**Note:** If the car was Single locked using the Smart key, then operating the release lever will only release that door and the alarm will sound. If the vehicle has been Double locked, the interior door release levers will not operate. The vehicle must be unlocked using the Smart key.

## SINGLE LOCKING

Press the lock button briefly. Single locking secures the vehicle and prevents the doors and the Luggage compartment from being opened from outside of the vehicle. The doors can be unlocked and opened from inside the vehicle. The hazard warning lamps will flash once as confirmation.

## DOUBLE LOCKING

 Never Double lock the vehicle with people, children, or pets inside. In the event of an emergency they would be unable to escape, and the emergency services would be unable to release them quickly.  
When the vehicle is Double locked, the doors cannot be opened, either from inside or outside of the vehicle.

Press the lock button twice within 3 seconds. Double locking secures the vehicle and prevents the doors and the Luggage compartment from being unlocked or opened from inside or outside of the vehicle, except with the correct Smart Key. The hazard warning lamps will flash twice (with a long second flash) and an audible warning will sound as confirmation.




The audible warning can be enabled/disabled by your Dealer/Authorised Repairer.

## MISLOCK

**Note:** Operating the interior or exterior door handles while attempting to unlock or lock the vehicle (including Drive-away locking) may cause the security system to ignore any unlock or lock requests.

If any of the doors, the bonnet, or the Luggage compartment are not shut fully when the vehicle is locked using the Smart key or by Keyless locking, the vehicle will not lock and 2 warning tones will sound. Check that all of the doors, the bonnet, and the Luggage compartment are closed properly and lock the vehicle again.

## GLOBAL CLOSING

 Make sure that no children, pets, or obstructions are in any open aperture before operating Global closing.

Make sure that both doors are closed, then press and hold the lock button on the Smart key for 3 seconds. The vehicle will Single lock and the alarm will be fully armed immediately. After 3 seconds, all open windows will close.

## PERIMETER ALARM



**No modifications or additions should be made to the alarm system. Such changes could cause the system to malfunction.**

The Perimeter alarm system is activated when the vehicle is Single locked. See **15, LOCKING AND ARMING THE ALARM**.

Once activated, the alarm system will sound if:

- The bonnet, Luggage compartment, or any door is opened.
- The vehicle's battery is disconnected.
- An attempt is made to disconnect the alarm siren.

## FULL ALARM

The Full alarm system is activated when the vehicle is Double locked. See **15, LOCKING AND ARMING THE ALARM**.

Once activated, the alarm system will sound if:

- The bonnet, Luggage compartment, or any door is opened.
- Movement is detected within the vehicle's interior.
- A window, windscreen, or rear screen are broken.
- The vehicle is raised or tilted.
- The vehicle's battery is disconnected.
- An attempt is made to disconnect the alarm system.

## BATTERY-BACKED SOUNDER

In certain markets, a separate Battery-backed sounder is fitted. This device will sound the alarm if the vehicle's battery or the alarm sounder is disconnected when the security system is armed.

## DEACTIVATING THE ALARM WHEN TRIGGERED

If the alarm has been triggered, it can be deactivated by any one of the following methods:

- Pressing the unlock button on the Smart key.
- Opening a door using Keyless entry.
- Pressing the START/STOP button with a valid Smart key present.

## TILT SENSOR

The Tilt sensor detects any change in the vehicle's angle to the ground. When the alarm is armed and the vehicle is Double locked, any change in the vehicle's angle will activate the Tilt alarm.

**Note:** *The Tilt sensors can be temporarily disabled, for the next time the vehicle is locked, via the **Vehicle Set-up** of the Instrument panel menu. See **35, INSTRUMENT PANEL MENU**.*

## PASSIVE ARMING

This vehicle is fitted with a Passive arming feature which can, if enabled, automatically arm the Anti-theft system. Passive arming will automatically arm the Perimeter alarm system 60 seconds after the driver's door is closed, provided that all of the doors, the bonnet and the Luggage compartment are closed, the ignition is switched off, and there are no valid Smart keys inside the vehicle.

# Exiting the vehicle

Passive arming will not lock the vehicle, although access to the Luggage compartment via the interior or exterior release buttons will be prevented and the fuel filler flap will be locked.



Passive arming can be enabled/disabled by a Dealer/Authorised Repairer.

## AUTOMATIC RELOCKING AND RE-ARMING OF THE ALARM

Automatic relock and re-arm is a feature which, if enabled, automatically relocks the vehicle and arms the Anti-theft system.

If the vehicle is in a locked and armed state, the remote unlock button is pressed, but none of the doors or the Luggage compartment are opened within 40 seconds, the vehicle will automatically relock all of the doors and the Luggage compartment, and will re-arm the alarm system.

**Note:** Automatic relocking and arming will only relock and arm to the last locked and armed state.

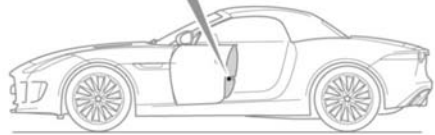
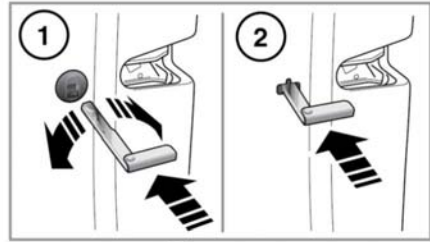


Automatic relocking and re-arming can be enabled/disabled by your Dealer/Authorised Repairer.

## SENSOR FAULTS

If the security systems detect a fault with one of the security sensors, an error tone will sound from the alarm after the vehicle is unlocked and disarmed. If this condition occurs, seek assistance from a Dealer/Authorised Repairer for rectification.

## EMERGENCY LOCKING



E148384

In the event of the battery discharging or a fault with the Keyless locking system, the doors must be locked manually.

**Note:** Do not leave the emergency key blade in the vehicle at any point during the emergency locking procedure.

1. Open the door and locate the emergency lock access cover. Using the emergency key blade, see **6, UNLOCKING THE VEHICLE**, rotate the cover to release it from the door. Remove the cover and store it safely.
2. Insert the emergency key blade firmly into the emergency lock. The emergency key blade can now be removed.
3. Refit the emergency lock access cover and rotate it clockwise to secure it firmly.
4. Close the door and check to make sure that the door is locked. Repeat the procedure for the other unlocked door.