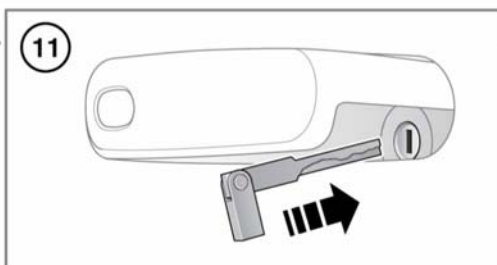
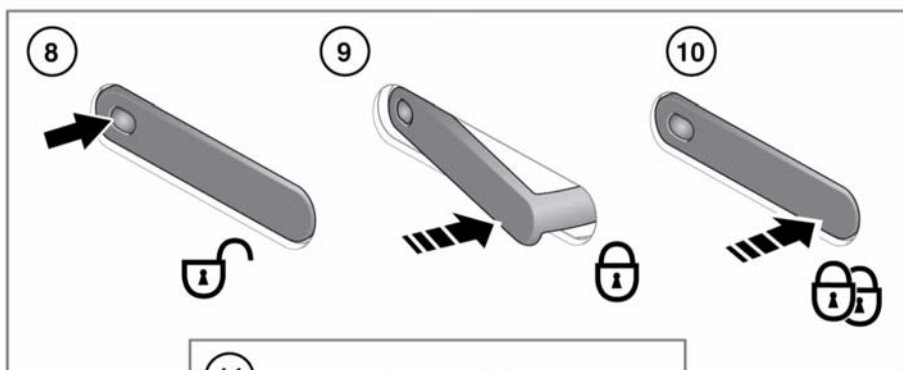
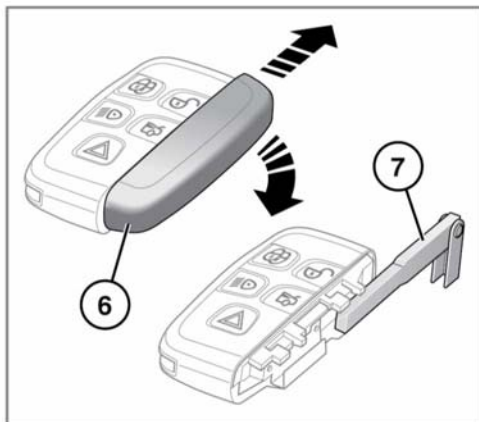
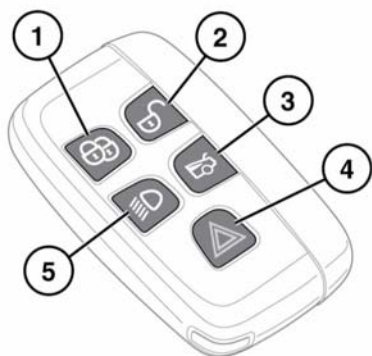


Entering the vehicle

UNLOCKING THE VEHICLE



E159573



Any person fitted with an implanted medical device should make sure that the device is kept at a distance of at least 23 cm (9 ins) away from any transmitter mounted in the vehicle, see 206, SMART KEY TRANSMITTER LOCATIONS. This is to avoid any possibility of interference between the system and device. Interference may cause the implanted medical device to malfunction, causing serious injury or death.



To prevent accidental or unauthorised operation, never leave children or animals unattended in the vehicle. The vehicle can be operated when the Smart key is inside the vehicle.

1. Lock: Press to secure the vehicle.

Note: Handles will automatically retract to the flush position on both doors.

The vehicle can be Single or Double locked. See **15, LOCKING AND ARMING THE ALARM.**

2. Unlock:

Note: Handles will automatically deploy on all unlocked doors.

The vehicle can be unlocked using either Single or Multi-point entry.

When Single-point entry is enabled, the first press unlocks the driver's door and enables the other door to be opened from the inside. The hazard warning lamps will flash twice to indicate that the vehicle is unlocked and the alarm has been disarmed. A second press unlocks the passenger door and the Luggage compartment.

If Multi-point entry is enabled, press briefly to unlock all of the doors and the Luggage compartment, and to disarm the alarm. The hazard warning lamps will flash twice to indicate that the vehicle is unlocked and the alarm has been disarmed.

To change from Single to Multi-point entry (or vice versa), press both the lock and unlock buttons simultaneously for 3 seconds. The hazard warning lamps will flash twice to confirm the change.

The change can also be achieved using the Instrument panel menu. See **35, INSTRUMENT PANEL MENU.**

3. Press to open the Luggage compartment. The vehicle's security system will remain active for the period that the Luggage compartment is open, but the intrusion and inclination sensing systems will be inhibited. Door and bonnet security will remain active. The security system will re-arm to its previous state when the Luggage compartment is closed.
4. Panic alarm: Press and hold for 3 seconds, or press 3 times within 3 seconds, to activate the horn, siren, and hazard lamps. After 5 seconds, the alarm can be cancelled by pressing the panic alarm button for 3 seconds or by pressing the button three times within 3 seconds. The emergency alarm will also be cancelled if the vehicle detects a valid Smart key when the START/STOP button is pressed.
5. Press to switch on the approach illumination for up to 120 seconds. The illumination time is set using the exit delay switch. Pressing the button again or operating the START/STOP button will turn the approach lamps off.
6. Emergency key access: Slide up the side cover to release, then tilt away from the Smart key body to remove.
7. Remove the emergency key blade and unfold.
8. Keyless unlock, see **8, KEYLESS ENTRY:** Press to unlock the vehicle. The door handle will deploy.

Entering the vehicle

Note: Handle in the retracted flush position indicates a locked door.

9. Keyless Single lock: Press the rear of the door handle to Single lock the vehicle. The door handle will retract to the flush position.

Note: Handle in the deployed position indicates an unlocked door.

10. Keyless Double lock: Press again within 3 seconds of Single locking to Double lock the vehicle.
11. Emergency door unlock: If the Smart key and Keyless entry fail to open the vehicle, insert the key blade into the slot behind the driver's door handle. Pull and hold the handle for access.

- To unlock, turn the key blade towards the front of the vehicle and release.

Note: If the security system is disarmed, all doors of the and the Luggage compartment will be unlocked. If the security system is armed, only the driver's door will unlock.

Note: If the vehicle is unlocked using the emergency key blade with the security system armed, the alarm will sound when a door is unlocked. To deactivate the alarm, press the unlock button on the Smart key or press the engine START/STOP button with the Smart key inside the vehicle.

- To lock, turn the key blade towards the rear of the vehicle and release.

Note: This will lock all of the doors, but will not arm the alarm.

Instructional video - Deployable door handle.



E151781

Instructional video - Emergency entry.



E151782

SINGLE/MULTI-POINT ENTRY

When you press the unlock button, your vehicle will unlock in one of two ways:

1. Single-point entry: Unlocks the driver's door and the fuel filler only. A second press is required to unlock the remaining doors and the tailgate.
2. Multi-point entry: Unlocks all of the doors, the fuel filler flap, and the tailgate on the first press.

To change from Single to Multi-point entry (or vice versa), press both the lock and unlock buttons simultaneously for 3 seconds. The hazard warning lamps will flash twice to confirm the change.

This feature may also be set via the **Vehicle Set-Up** menu. See **35, INSTRUMENT PANEL MENU**.

Note: If, when the vehicle is unlocked, an audible warning is emitted, this will be a 'mislock' error. There may be a fault with either of the alarm sensors. Consult with your Dealer/Authorised Repairer as soon as possible.

KEYLESS ENTRY



If a Smart key is lost, a replacement can be obtained and reprogrammed to the vehicle by a Dealer/Authorised Repairer. Notify a Dealer/Authorised Repairer as soon as a Smart key is lost or stolen and have the remaining Smart key(s) reprogrammed.

Keyless entry allows the vehicle to be unlocked and disarmed by simply operating the door handle, provided the Smart key is within 1 metre (3 feet).

The Smart key needs only to be on the driver's person; it does not need to be exposed or handled. However, the Smart key may not be detected if it is placed within a metal container, or is shielded by a device with a back-lit LCD screen such as a smart phone, laptop (including when inside a laptop bag), game console, etc. Keep the Smart key clear of such devices when attempting Keyless entry or Keyless starting.

Note: *Keyless entry will unlock the vehicle in accordance with the current security setting (Single-point or Multi-point entry). However, if Single-point entry is the current setting and a door other than the driver's door is opened first, all doors will unlock.*

When all open doors have been closed, the system will search the vehicle's interior for a valid Smart key. If one is not detected, **SMART KEY NOT FOUND REFER TO HANDBOOK** will be displayed in the Message centre. See **74, KEYLESS START BACKUP**.

The security system fitted to your vehicle is Thatcham category 1 approved, and meets EU regulations 97/116 and EU directive 95/56 EC.

Instructional video - Keyless entry and Keyless locking.



E151509

GLOBAL OPENING

Press and hold the unlock button for 3 seconds. The vehicle will unlock and the alarm will be disarmed immediately. After 3 seconds, both of the windows will open. This feature can be enabled/disabled via the Instrument panel menu.

To stop the windows from opening/closing during the Global opening/closing operation, press any of the buttons on the Smart key or operate the driver's window switch. To stop a particular window from opening, operate the relevant window switch. For Global closing. See **16, GLOBAL CLOSING**.

DRIVE-AWAY LOCKING

Locks both of the doors and retracts both deployed door handles, when the vehicle exceeds a predetermined limit, set via the **Vehicle Set-up** menu from the Instrument panel menu list. See **35, INSTRUMENT PANEL MENU**.

Note: *Drive-away locking can be enabled/disabled via the **Vehicle Set-up** menu from the Instrument panel menu list. If disabled, the deployed handles will retract when the vehicle reaches a speed of 8 km/h (5 mph).*

Use of the central locking/unlocking buttons will override the Drive-away locking feature for the rest of a journey. See **234, DRIVER CONTROLS**.

If a door is individually unlocked and opened, both of the doors will relock when the open door is subsequently closed.

STEERING COLUMN LOCK



Your vehicle is fitted with an electronic steering column lock. The column unlocks when a Smart key is detected inside the vehicle.

If any malfunction of the steering column lock occurs, **STEERING COLUMN LOCKED** will be displayed in the Message centre. If this occurs:

Entering the vehicle

1. Lock and then unlock the vehicle using the Smart key.
2. Try again to unlock the steering column lock, by turning the steering wheel gently to the left and right whilst locking and then unlocking the vehicle using the Smart key.
3. If the problem persists, seek qualified assistance immediately.

OPENING AND CLOSING THE LUGGAGE COMPARTMENT

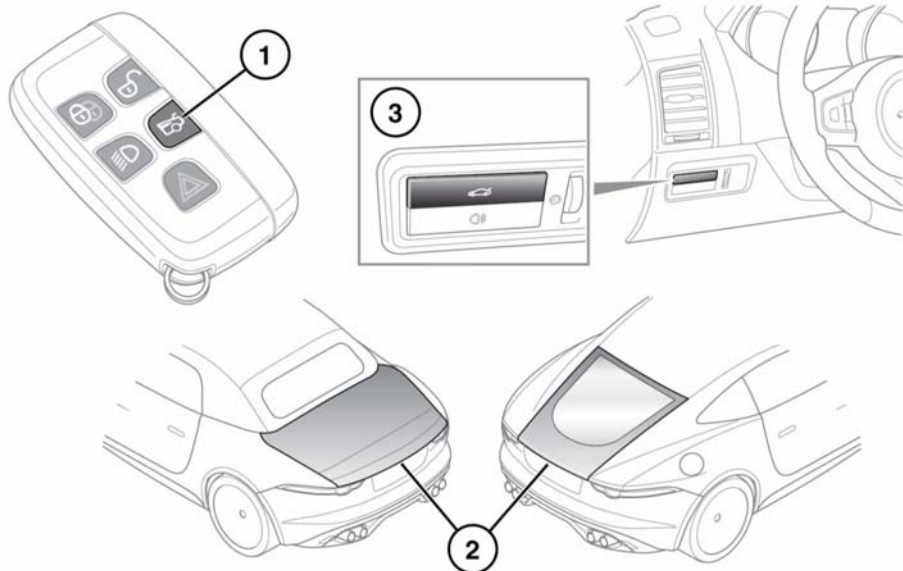
-  If the Luggage compartment is opened after the driver and passenger doors are locked, make sure that the Smart key remains outside of the vehicle when it is closed again.
-  If the Smart key is inadvertently left inside the Luggage compartment and the vehicle is locked and alarmed, a warning sounds and the compartment will re-open after 3 seconds.



The Smart key may not be detected if it is placed within a metal container, or if it is shielded by a device with a back-lit LCD screen such as a smart phone, laptop (including in a laptop bag), game console, etc.



Do not repeatedly attempt to close the Luggage compartment after it automatically re-opens, or the latch may overheat. If the cause of the automatic re-opening cannot be determined: Unlock all of the doors and the Luggage compartment with the Smart key, and make sure that all of the doors, the bonnet, and the Luggage compartment are closed properly; and then lock the vehicle again with the Smart key.



E159263

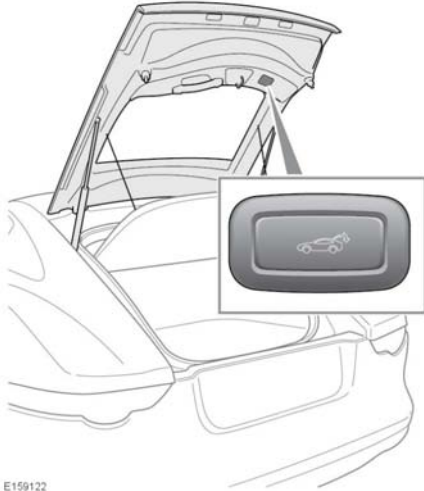
To open the Luggage compartment:

1. Press the Smart key button.
2. Press the exterior release button if the vehicle is not locked.
3. Press the interior release button.

Note: Pressing the interior release button again, on Coupe vehicles with a powered tailgate, will also close the tailgate. See **12, OPENING AND CLOSING THE POWERED TAILGATE.**

Entering the vehicle

OPENING AND CLOSING THE POWERED TAILGATE



E159122

- ⚠ Make sure there is a minimum space of 1.0 m (39 in) above the rear of the vehicle before operating the tailgate. Insufficient space may result in damage to the vehicle.
- ⚠ Do not operate the tailgate if a cycle rack is fitted to the tailgate. Remove any cycles and/or racks before operating the tailgate.
- Press the button arrowed to open the Powered tailgate.
- Press and release to close the Powered tailgate.

The tailgate can also be opened and closed by pressing the luggage compartment interior release button and also opened with the Smart key. See **10, OPENING AND CLOSING THE LUGGAGE COMPARTMENT.**

Note: The tailgate will not open if the vehicle is travelling at, or above, approximately 5 km/h (3 mph).

Note: When using the external release button (2), all of the doors must be unlocked and the transmission engaged in Park (P).

Note: If the Smart key is inadvertently left inside the Luggage compartment and the vehicle is locked and the alarm set, an audible warning will sound and the tailgate will re-open after 3 seconds.

After the tailgate has opened, it can be manually lowered. If the tailgate fails to open or close correctly, close it manually, then press the tailgate button again.

Note: If a tailgate button is pressed while the tailgate is opening or closing, all movement will stop. However, if a button is pressed during the automatic locking stage, an open request will be ignored.




Before operating the tailgate, make sure that anyone in the vicinity does not have any part of their body in a position where it could be trapped. Note that the automatic locking action does not incorporate object detection. Death or serious injury could occur, even with an object detection system. While the tailgate is open, the locking platform and latch are exposed. Do not manually close the latch as it may also automatically lock and trap items or body parts.

Object detection while opening: If an object is detected that would interfere with the tailgate opening, tailgate movement will stop. Remove any obstructions and press the tailgate button again to open.

Object detection while closing: If an object is detected that would interfere with the tailgate closing, tailgate movement will stop and then reverse a short distance. An audible warning will be given to indicate a mislock. Remove any obstructions and press the tailgate button again to close.

REMOTE KEY FOB CARE

 **To prevent accidental operation, which may result in an injury, never leave the Smart key in the vehicle if children or animals are also left in the vehicle.**

 Do not expose to extremes of heat, dust, humidity, or allow contact with fluids. Do not leave the transmitter exposed to direct sunlight.

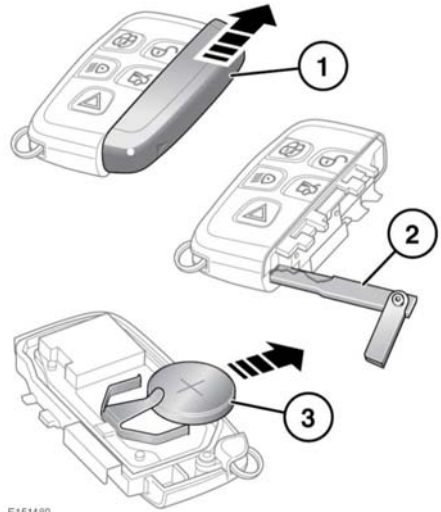
The emergency key blade number is recorded on an attached label, which should be peeled off and affixed to the correct area in the Service Portfolio, supplied in the literature pack. Keep the Service Portfolio safe, but not in the vehicle.

The operational range of the Smart key will vary considerably depending on atmospheric conditions and interference from other transmitting devices.

Note: The Radio Frequency (RF) used by the Smart key may be used by other devices (e.g., medical equipment). This may prevent the Smart key from operating correctly.

REMOTE KEY FOB BATTERY REPLACEMENT

When the battery needs replacing, there will be a significant decrease in the effective range and the message **SMART KEY BATTERY LOW** is displayed in the Message centre.



E151480

To replace the battery:

1. Slide the cover in the direction of the arrow until a click is heard. Remove the cover.
2. Use the emergency key blade to separate the Smart key body.
3. Fit a new CR2032 type battery (available from a Dealer/Authorised Repairer), with the positive (+) side upwards.

Note: Handle a new battery with the outer edge. Avoid touching the top and bottom faces of the new battery, as moisture/oil from your fingers can reduce battery life and corrode the contacts. If skin contact is made, clean with a lint-free cloth.

Entering the vehicle

Refit the parts in the reverse order, making sure that they click securely into place.



Battery disposal: Used batteries must be disposed of correctly, as they contain harmful substances. Seek advice on disposal from a Dealer/Authorised Repairer and/or a local authority.

Instructional video - Changing the Smart key battery.



E151796