





IMPORTANT INFORMATION

 Do not rest your foot on the brake pedal while the vehicle is in motion.


 Never allow the vehicle to coast (freewheel) with the engine turned off. The engine must be running to provide full braking assistance. The brakes will still function with the engine off, but far more pressure will be required to operate them.

 If the red brake warning lamp illuminates, safely bring the vehicle to a stop, as quickly as possible and seek qualified assistance. See 38, BRAKE (RED).

 If the yellow brake warning lamp illuminates, drive with care, avoiding heavy brake application and seek qualified assistance. See 39, BRAKE (YELLOW).

 Never place non-approved floor matting or any other obstructions under the pedals. This restricts pedal travel and braking efficiency.

 Additional brake pedal force may be required in wet conditions.

 On vehicles with carbon ceramic brakes, it is recommended that the brake fluid is replaced prior to using the vehicle on closed roads. It is also recommended that the brake fluid is replaced after driving the vehicle on closed roads.

 Only use the recommended brake fluid. See 201, LUBRICANTS AND FLUIDS.

Note: Operating noise levels of carbon ceramic brake discs can be higher than those associated with iron brake discs.

Note: Brake disc and pad wear will increase if aggressive braking techniques are employed.

Note: On vehicles with carbon ceramic brakes, the brake fluid requires replacing every 2 years regardless of distance, and not every 3 years as stated in your Service Portfolio.

Driving through heavy rain or water can have an adverse effect on braking efficiency. Under such circumstances, it is recommended that you lightly apply the brakes intermittently, to dry the brakes.

EMERGENCY BRAKE ASSIST (EBA)

If the driver rapidly applies the brakes, EBA automatically boosts the braking force to its maximum, in order to bring the vehicle to a halt as quickly as possible.

EBA stops operating as soon as the brake pedal is released.

A fault with the EBA system is indicated by the brake warning lamp (see 38, BRAKE (RED)) illuminating and a warning message displayed in the Message centre. Drive with care, avoiding heavy brake application and seek qualified assistance.

ELECTRONIC BRAKE FORCE DISTRIBUTION (EBD)

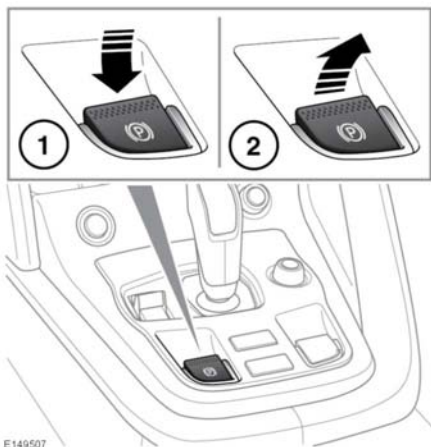
EBD controls the balance of braking forces supplied to the front and rear wheels, in order to maintain maximum braking efficiency.

If the vehicle has a light load (only the driver in the vehicle, for example), EBD will reduce the braking force applied to the rear wheels. If the vehicle is heavily laden, EBD will allow greater braking force to the rear wheels.

A fault with the EBD system is indicated by the brake warning lamp (see 38, BRAKE (RED)) illuminating and an associated warning message. Gently and safely stop the vehicle and seek qualified assistance.

ELECTRIC PARKING BRAKE (EPB)

- ❗ The Parking brakes operate on the rear wheels; therefore, secure parking of the vehicle is dependent on being on a hard and stable surface.
- ❗ Do not rely on the Parking brake to operate effectively, if the rear wheels have been immersed in mud or water.



With the ignition switched on, press the brake pedal and press down on the EPB switch (1). This will release the Parking brake.

With the vehicle stationary, press the brake pedal and pull up the EPB switch (2). This will apply the Parking brake. A warning lamp (see **39, PARKING BRAKE (RED)**) illuminates to indicate that the Parking brake is applied.

If the EPB switch is operated when the vehicle's speed is less than 3 km/h (2 mph), the vehicle will be brought to an abrupt stop. The stop lamps will not be illuminated.

- ❗ Driving the vehicle with the Parking brake applied, or repeated use of the Parking brake to slow the vehicle, may cause serious damage to the brake system.

In an emergency, with the vehicle travelling at more than 3 km/h (2 mph), pulling on the EPB switch and holding gives a gradual reduction in the speed. The brake warning lamp will illuminate accompanied by a warning tone and a warning message in the Message centre. The stop lamps will illuminate.

If the vehicle is stationary with the EPB applied and the transmission in **P**, selecting **D**, **N**, or **R** will release the EPB and allow the vehicle to move off. See **78, AUTOMATIC TRANSMISSION**.

Note: Automatic release of the EPB is only possible when the driver's door is closed or the driver's seat belt is buckled.

If the system detects a fault with the EPB, the **amber** brake warning lamp will illuminate accompanied by a message in the Message centre.

If the system detects a fault while the EPB is operating, the red Parking brake warning lamp will flash, accompanied by a message in the Message centre.

Note: The red Parking brake warning lamp will continue to be illuminated for at least 10 seconds after the ignition has been turned off.