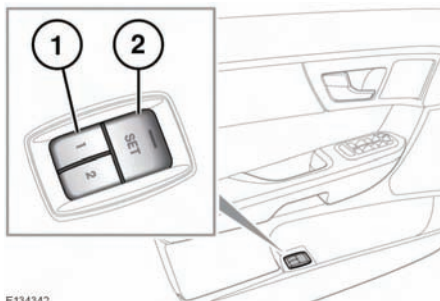


DRIVING POSITION MEMORY



E134342

1. Memory presets.
2. Memory set button.

Once you have adjusted the driver's seat, steering column (see **27, ADJUSTING THE STEERING WHEEL**) and exterior mirrors (see **51, EXTERIOR MIRRORS**), the vehicle can memorise these settings using the driver memory buttons.

Once the passenger seat has been adjusted as desired, these settings can be memorised using the passenger memory buttons.

1. Press the memory set button to activate the memory function.
2. Press one of the preset buttons within 5 seconds to memorise the current settings. For the driver's settings, **MEMORY 1 (or 2) SETTINGS SAVED** will be displayed on the Message centre accompanied by an audible chime to confirm the settings have been memorised.

A seat position can only be memorised during the 5 second period.

Any existing settings for a memory preset will be over-written when programming a memory position.

RECALLING A MEMORISED POSITION

Press the appropriate memory preset button (for the driver's settings, **MEMORY 1 (or 2) SETTINGS RECALLED** will be displayed in the Message centre).

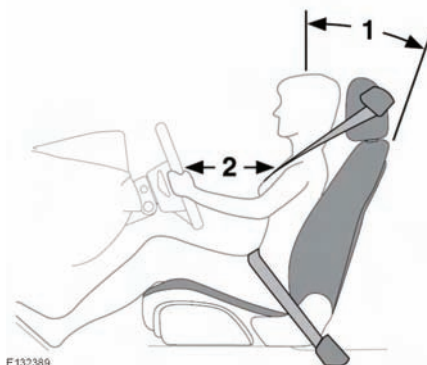
SITTING IN THE CORRECT POSITION



The driver and front passenger must not ride with the seat fully reclined.



Do not adjust the seat while the vehicle is moving.



E132389

The seat, head restraint, seat belt and airbags, work together as a system to enhance occupant protection. Correct use of these components will give greater protection, therefore the following points should be observed:

1. Sit in an upright position with the base of the spine as far back as possible. To achieve optimum benefit of the seat belt in the event of an accident, do not recline the seat excessively.