

To stop window movement during global opening when using the Smart key, press any of the buttons on the Smart key or operate the driver's window switch. To stop a particular window from opening, operate the relevant window switch.

**Note:** Global opening can be enabled/disabled via the **Windows/mirrors** menu, from the **Vehicle settings** menu on the touch screen. See **66, VEHICLE SETTINGS**.

## DRIVE-AWAY LOCKING

Locks all the doors when the vehicle exceeds a set speed. Use of the central locking/unlocking buttons, will override the Drive-away locking feature for the rest of a journey. See **230, DRIVER CONTROLS**.

If a door is individually unlocked and opened, all the doors will relock when the open door is subsequently closed.

**Note:** Drive-away locking and the speed at which it activates can be enabled/disabled via the **Security** menu, from the **Vehicle settings** menu on the touch screen. See **66, VEHICLE SETTINGS**.

## STEERING COLUMN LOCK

Your vehicle is fitted with an electronic steering column lock. The column unlocks when a Smart key is detected inside the vehicle.

If any malfunction of the steering column lock occurs, **STEERING COLUMN LOCKED** will be displayed in the Message centre. If this occurs:

1. Lock and then unlock the vehicle using the Smart key.
2. Try again to unlock the steering column lock, by turning the steering wheel gently to the left and right while locking and then unlocking the vehicle using the Smart key.
3. If the problem persists, seek qualified assistance immediately.

## OPENING AND CLOSING THE LUGGAGE COMPARTMENT



If the luggage compartment is opened after the driver and passenger doors are locked, make sure that the Smart key remains outside the vehicle when it is closed again.



If the Smart key is inadvertently left inside the luggage compartment and the vehicle is locked and alarmed, a warning sounds and the compartment will re-open after 3 seconds.

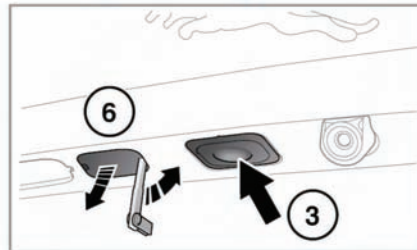
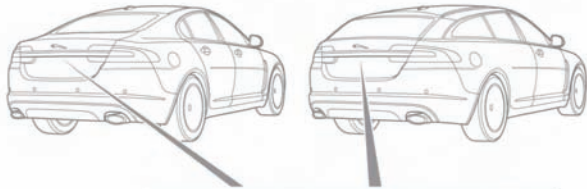
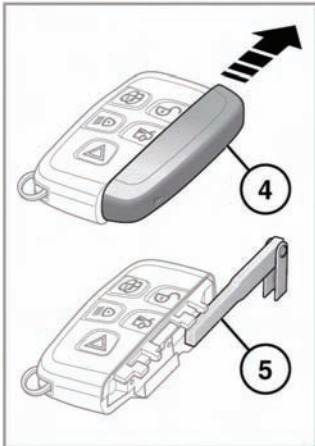
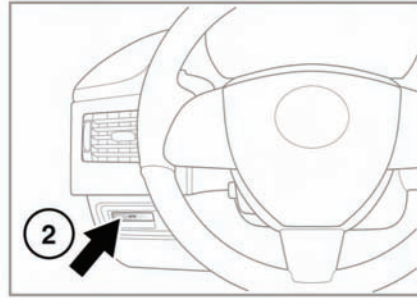


The Smart key may not be detected if it is placed within a metal container or if it is shielded by a device with a back-lit LCD screen, such as a smart phone, laptop (including in a laptop bag), games console etc.



Do not repeatedly attempt to close the luggage compartment after it automatically re-opens, or the latch may overheat. If the cause of the automatic re-opening cannot be determined: Unlock all the doors and the luggage compartment with the Smart key; and make sure that all the doors, the bonnet and the luggage compartment are closed properly; and then lock the vehicle again with the Smart key.

# Entering the vehicle



To open the luggage compartment or tailgate:

1. Press the Smart key button.
2. Press the interior release button.
3. Press the exterior release button if the vehicle is not locked.
4. To open the luggage compartment or tailgate with the emergency key blade, first hold the Smart key then slide and remove the cover to expose the emergency key.
5. Remove the emergency key blade.

6. Use the blade to remove the cap from the trim panel above the license plate. Insert the emergency key blade into the lock and turn clockwise to open the luggage compartment.

If the security system is armed, the alarm will sound when the luggage compartment is opened. To deactivate the alarm, press the vehicle unlock button on the Smart key or press the engine START/STOP button with the Smart key inside the vehicle.

The Sportbrake luggage area roller blind can lift and close with the tailgate movement.