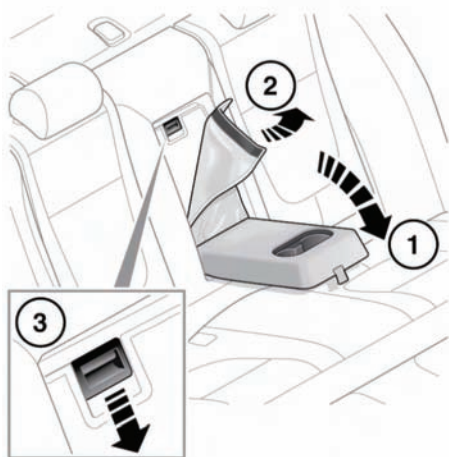
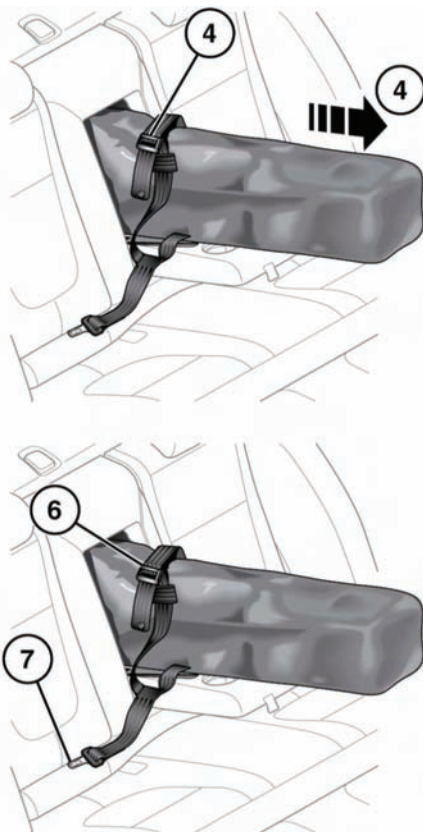


Rear seats

SKI HATCH



1. Fold down the arm rest.
2. Pull the leather flap forward.
3. Press the catch down to release the inner hatch door and lower onto the arm rest.
4. Pull the ski bag from the hatch into the vehicle and loosen the retaining strap.
5. From the luggage compartment, press the catch down to release the outer hatch door.
6. Push the skis through the hatch into the ski bag. Secure the skis by tightening the ski bag retaining strap.



7. Clip the strap connector into the centre rear seat belt buckle.