

To reset the opening height to maximum, repeat the process, but manually move it to the fully open position before pressing and holding the button.

The powered tailgate may lose its position memory if there are multiple object detections or if battery voltage is low. Powered operation may be inhibited. To reset the tailgate:

1. Manually close the tailgate.
2. Press a tailgate release button.
3. Allow the tailgate to power fully open or to the previously set position.
4. Press and release the close button.
5. Allow the tailgate to power close fully.

The tailgate programmed position memory will now be restored.

## REMOTE KEY FOB CARE



**To prevent accidental operation, never leave the Smart key in the vehicle if children or animals are also left in the vehicle.**



Do not expose to extremes of heat, dust, humidity or fluids. Do not leave the transmitter exposed to direct sunlight.

The emergency key blade number is recorded on an attached label, which should be peeled off and affixed to the correct area in the Service Record, supplied in the literature pack. Keep the Service Record safe, but not in the vehicle.

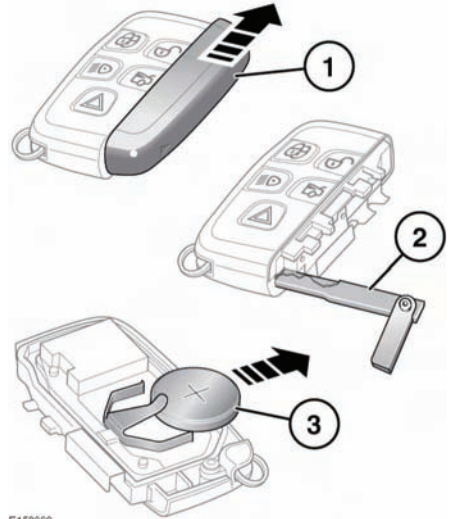
The operational range of the Smart key varies considerably, depending on atmospheric conditions and interference from other devices.

**Note:** The radio frequency used by the Smart key may be used by other devices (e.g. medical equipment). This may prevent the Smart key from operating correctly.

## REMOTE KEY FOB BATTERY REPLACEMENT

When the battery needs replacing, there will be a significant decrease in the effective range and the message **SMART KEY BATTERY LOW** is displayed in the Message centre.

To replace the battery:



E150890

1. Slide the cover in the direction of the arrow until a click is heard. Remove the cover.
2. Use the emergency key blade to separate the Smart key body.
3. Fit a new CR2032 type battery (available from a Dealer/Authorised Repairer), with the positive (+) side upwards.

**Note:** Use only a new unused battery when replacing the used battery.

**Note:** Avoid touching the new battery, as moisture/oil from your fingers can reduce battery life and corrode the contacts.

Refit the parts in the reverse order, making sure that they click securely into place.

# Entering the vehicle



Battery disposal: Used batteries must be disposed of correctly, as they contain harmful substances.

Seek advice on disposal from a Dealer/Authorised Repairer and/or a local authority.