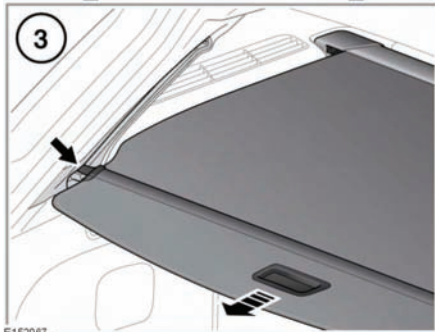
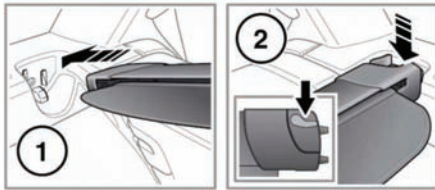


## LUGGAGE COMPARTMENT COVER

The Sportbrake luggage area cover can lift and close with the tailgate movement. The whole assembly can be fitted or removed as required.



**Never place objects on top of the cover. During an accident or sudden manoeuvre, loose objects can cause serious injury or death.**



1. With the tailgate open and the rear seats folded forward, engage the left end of the assembly into the moulded recess in the left side of the loadspace.

2. Lower the right end of the assembly into the right side recess. Turn the lever and push the assembly down into position. Release the lever. Make sure that the assembly has clicked into position and that the lever has returned to its original position. To remove the assembly the locking lever must first be turned.
3. Pull the spring loaded cover out of the assembly housing. Locate the left and right side pegs into the lower end of the side runners just inside the tailgate opening. Slide them up until the spring mechanism pulls the cover into position.

When the tailgate is opened, the cover can be partially retracted up the side runners or fully retracted into the assembly housing.

**Note:** It may be easier to fit/remove the cover if the rear seat backs have been folded forward.

**Note:** Removal of the cover is the reverse of fitting procedure.



**Do not store the cover loose in the vehicle. During an accident or sudden manoeuvre, the cover could cause serious injury or death.**

E152087