



Fluid level checks


Ensure the cap is tightened fully after top-up is completed by turning the cap until the ratchet cap clicks.


CHECKING THE BRAKE FLUID LEVEL


 **Seek qualified assistance immediately if brake pedal travel is unusually long, unusually short or if there is any significant loss of brake fluid. Driving under such conditions could result in extended stopping distances or complete brake failure.**

 If the quantity of fluid in the brake reservoir drops below the recommended level, a red warning lamp in the instrument panel will illuminate and the message Brake Fluid Low will be displayed in the Message centre.

Note: *If the warning lamp illuminates or the message is displayed while the vehicle is being driven, stop the vehicle as soon as safety permits by gently applying the brakes. Check and top-up the fluid level if necessary.*

 **Brake fluid is highly toxic - keep containers sealed and out of the reach of children. If accidental consumption is suspected, seek medical attention immediately.**

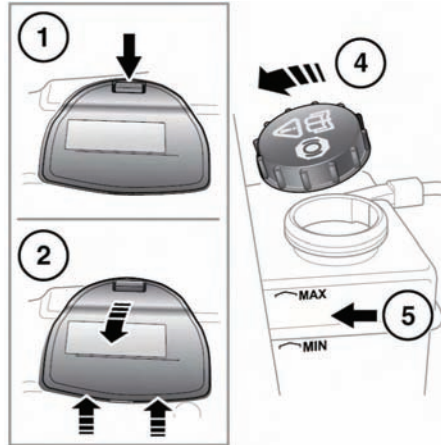
 **If the fluid comes into contact with the skin or eyes, rinse immediately with plenty of water.**

 **Brake fluid is highly inflammable. Do not allow brake fluid to come into contact with naked flames or other sources of ignition (e.g. a hot engine).**

 **Do not drive the vehicle with the fluid level below the MIN mark.**

With the vehicle on level ground, check the fluid level at least every week (more frequently in high mileage or arduous operating conditions).

The brake fluid reservoir is located beneath a cover on the raised platform to the rear of the engine compartment. See **155, ENGINE COMPARTMENT OVERVIEW**.




E134348

1. Release the catch and lift the cover forwards.
2. Pull the cover rearwards, to release the hinges.
3. Clean the filler cap with a clean, dry cloth before removing, to prevent dirt or moisture from entering the reservoir.
4. Remove the filler cap.
5. The brake fluid level should be between the **MIN** and the **MAX** marks on the side of the reservoir.

The fluid level may drop slightly during normal use, as a result of brake pad wear, but should not be allowed to drop below the **MIN** mark.

TOPPING UP THE BRAKE FLUID

 Brake fluid will damage painted surfaces. Soak up any spillage with an absorbent cloth immediately and wash the area with a mixture of car shampoo and water.