

PARTS AND ACCESSORIES



Do not fit non-approved parts and accessories or carry out non-approved alterations or conversions.



Your vehicle is not designed for use with a roof rack. Do not fit a roof rack to the vehicle, as damage may result.

AIRBAG SYSTEM



The components that make up the airbag system are sensitive to electrical or physical interference, either of which could easily damage the system and cause inadvertent operation or a malfunction of the airbag module.

To prevent malfunction of the airbag system always consult your Dealer/Authorised Repairer before fitting any of the following:

- Electronic equipment such as a mobile phone, two-way radio or in-car entertainment system.
- Accessories attached to the front of the vehicle.
- Any modification to the front of the vehicle.
- Any modification involving the removal or repair of any wiring or component in the vicinity of any of the airbag system components, including the steering wheel, steering column, pillar trim, roof lining, door trim, instrument or fascia panels.
- Any modification to the fascia panels or steering wheel.

ANTI-THEFT SYSTEM



No modifications or additions should be made to the anti-theft system. Such changes could cause the system to malfunction.

OWNER MAINTENANCE



Any significant or sudden drop in fluid levels, or uneven tyre wear, should be reported to a qualified technician without delay.

In addition to the routine services and inspections, a number of simple checks must be carried out more frequently. These checks can be carried out by the owner and advice is given on the pages that follow.

DAILY CHECKS

- Operation of lamps, horn, direction indicators, wipers, washers and warning indicators.
- Operation of seat belts and brakes.
- Look for fluid deposits underneath the vehicle that might indicate a leak. Condensation drips from the air conditioning are normal.

WEEKLY CHECKS

- Engine oil level.
- Engine coolant level.
- Brake fluid level.
- Power steering fluid level.
- Screen washer fluid level.
- Tyre pressures and condition.
- Operate air conditioning.

Note: *The engine oil level should be checked more frequently if the vehicle is driven for prolonged periods at high speeds.*

DIESEL PARTICULATE FILTER (DPF)

Diesel vehicles equipped with a particle filter have more efficient emission control. The particles in the exhaust gases are collected in the filter during normal driving.

When a DPF message is displayed, accompanied by an amber warning lamp, the filter requires a regeneration cycle to clean itself. This requires the engine to have reached normal operating temperature. Regeneration takes place automatically at an interval of approximately 300-900 km (190-560 miles) depending on driving conditions. Regeneration normally takes 10-20 minutes and is automatically requested by the engine control module if the vehicle is driven steadily at vehicle speeds between 60 km/h to 112 km/h (40 mph to 70 mph). It is possible that the regeneration process will occur at lower vehicle speeds, but the events may take a little longer at a 50 km/h (30 mph) average speed.

Note: *If regeneration is not successfully carried out, the amber warning lamp will eventually be replaced by a red warning lamp.*

If a DPF message is displayed, accompanied by a red warning lamp, contact a Dealer/Authorised Repairer as soon as possible.

DRIVING SHORT DISTANCES OR IN COLD WEATHER

If the vehicle is frequently driven short distances or in cold weather conditions then the engine may not reach normal operating temperature. This means that regeneration of the Diesel Particulate Filter (DPF) does not take place and the filter is not efficiently cleaned. When the filter reaches a condition when a filter regeneration is appropriate and the current drive style is not appropriate, a warning triangle in the Instrument panel illuminates and the message **DPF Full**. **See manual** is displayed in the Message centre. This is not indicating a fault condition with the vehicle and no dealership support should be required. Start regeneration of the filter by driving the vehicle, preferably on a main road or motorway. The vehicle should then be driven for approximately 20 minutes or more.

When regeneration is complete, the warning text is cleared automatically.

Note: *A small increase in fuel consumption may be noticed temporarily during regeneration.*

ARDUOUS DRIVING CONDITIONS

If the vehicle is frequently driven short distances in cold weather then the engine may not reach normal operating temperature. This means that regeneration of the Diesel Particulate Filter (DPF) does not take place and the filter is not cleaned. When the filter reaches approximately 80% capacity, a warning triangle on the Instrument panel illuminates, and the message **DPF FULL SEE HANDBOOK** is displayed in the Instrument panel. Start regeneration of the filter by driving the vehicle, preferably on a main road or motorway. The vehicle should then be driven for approximately 20 minutes more. Where possible the parking heater should be used in cold weather so that the engine reaches normal operating temperature more quickly.



When regeneration is complete the warning text is cleared automatically.


Note: A small reduction in engine power, and increase in fuel consumption may be noticed temporarily during regeneration.

SAFETY IN THE GARAGE


-  If the vehicle has been driven recently, do not touch exhaust and cooling system components until the engine has cooled.
-  Never leave the engine running in an unventilated area.
-  Do not work beneath the vehicle with a jack as the only means of support.
-  Keep your hands and clothing away from drive belts, pulleys and fans. Some fans may continue to operate after the engine has stopped.
-  Remove metal wrist bands and jewellery, before working in the engine compartment.
-  Do not touch electrical leads or components while the engine is running, or with the starter switch turned on.
-  Do not allow tools or metal parts of the vehicle to make contact with the battery leads or terminals.

FUEL SYSTEM


-  Under no circumstances should any part of the fuel system be dismantled or replaced by anyone other than a suitably qualified vehicle technician.
-  Ensure sparks and naked lights are kept away from the engine compartment.

-  Wear protective clothing, including, where practicable, gloves made from an impervious material.

USED ENGINE OIL

-  Prolonged contact with engine oil may cause serious skin disorders, including dermatitis and cancer of the skin. Always wash thoroughly after contact.

OPENING THE BONNET

-  Do not attempt to open the bonnet if the pedestrian protection system has deployed.



1. Pull the bonnet release handle located in the left-side front footwell.
2. Lift the bonnet safety catch lever located below the centre point of the bonnet, and raise the bonnet.

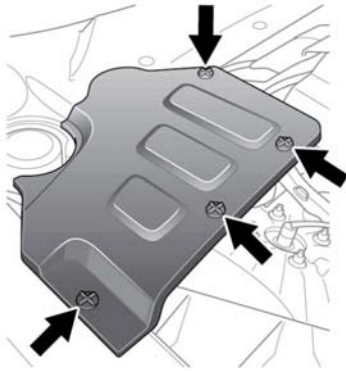
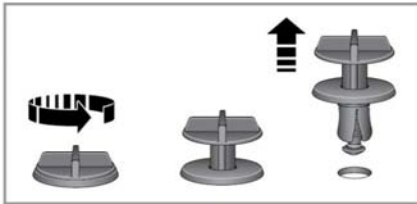
CLOSING THE BONNET

-  Do not drive with the bonnet retained by the safety catch alone.

Maintenance

1. Lower the bonnet until the safety catch engages. Using both hands, press the bonnet down until the catches click.
2. Check that both catches are fully engaged by attempting to lift both sides of the front edge of the bonnet. This should be free from all movement.

UNDER BONNET COVERS - REMOVAL



E155249

1. Release and remove the turnbuckle clips securing the cover.
2. Lift the edge of the cover and slide to remove.

UNDER BONNET COVERS - REFITTING



Before refitting the underbonnet cover, make sure that no pipes, cables or other items, have been trapped between the cover and casing.

1. Place the cover over the casing, ensuring all holes are aligned.
2. Push the cover down firmly, insert and fasten the turnbuckle clips.

UNBLOCKING WASHER JETS



Do not operate the washer jets during adjustment. Windscreen washer fluid may cause irritation to the eyes and skin. Always read and observe the washer fluid manufacturers instructions.

If a washer jet becomes blocked, use a thin strand of wire to unblock the jet by inserting the wire into the jet. Make sure that the wire is completely removed after unblocking.

CHANGING A BULB



Always replace bulbs with the correct type and specification. If you are in any doubt contact your Dealer/Authorised Repairer for advice.

XENON LAMPS



Replacement or maintenance of Xenon lamps should only be carried out by suitably qualified personnel.



High voltage is required to ignite the Xenon lamps.



Xenon lamp units operate at a very high temperature. Make sure that the lamp units have cooled before attempting to touch them.

HEADLAMP BULB REPLACEMENT



Removal of the headlamp unit should only be attempted by a qualified technician. If in doubt, consult your Dealer/Authorised Repairer.

REAR LAMP REMOVAL



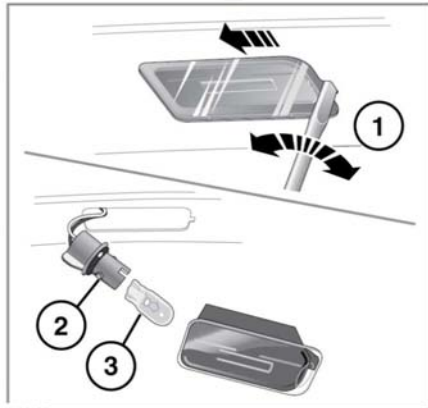
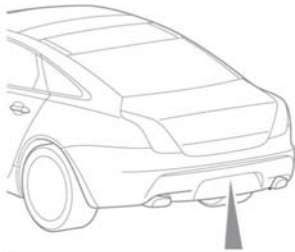
Removal of the rear lamp unit should only be attempted by a qualified technician. If in doubt, consult your Dealer/Authorised Repairer.

HIGH LEVEL BRAKE LAMP BULB REPLACEMENT



Removal of this lamp unit should only be attempted by a qualified technician. If in doubt, consult your Dealer/Authorised Repairer.

LICENSE PLATE LAMP BULB REPLACEMENT



E132856

1. Insert a small flat-bladed screwdriver into the indent as shown and carefully lever out the side of the lamp unit and remove.
2. Twist the bulb holder 90 degrees anticlockwise to access the bulb.
3. Pull to remove the bulb from the holder.

See **208, BULB SPECIFICATION** for the replacement bulb specification list.

WIPERS SERVICE POSITION

Note: The Smart key must remain in the vehicle while the wiper blades are replaced.

Before changing a wiper blade, the wiper arms must be set in the 'service' position as follows:

1. Make sure the ignition is turned off.
2. Turn the ignition on, then off again.
3. Immediately pull the wiper stalk towards the driver (as if to command a single wipe), hold this position while turning on the ignition again.
The wipers will move to their service position.
4. When the new parts have been fitted, turn the ignition off. This will return the wipers to the park position.

Note: Fit only replacement wiper blades that are identical to the original specification.

SUNROOF RESET

If the battery is disconnected, or the power supply is interrupted, while the sunroof is partially open it will need to be reset.

Once the power supply is restored, reset the sunroof as follows:

1. Switch the ignition on.
2. Fully close the sunroof.
3. Press the front of the sunroof switch, and hold for 45 seconds.

Maintenance

4. After 45 seconds the sunroof will begin to move. Keep the front of the switch pressed until the sunroof and the roof blinds have fully opened, then closed.
5. Once the open/close cycle has completed and the sunroof has stopped moving, release the switch.

The sunroof can now be operated as normal.

WINDOW RESET

The windows will need to be reset if the battery is disconnected, becomes discharged or power supply is interrupted.

Once the power supply is restored, reset the windows as follows:

1. Close the window fully.
2. Release the switch, then lift it to the close position and hold for two seconds.
3. Open the window fully.
4. Release the switch, then push it to the open position and hold for two seconds.
5. Lift and release the switch to operate the one-touch function.
6. Repeat the procedure on each window.

WARNING TRIANGLE

If supplied, the warning triangle is located in the luggage compartment, attached to an anchor point.

FIRST AID KIT

If supplied, the first aid kit is strapped to the side of the luggage compartment.

FIRE EXTINGUISHER

If supplied, the fire extinguisher will be located either in the luggage compartment, or mounted to the front passenger seat.