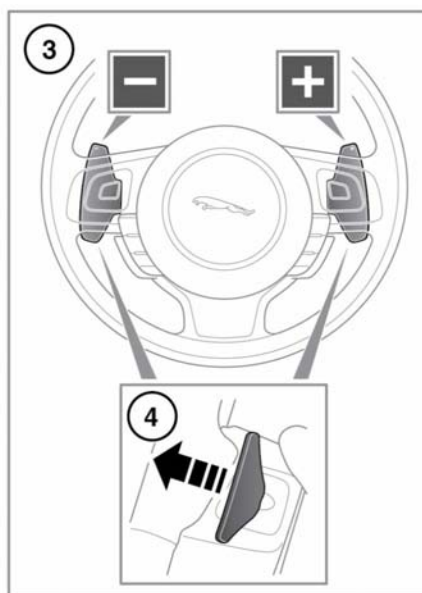
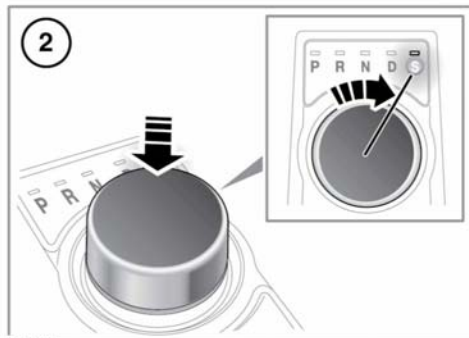
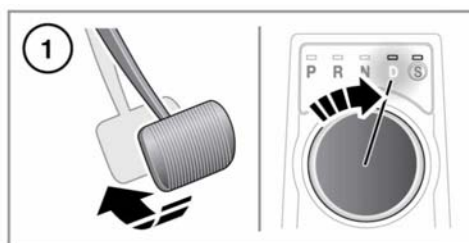


## AUTOMATIC TRANSMISSION



1. To select Drive (**D**) or Reverse (**R**) gear, press the brake pedal and rotate the rotary drive selector.
2. To select Sport mode, from **D** press the rotary drive selector down and rotate to **S**.
3. Gear shift paddles (left paddle for downshifts, right paddle for upshifts), see **82, MANUAL GEAR SELECTION**.

**Note:** The gear shift paddles can be configured to operate in '**S only**' or '**D and S**' via the Vehicle Set-up menu. See **36, INSTRUMENT PANEL MENU**.

4. Pull briefly to change gear.  
To exit manual mode, either pull and hold the shift-up paddle for approximately one second (to return directly to automatic operation in **D** or **S**) or, if in **S**, rotate the gear selector to the **D** position.

**Note:** The selected gear will be displayed in the instrument panel, also see **83, DYNAMIC MODE**.

- ⚠ Never select the Park (**P**) position while the vehicle is in motion.
- ⚠ Never select the Reverse (**R**) position while the vehicle is in forward motion.
- ⚠ Never select a forward gear while the vehicle is moving backwards.
- ⚠ Do not rev the engine or allow it to run above normal idle speed while selecting **D** or **R**, or while the vehicle is stationary with any gear selected.
- ⚠ Do not allow the vehicle to remain stationary with a drive gear selected and the engine running. Always select Park **P** or Neutral **N** if the engine is to idle for a prolonged period.

If the rotary drive selector is obstructed, remove the obstruction and then start the engine. The selector should elevate.

If the rotary drive selector fails to elevate and there is no obstruction, a fault in the system is indicated. The selector can be used in the lowered position, but be aware that it will not automatically select **P** when the engine is switched off. Therefore **P** should be selected manually. The fault should be rectified by a Dealer/Authorised Repairer at the earliest opportunity.

## MANUAL GEAR SELECTION

When the rotary drive selector is in the **D** position (unless set to '**S only**' mode), manual mode may be directly accessed by the single action of operating the steering wheel mounted shift paddles.

If continued use of manual mode is required, the rotary drive selector may be subsequently moved to the **S** position to enter permanent manual mode.

If the rotary drive selector remains in the **D** position, temporary manual mode will be held while the driver is accelerating, decelerating, cornering or continuing to request shifts via the paddles.

## ROTARY GEAR SELECTOR

The rotary drive selector elevates out of the centre console when the engine is started, in readiness for gear selection.

**P** should be selected before switching off the engine. However, it is possible to switch the engine off with **R**, **D** or **S** selected - the selector will automatically select **P**, while retracting into the centre console.

**Note:** *If the engine is switched off with **N** selected, the system will wait for 10 minutes before selecting **P**. This procedure is to allow the vehicle to be conveyed through a car wash only and should not be used for vehicle recovery purposes.*

To prevent the transmission from automatically selecting **P** (e.g. for vehicle recovery purposes) it is necessary to activate the Emergency Park Release. Vehicle recovery should only be undertaken by qualified personnel.

## LIMP-HOME MODE

**Note:** *The driver should be aware that the vehicle's performance will be reduced and must take this into account when driving. Also the use of the gear shift paddles will be disabled. In this event, seek qualified assistance as soon as possible.*

In the event of an electrical or mechanical failure, transmission operation will be limited.

**P**, **R**, **N**, **D** and **S** may still be used to enable the vehicle to be driven to a safe area.

Some faults will cause the selector to be locked in position until the ignition is switched off. If the selected range flashes, it signifies that the driver request cannot be engaged. Re-select **N** and repeat the attempt.

If the transmission is still unable to select the requested gear, contact your Dealer/ Authorised Repairer.