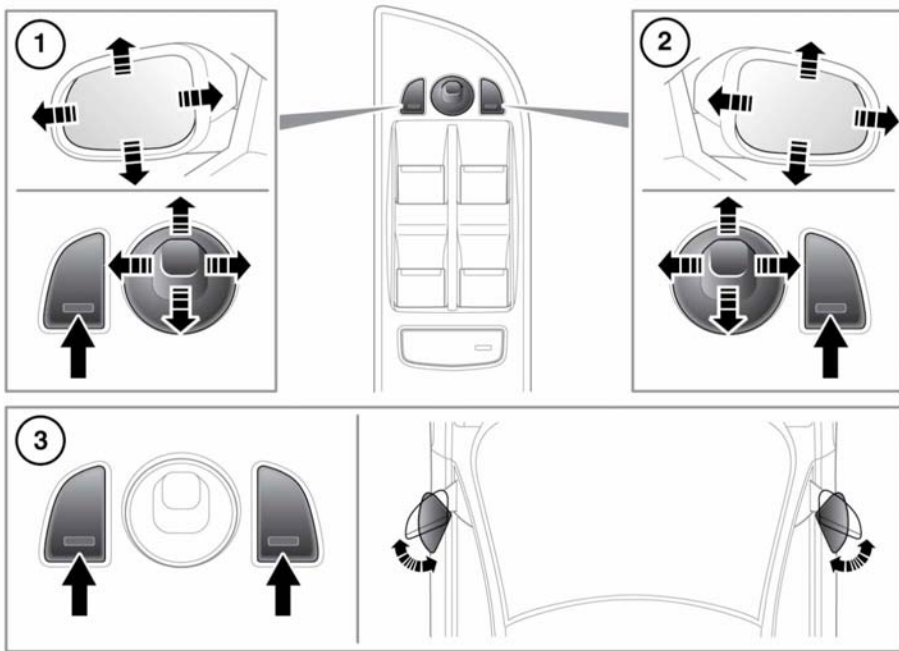


EXTERIOR MIRRORS



E132474

1. Left mirror adjustment.
2. Right mirror adjustment.
3. Powerfold/unfold: Press both buttons simultaneously. This feature is inhibited at speeds over 110 km/h (70 mph).

The mirrors can be adjusted and folded when the ignition is on and for up to 5 minutes after the ignition is switched off, provided the driver's door is not opened.

Press the appropriate button to select the mirror to be adjusted (button indicator illuminates), then use the joystick control to adjust the mirror glass.

Note: Depending on the type of lens used, distances may be difficult to judge accurately when only using the mirrors.



The mirrors can be configured to automatically fold when the vehicle is locked and unfold when unlocked. This feature can be enabled or disabled by your Dealer/Authorised Repairer.

If the mirrors are accidentally knocked out of position (i.e. so only one is folded), press both buttons simultaneously to resynchronise.

Note: If the mirrors were folded using the switches, they will not unfold when the vehicle is unlocked.

Mirrors

Note: Up to 3 different exterior mirror positions can be stored and recalled using the driving position memory feature. See **13, DRIVING POSITION MEMORY**.

MIRROR DIP WHEN REVERSING

The mirrors can be configured so that when Reverse (R) gear is selected, the passenger door mirror is automatically adjusted to provide an improved viewing angle for reversing.

The exact dipped position can be adjusted using the joystick control, when the mirror is dipped. The next time reverse is selected, the newly adjusted position will be selected.

When the gear selector is moved out of reverse, or if vehicle speed exceeds 12 km/h (7.5 mph) while reversing, the mirror will return to its previous position.

Mirror dip can be selected or deselected from the Instrument panel menu. Select **Features** from the **Vehicle Set-up** menu, then select the desired option from the list.