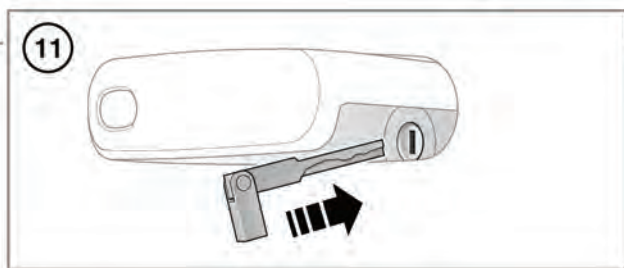
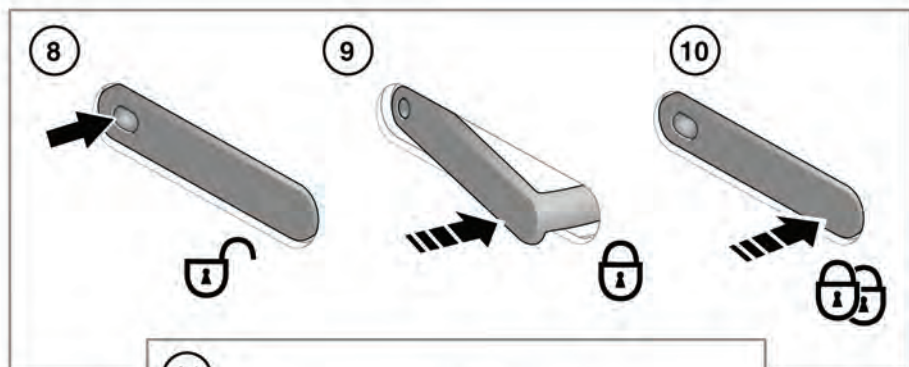
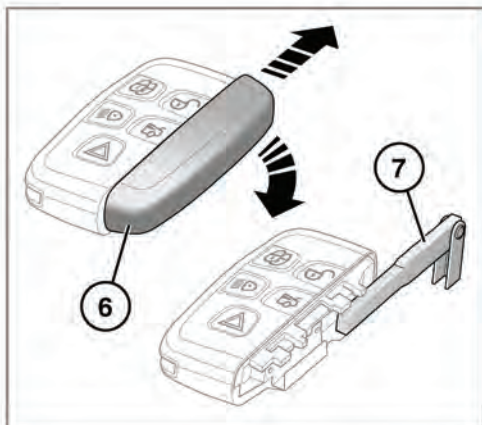
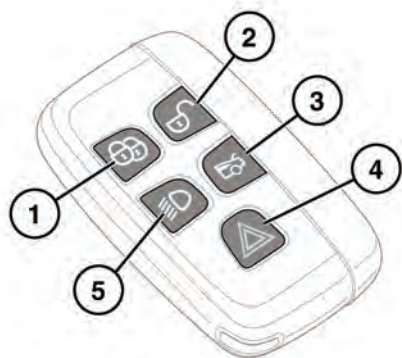


# Entering the vehicle

## UNLOCKING THE VEHICLE



E148394



**Any person fitted with an implanted medical device should make sure that the device is kept at a distance of at least 23 cm (9 ins) away from any transmitter mounted in the vehicle, see 181, REMOTE KEY FOB TRANSMITTER LOCATIONS. This is to avoid any possibility of interference between the system and device. Interference may cause the implanted medical device to malfunction, causing serious injury or death.**



**To prevent accidental or unauthorised operation, never leave children or animals unattended in the vehicle. The vehicle can be operated when the Smart key is inside the vehicle.**

1. Lock: Press to secure the vehicle.

**Note:** Handles will automatically retract to the flush position on both doors.

The vehicle can be Single or Double locked. See **12, LOCKING AND ARMING THE ALARM.**

2. Unlock:

**Note:** Handles will automatically deploy on all unlocked doors.

The vehicle can be unlocked using either Single or Multi-point entry.

When Single point entry is enabled, the first press unlocks the driver's door and enables the other door to be opened from the inside. The hazard warning lamps will flash twice to indicate that the vehicle is unlocked and the alarm has been disarmed. A second press unlocks the passenger door and the luggage compartment.

If Multi-point entry is enabled, press briefly to unlock all the doors and luggage compartment and to disarm the alarm. The hazard warning lamps will flash twice to indicate that the vehicle is unlocked and the alarm has been disarmed.

To change from Single to Multi-point entry (or vice versa), press both the lock and unlock buttons simultaneously for 3 seconds. The hazard warning lamps will flash twice to confirm the change.

The change can also be achieved using the instrument panel menu. See **31, INSTRUMENT PANEL MENU.**

3. Press to open the luggage compartment. The vehicle security system will remain active for the period the luggage compartment is open but the intrusion and inclination sensing systems will be inhibited. Door and bonnet security will remain active.  
The security system will re-arm to its previous state when the luggage compartment is closed.
4. Panic alarm. Press and hold for 3 seconds, or press 3 times within 3 seconds, to activate the horn, siren and hazard lamps. After 5 seconds, the alarm can be cancelled by pressing the panic alarm button for 3 seconds or by pressing the button three times within 3 seconds.  
The emergency alarm will also be cancelled if the vehicle detects a valid Smart key when the START/STOP button is pressed.
5. Press to switch on the approach illumination for up to 120 seconds. The illumination time is set using the exit delay switch. Pressing the button again or operating the starter button will turn the approach lamps off.