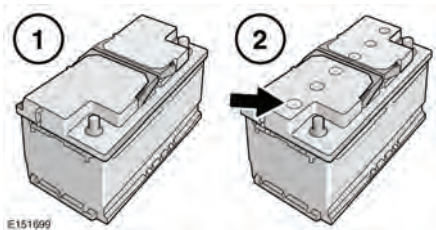


- ❗ Do not allow battery electrolyte to come into contact with fabrics or painted surfaces. If battery electrolyte comes into contact with any surface, the surface should be washed down immediately with copious amounts of clean water.

Remove the luggage compartment, left hand cover to access the battery.

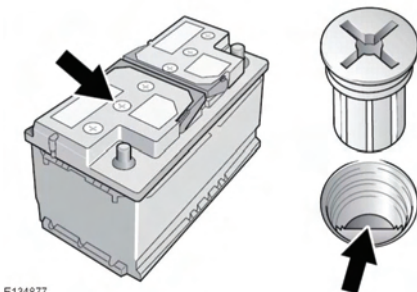


Your vehicle battery will be either:

1. Absorbed Glass Mat (AGM) battery. These are sealed for life and require no maintenance.

- ❗ Do not attempt to open or remove the top from an AGM battery.

2. Low maintenance battery. The battery cells' electrolyte levels can be checked and topped up.



In hot climates more frequent checks of the battery electrolyte level and condition are required. If necessary, the battery cells can be topped up using distilled water.

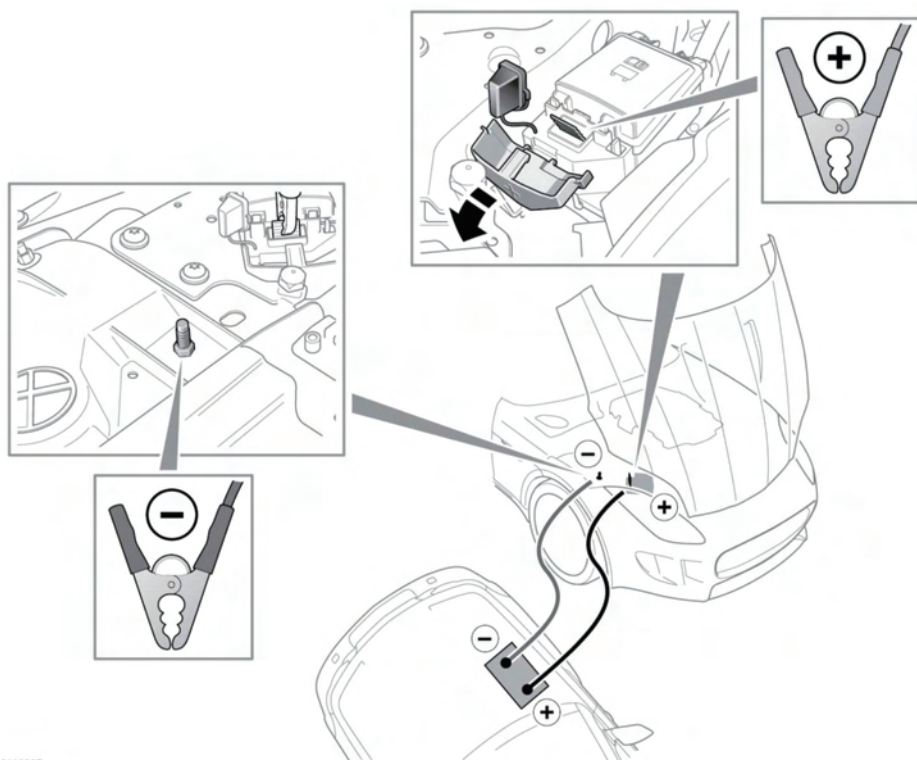
1. Unscrew counter-clockwise to remove the six cell plugs and store carefully.
2. Check that the surface level of the liquid (electrolyte) is level with the plastic level indicator.
3. If necessary, top up with distilled water, but never overfill.
4. Refit the six cell plugs. Screw clockwise to tighten.

CONNECTING JUMP LEADS

- ⚠ Always wear appropriate eye protection when working with batteries.
- ⚠ Do not disconnect the discharged battery.
- ⚠ Do not connect a jump lead to any battery terminal on your vehicle.
- ⚠ Make sure the bodywork of the donor and disabled vehicles do not touch.
- ⚠ Make sure both batteries are of the 12 volt type and that the jump leads have insulated clamps and are approved for use with 12 volt batteries.

Note: Before connecting jump leads, make sure that all electrical equipment on the disabled and donor vehicles have been switched off.

Vehicle battery



149267

1. Connect the positive jump lead (red) to the recommended positive boost terminal on the donor vehicle.
2. On your vehicle, release the access cover and remove the positive boost terminal cover. Connect the other end of the positive jump lead (red) to the positive boost terminal, as illustrated.
3. Connect the negative jump lead (black) to the recommended negative boost terminal of the donor vehicle.
4. Connect the other end of the negative jump lead (black) to your vehicle's negative boost terminal, as illustrated.



Check that all cables are clear of any moving components and that all 4 connections are secure.

5. Start the engine of the donor vehicle and allow it to idle for a few minutes.
6. Start the engine of the disabled vehicle.
Note: If repeated attempts to start the disabled vehicle are needed, allow the donor vehicle to idle for a few minutes between attempts.
7. Allow both vehicles to idle for 2 minutes.
8. Switch off the donor vehicle.