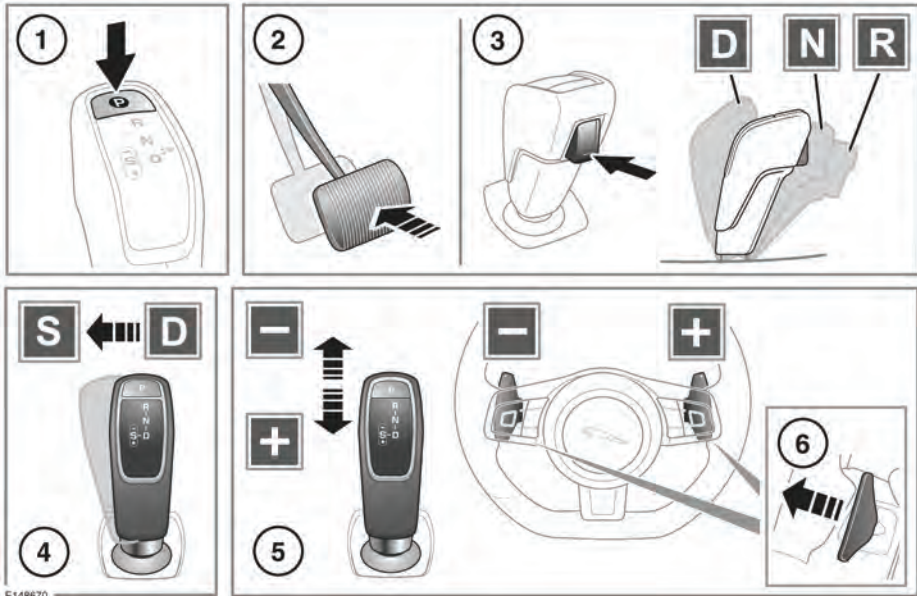


AUTOMATIC TRANSMISSION



Gear selector status is displayed in the Message centre. See **31, INSTRUMENT PANEL**. Also the appropriate LED indicator, on top of the gear selector, will illuminate to confirm selection.

Note: When the gear selector is released, after normal operation, it will return to the central position except for when in the Sport (S) position.

⚠ **Park (P) should only be engaged when the vehicle is stationary. If any other gear position is selected while the vehicle is stationary, the vehicle can move unexpectedly which may result in death or serious injury. Always make sure the parking brake is applied after engaging P.**

ⓘ Never select **P** while the vehicle is in motion. Doing so can result in serious transmission damage.

Note: **P** cannot be selected by manually moving the gear selector.

1. Press to select Park (**P**). The Park switch LED will illuminate to confirm.

Select **P** before switching off the engine.

Note: **P** can be selected from any gear selector position.

Note: If the engine is switched off with Neutral (**N**) selected, the system will wait for 10 minutes before selecting **P**. This procedure is to allow the vehicle to be conveyed through a car wash only and should not be used for vehicle recovery purposes. See **173, TRANSPORTING THE VEHICLE**.

2. When the vehicle is stationary, depress the brake pedal prior to selecting Drive (**D**), Neutral (**N**) or Reverse (**R**).