
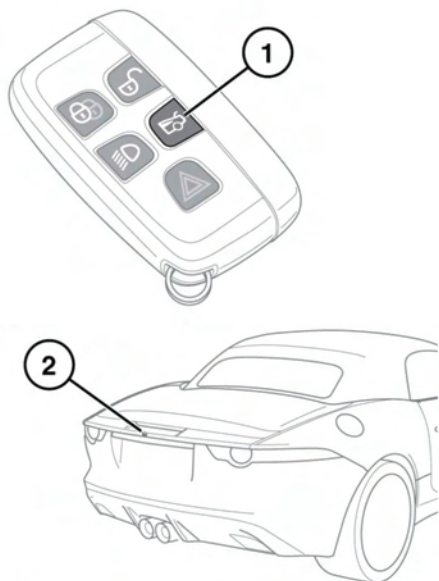


# Luggage compartment

## OPENING AND CLOSING THE LUGGAGE COMPARTMENT

 If the Smart key is inadvertently left inside the luggage compartment and the vehicle is locked and the alarm set, an audible warning will sound and the luggage compartment will re-open after 3 seconds.

**Note:** If the Smart key is inside a metal box, it will not be detected by the vehicle security system.



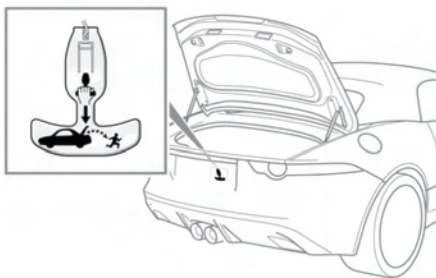
E148781

The luggage compartment can be opened using the appropriate button on the Smart Key (1), or via keyless entry, see **8, KEYLESS ENTRY**. It can also be opened using the exterior release (2), provided the doors are unlocked and Park (P) is engaged.

Provided the vehicle is not locked or alarmed, the luggage compartment can also be opened using the interior release button, see **206, DRIVER CONTROLS**.

## LUGGAGE COMPARTMENT EMERGENCY RELEASE

The mechanical luggage compartment release provides a means of escape in the event of someone being locked in the luggage compartment. Adults are advised to familiarise themselves with the operation of the release handle.



E148783

The release handle glows in the dark and is located inside the luggage compartment as illustrated. To open the luggage compartment from the inside, pull the handle while pushing the luggage compartment lid upwards.

Return the handle to its stowage position after use.