


Fuel and refuelling

METHYL TERTIARY BUTYL ETHER (MTBE)

Unleaded fuel containing an oxygenate known as MTBE can be used provided that the ratio of MTBE to conventional fuel does not exceed 15%. MTBE is an Ether based compound derived from Petroleum, which has been specified by several refiners as the substance to enhance the Octane rating of fuel.


RUNNING OUT OF FUEL

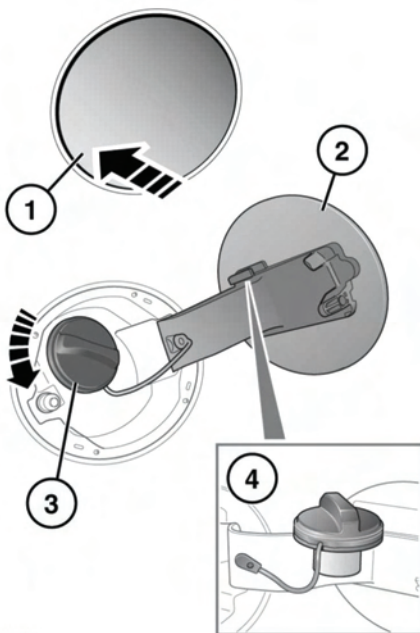
 Avoid running out of fuel!

If the vehicle does run out of fuel, a minimum of 4 litres (0.9 gallons) will be required to restart the engine. The vehicle should be left with the ignition on for 5 minutes after refuelling before attempting to restart the engine.

Note: *If the vehicle does run out of fuel, seeking qualified assistance is advisable.*

FUEL FILLER FLAP

 Take note of all warnings and instructions given on the label affixed to the inside of the filler flap.



E149660

The vehicle must be unlocked using the Smart key before the filler flap can be opened.

1. Press and release the flap (in the area indicated) to unlatch.
2. Pull the flap open. The label on the inside of the flap indicates the correct fuel for the vehicle.
3. Twist the cap counter-clockwise to undo.
4. Stow the cap on the lip provided on the top of the hinge arm, as shown.

When replacing the cap, turn it clockwise until the ratchet clicks. Failure to do so may cause the Engine malfunction warning lamp to