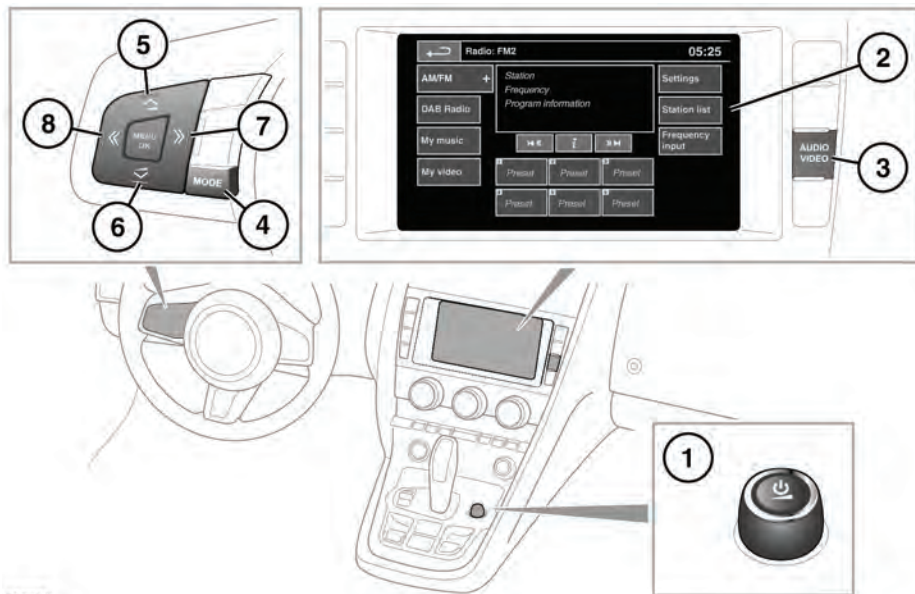


Audio/video overview

AUDIO/VIDEO CONTROLS



E149184



In the interest of safety, only operate, adjust or view the system when it is safe to do so.



Sustained exposure to high sound levels (greater than 85 decibels) can damage your hearing.

Note: Some types of body mounted accessories (for example, external luggage compartment stowage devices) may affect the performance of this system.

1. On/off and volume control:

- Press to switch the system on/off.
- Rotate to adjust volume level (displayed on the touch screen).

Note: The audio system operates with the ignition on or off but will switch off with the ignition and need to be switched on again.

2. Touch screen.

3. Shortcut to the **Audio/video** menu.

4. Steering wheel controls, **MODE**:

- Short press to scroll through all audio/video sources.
- Long press to scroll through audio/video source sub selections, e.g. In My music: iPod, Bluetooth, stored CD and CD etc.

5. Press to increase the volume.

6. Press to decrease the volume.

7. Seek up:

- Short press to select the next radio preset, next preset TV channel, or next track on the chosen audio source.
- Long press to seek to the next radio station or to select the next TV channel on the channel list.