

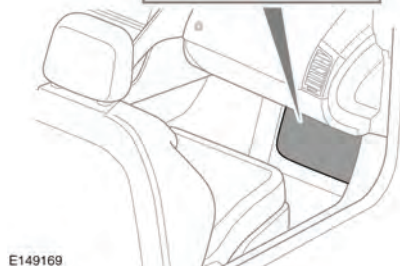
Convertible roof

MANUALLY CLOSING THE ROOF

In the event that the vehicle's systems will not close the convertible roof, from the fully open position, then the manual closing procedure should be carried out.



Make sure that Park (P) is engaged, the parking brake is applied and the ignition is off.

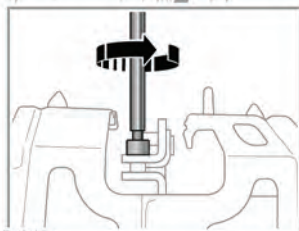
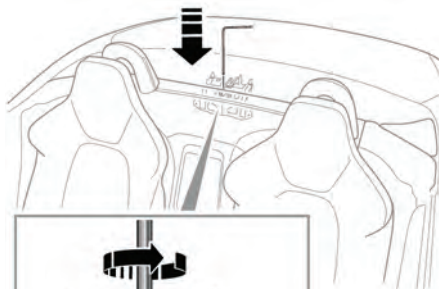


E149169

Access the tools:

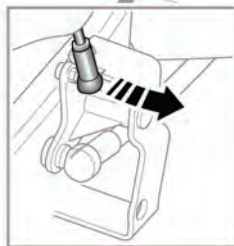
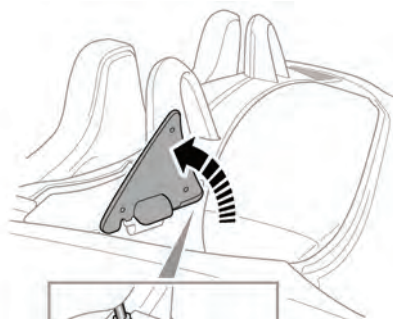
Remove the 2 tools from behind the passenger foot-well fuse box cover. See **150, FUSE BOX LOCATIONS**.

Releasing and Closing the roof:



E149185

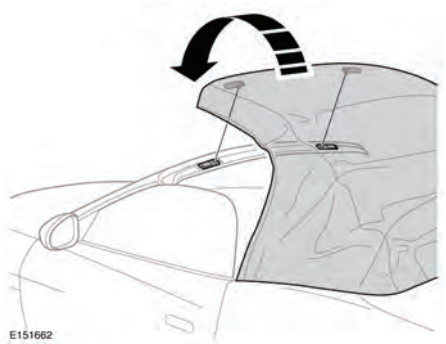
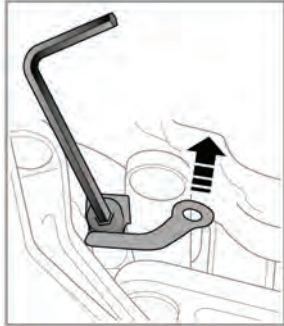
Using the allen key tool, rotate the release screw 7 turns counter clockwise to release the down-lock mechanism.



E151660

Lift the panel. A gradual increase of effort is required to reach the illustrated vertical

position. Using the flat blade of the allen key tool, lightly pry off the control rod ball socket. Repeat this procedure on the other side of the vehicle.



Carefully raise the roof to the closed position. An increase in effort is required to reach the fully closed position.

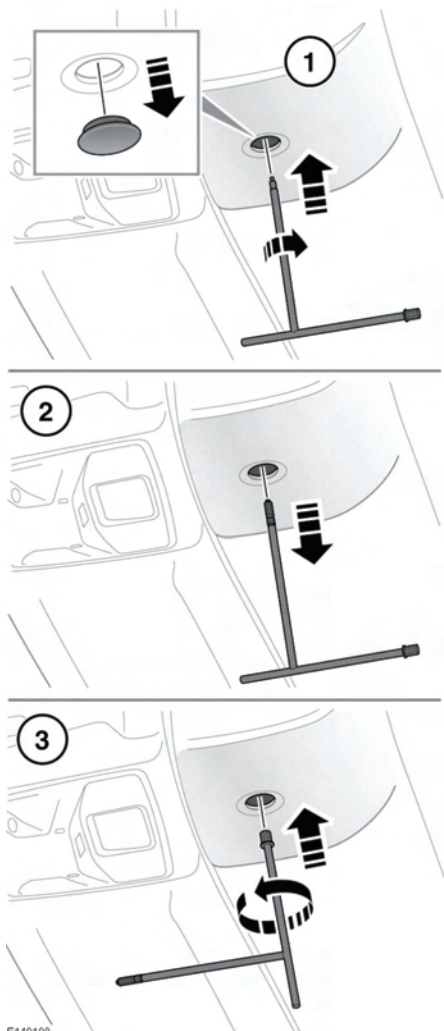
Note: Make sure that the roof, front latch pins, are aligned into the roof header latch locks.



Lift the panel. With the allen key, unscrew and remove the bolt using the attached bracket. Repeat this procedure on the other side of the vehicle.

Convertible roof

Locking the roof:



1. Remove the access plug from the centre of the roof header trim. Insert the screw thread end of the tool into the motor shaft. To fully engage, rotate clockwise until resistance is felt. It does not need to be tight.

2. Pull the tool to remove the motor shaft.

Note: A strong, positive downward pull is required.

Note: Remove the motor shaft from the tool and stow in the vehicle.

3. Push the alternate, large serrated end of the tool into the motor and turn a complete revolution counter clockwise. Remove the tool and replace the access plug.
4. Replace the tools and the passenger footwell fuse box cover.

Note: Do not attempt to operate the convertible roof until a repair has been carried out by a Dealer/Authorised Repairer.

E149198