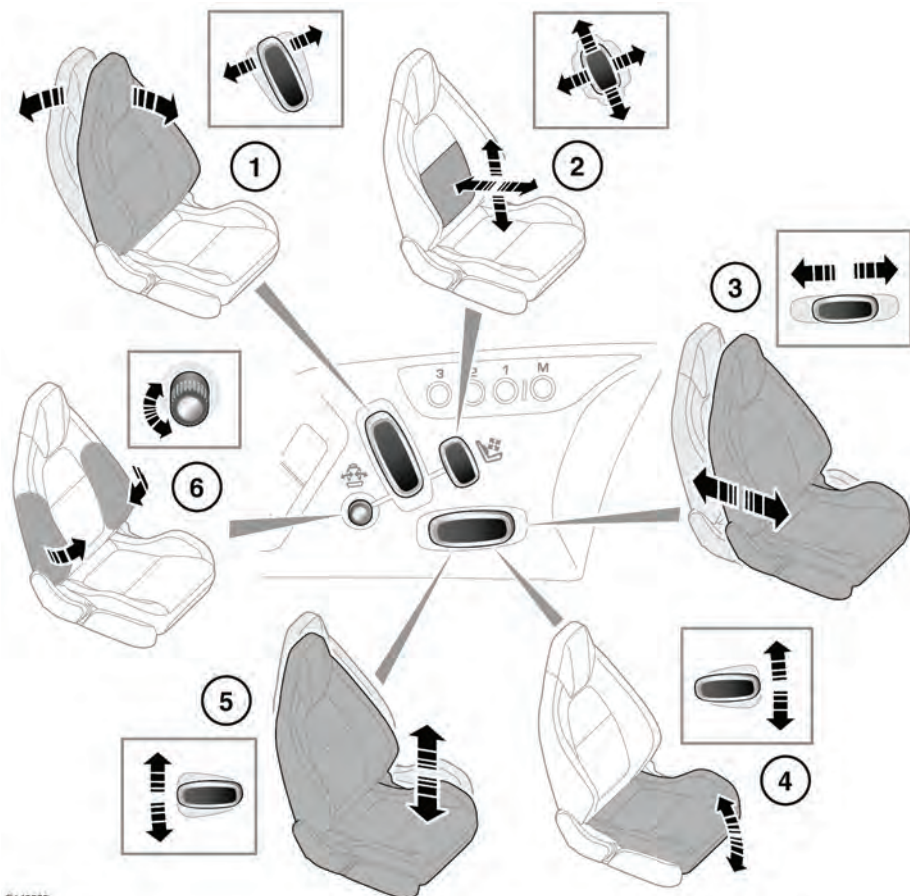


Front seats

ELECTRIC SEATS



E149505



Do not adjust the seat while the vehicle is moving. Doing so could cause loss of vehicle control and personal injury.

1. Seat back angle adjustment.
2. Lumbar support adjustment.
3. Forward and rearward adjustment.
4. Cushion front tilt adjustment.

5. Height adjustment.
6. Bolster adjustment (inflate/deflate).

To adjust the seats, the Smart key must be in the vehicle and the ignition turned on.

If an obstruction is encountered while the seat is in motion, the seat will stop moving and further movement will be restricted until reset.