

Entering the vehicle

REMOTE KEY FOB CARE

⚠ To prevent accidental operation, which may result in an injury, never leave the Smart key in the vehicle if children or animals are also left in the vehicle.

ⓘ Do not expose to extremes of heat, dust, humidity or allow contact with fluids. Do not leave the transmitter exposed to direct sunlight.

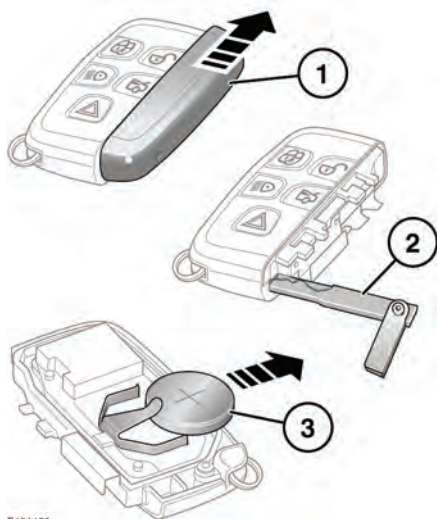
The emergency key blade number is recorded on an attached label, which should be peeled off and affixed to the correct area in the Service Portfolio, supplied in the literature pack. Keep the Service Portfolio safe, but not in the vehicle.

The operational range of the Smart key will vary considerably depending on atmospheric conditions and interference from other transmitting devices.

Note: The radio frequency used by the Smart key may be used by other devices (e.g. medical equipment). This may prevent the Smart key from operating correctly.

REMOTE KEY FOB BATTERY REPLACEMENT

When the battery needs replacing, there will be a significant decrease in the effective range and the message **SMART KEY BATTERY LOW** is displayed in the Message centre.



E151480

To replace the battery:

1. Slide the cover in the direction of the arrow until a click is heard. Remove the cover.
2. Use the emergency key blade to separate the Smart key body.
3. Fit a new CR2032 type battery (available from a Dealer/Authorised Repairer), with the positive (+) side upwards.

Note: Handle a new battery with the outer edge. Avoid touching the top and bottom faces of the new battery, as moisture/oil from your fingers can reduce battery life and corrode the contacts. If skin contact is made clean with a lint free cloth.

Refit the parts in the reverse order, ensuring that they click securely into place.



Battery disposal: Used batteries must be disposed of correctly, as they contain harmful substances. Seek advice on disposal from a

Dealer/Authorised Repairer and/or a local authority.

Instructional video - Changing the Smart key battery.



E151798