

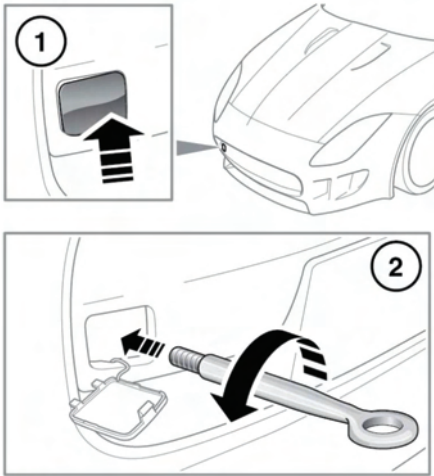


## TOWING EYES

-  The towing eye at the front of the vehicle is designed for on-road recovery only.
-  Do not tow the vehicle on all four wheels.

## ATTACHING THE FRONT TOWING EYE





E150044

Vehicles supplied with a spare wheel, the front towing eye is included in the vehicle tool kit, located in the luggage compartment. See **171, WHEEL CHANGING**.

Vehicles not supplied with a spare wheel, lift up the small access panel in the left side, forward section of the luggage compartment floor covering.

1. Pop out the access cover in the front bumper.
2. Locate the towing eye through the bumper and screw the towing eye counter-clockwise into its fixing, until secure.

## TRANSPORTING THE VEHICLE

-  Only use the lashing points or over-wheel lashings. Lashing over the body or suspension is not permissible as settling of the suspension will cause the lashing straps to slacken.
-  *Make sure the rear spoiler is in the fully closed position before transporting the vehicle.*

The recommended method for recovery/transportation of the vehicle, is on a transporter or trailer designed for that purpose.

Make sure that transportation is carried out by suitably qualified persons, and that the vehicle is secured correctly.

To allow the vehicle to roll freely, the transmission will need to be released from Park (P) via the use of the Emergency park release.