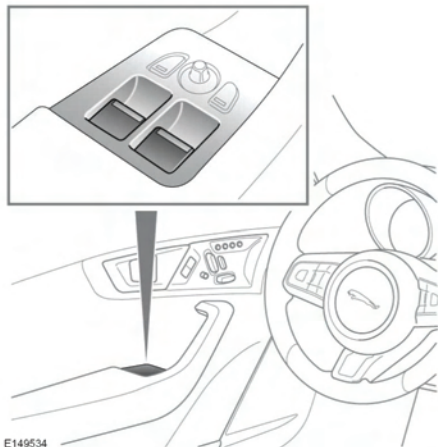


## ELECTRIC WINDOWS



E149534



**To prevent accidental operation, never leave the Smart key in the vehicle if children or animals are also left in the vehicle.**

Window switches: The windows will operate for 5 minutes after the engine is switched off, as long as none of the doors are opened.

When the door is closed: press (or pull) the switch briefly to open (or close) a window. Window travel can be stopped at any time by operating the switch again.

Both windows have a one-touch facility.



Any ice should be removed from the windows prior to operation.

## WINDOW ANTI-TRAP PROTECTION



**Before closing a window, ensure that no occupants have any part of their body in a position where it could be trapped. Death or serious injury could occur, even with an anti-trap system.**

Anti-trap protection is designed to stop window movement if an obstruction or resistance is detected. Check the window and

its aperture and remove any obstructions. The override procedure is as follows:

1. Attempt to close the window. Anti-trap will prevent closure and lower the window.
2. Within 10 seconds, attempt to raise the window again. Anti-trap will prevent closure and lower the window.
3. Attempt to close the window for a third time, this time holding the switch in the close position. The window will raise whilst the switch is held. Hold until closed.

**Note:** If this procedure fails to remove the blockage, or if the windows do not operate correctly, the window operation may need to be reset. See **136, WINDOW RESET**.