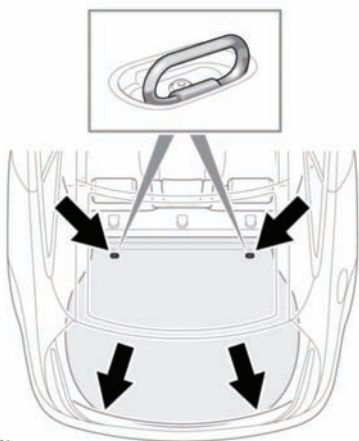


Luggage compartment

To reset the maximum opening height to full, repeat the process, but fully open the luggage compartment lid before pressing and holding the button.

LUGGAGE ANCHOR POINTS



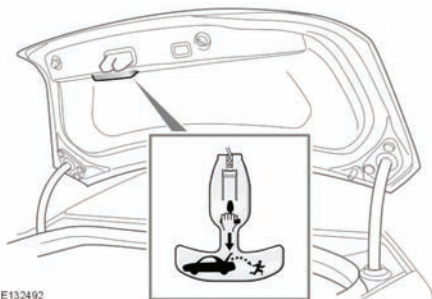
All items carried in the vehicle should be properly secured.

Four load securing points are provided in the rear luggage area to assist in safely securing items.

Note: A range of approved luggage retention accessories are available from your Dealer/ Authorised Repairer.

LUGGAGE COMPARTMENT EMERGENCY RELEASE

The mechanical luggage compartment release provides a means of escape in the event of someone being locked in the luggage compartment. Adults are advised to familiarise themselves with the operation of the release handle.



The release handle glows in the dark and is located on the inside of the luggage compartment lid. To open the luggage compartment from the inside, pull the handle while pushing the luggage compartment lid upwards.

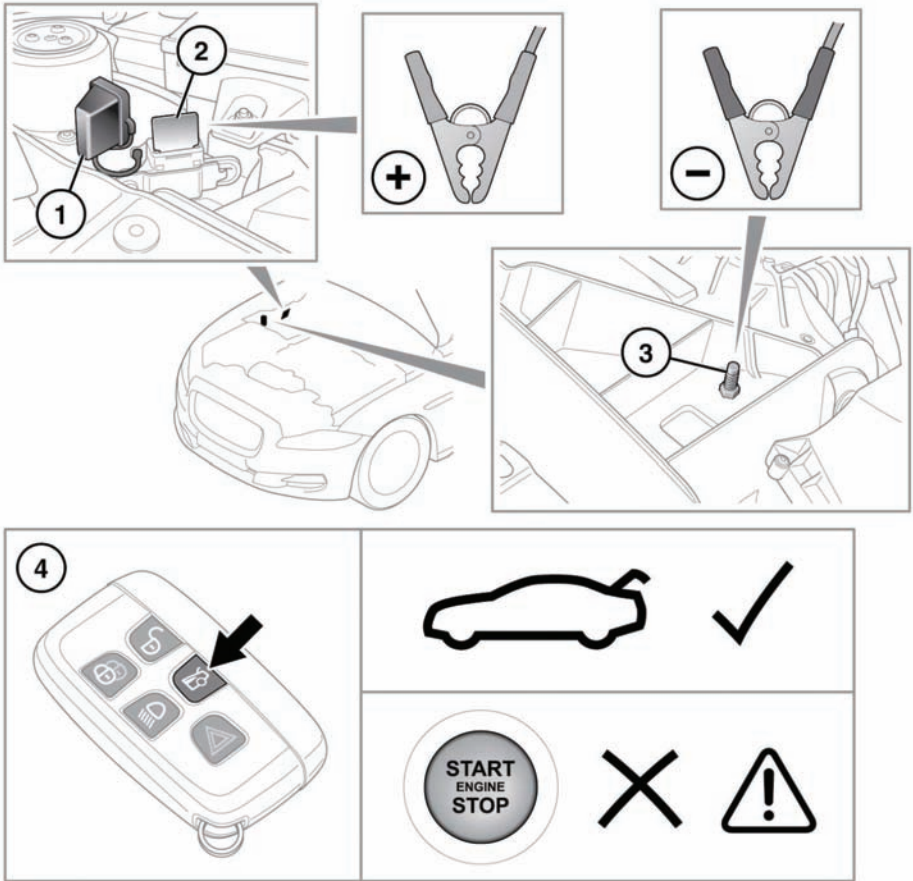
Return the handle to its stowage position after use.

LUGGAGE COMPARTMENT RELEASE WHEN BATTERY IS DISCHARGED

If the battery becomes discharged when the luggage compartment is shut, it will be necessary to supply power to the release circuit in order to open it.



Supplying power to the release circuit in the following manner may cause a fuse to blow. For this reason it is recommended that the following procedure is only carried out by suitably qualified persons.



E142724

With the bonnet open and the engine cover removed (see **187, FUSE BOX LOCATIONS**), connect jump lead cables to a suitable 12v supply. Then:-

1. Remove the cover from the positive terminal.
2. Attach the positive jump lead clamp to the positive terminal.
3. Attach the negative jump lead clamp to the earthing post.

4. Press the luggage compartment release button on the remote control.



Do not attempt to start the vehicle with power supplied in this way.