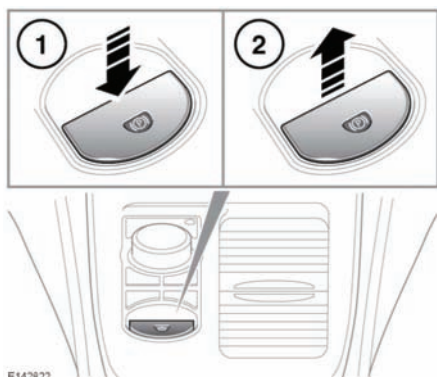


## ELECTRIC PARKING BRAKE (EPB)

❗ The parking brakes operate on the rear wheels. Therefore, secure parking of the vehicle is dependent on being on a hard and stable surface.



With the ignition turned on, press the brake pedal and press down on the EPB switch (1). This will release the electronic parking brake.

With the vehicle stationary, pull up the EPB switch (2) and release it to apply the parking brake. The parking brake warning lamp (see 50, **PARKING BRAKE (RED)**) illuminates to indicate that the parking brake is applied.

If the lever is operated when the vehicle speed is less than 3 km/h (2 mph) the vehicle will be brought to an abrupt stop. The stop lamps will not be illuminated.

The EPB will be applied automatically if the ignition is switched off and the vehicle speed is below 3 km/h (2 mph), unless **P** (Park) is selected. To prevent automatic operation, when the vehicle is stationary, press and hold the EPB switch in the release position. Within 5 seconds, switch off the ignition and continue to hold the EPB switch for a further 2 seconds.

❗ Driving the vehicle with the parking brake applied, or repeated use of the parking brake to slow the vehicle, may cause serious damage to the brake system.

In an emergency, with the vehicle travelling more than 3 km/h (2 mph), pulling on the EPB switch and holding gives a gradual reduction in the speed. The brake warning lamp will illuminate accompanied by a warning tone and a warning message in the message centre. The stop lamps will illuminate.

If the vehicle is stationary with the EPB applied and the transmission in **D** or **R**, pressing the accelerator will release the EPB and allow the vehicle to move off.

**Note:** Automatic release of the EPB is only possible when the driver's door is closed or the driver's seat belt is buckled.

The parking brake system gradually reduces the system load to assist a smooth drive away. If the reduction in system load causes the vehicle to move after a valid gear is selected, full load will be automatically re-applied to the parking brake. To override the load reducing feature of the EPB, manually apply the parking brake after selecting a gear.

At the start of a journey, EPB release times may be extended when changing from **P** or **N**. This is to allow for increased gear engagement times.

If the system detects a fault with the EPB, the amber brake warning lamp will illuminate accompanied by a message on the message centre.

If the system detects a fault while EPB is operating, the red parking brake warning lamp will flash, accompanied by a message in the message centre.

# Brakes

**Note:** *The red parking brake warning lamp will continue to be illuminated for at least ten seconds after the ignition has been turned off.*