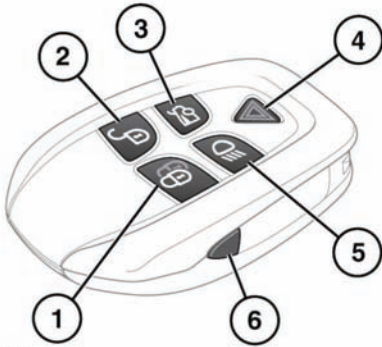


UNLOCKING THE VEHICLE



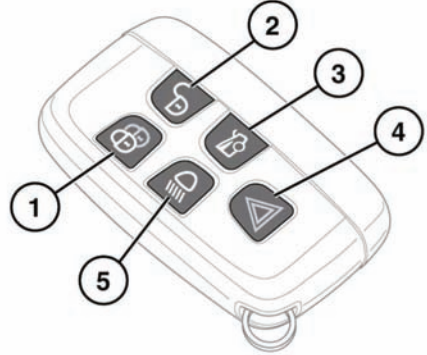
E136014



To prevent accidental or unauthorized operation, never leave children or animals unattended in the vehicle. The vehicle can be operated when the Smart Key is inside the vehicle.

Note: There are 2 designs of Smart Key, refer to the information which is relevant to the design of Smart Key supplied with the vehicle.

1. Lock: Press the lock button to secure the vehicle. The vehicle can be Single or Double locked. See **10, SINGLE LOCKING** and **10, DOUBLE LOCKING**.
2. Unlock: Your vehicle can be unlocked using either Single or Multi-point entry. When single point entry is enabled, the first press unlocks the driver's door and enables the other doors to be opened from the inside. The hazard warning lamps will flash twice to indicate that the vehicle is unlocked and the alarm has been disarmed. A second press unlocks the passenger doors and the luggage compartment. If multi-point entry is enabled, press briefly to unlock all the doors and luggage compartment and to disarm the alarm. The hazard warning lamps will flash twice to



indicate that the vehicle is unlocked and the alarm has been disarmed.

To change from Single to Multi-point entry (or vice versa), press both the lock and unlock buttons simultaneously for 3 seconds. The hazard warning lamps will flash twice to confirm the change.

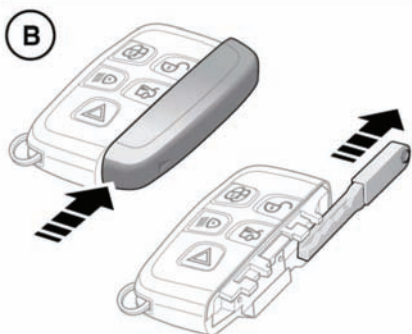
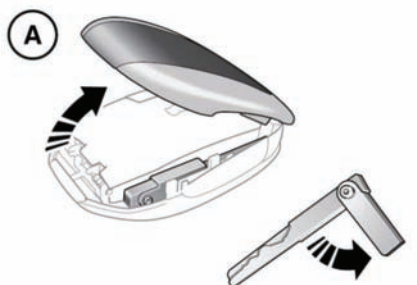
The change can also be achieved using the instrument panel menu.

3. Press to open the luggage compartment. The vehicle security system will remain active for the period the luggage compartment is open but the intrusion and inclination sensing systems will be inhibited. Door and bonnet security will remain active. The security system will re-arm to its previous state when the luggage compartment is closed.
4. Panic alarm. Press and hold for 3 seconds, or press 3 times within 3 seconds, to activate the horn, siren and hazard lamps. After 5 seconds, the alarm can be cancelled by pressing the panic alarm button for 3 seconds or by pressing the button three times within 3 seconds.

Entering the vehicle

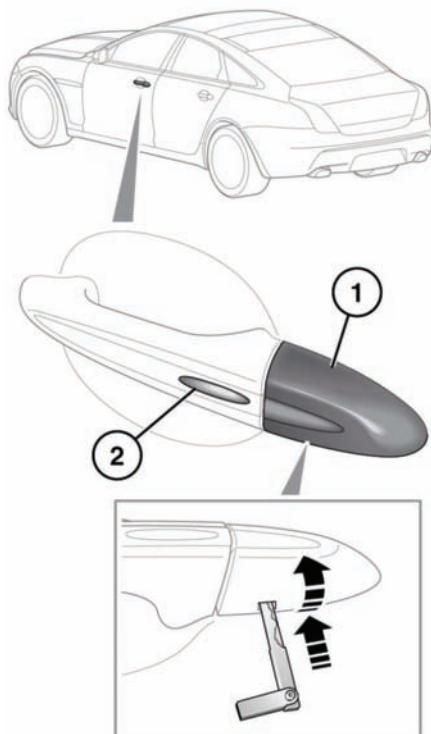
The emergency alarm will also be cancelled if the vehicle detects a valid Smart Key when the START/STOP button is pressed.

5. Press to switch on the approach illumination for up to 120 seconds. The illumination time is set using the exit delay switch. Pressing the button again or operating the starter button will turn the approach lamps off.
6. Emergency key blade release button.
The vehicle can be unlocked as follow:



E144914

- A. Press and hold the emergency key release button (6) while lifting the cover.
Remove and unfold the emergency key blade.
- B. Slide and remove the cover to expose the emergency key.



E136016

Insert the key blade into the slot in the door lock cover (1).

Carefully lift the key blade to lever the cover off the retaining clips.

Insert the key blade into the exposed lock to operate.

To lock: Ensure all the doors are closed, then turn the key blade towards the front of the vehicle and release. This will lock all doors but will not arm the alarm.