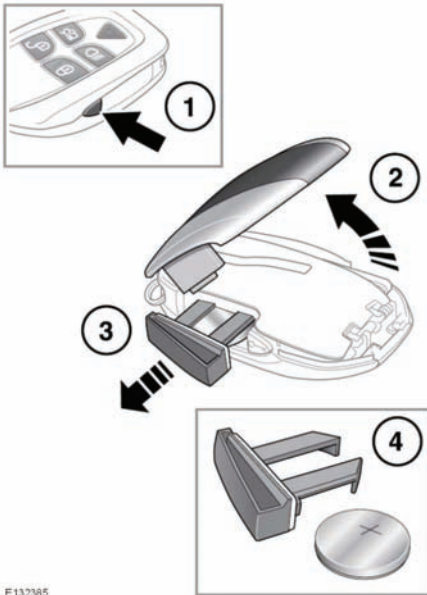


REMOTE KEY FOB BATTERY REPLACEMENT

Note: There are 2 designs of Smart Key, refer to the information which is relevant to the design of Smart Key supplied with the vehicle.

When the battery needs replacing, there will be a significant decrease in the effective range and the message **SMART KEY BATTERY LOW** is displayed in the message centre.

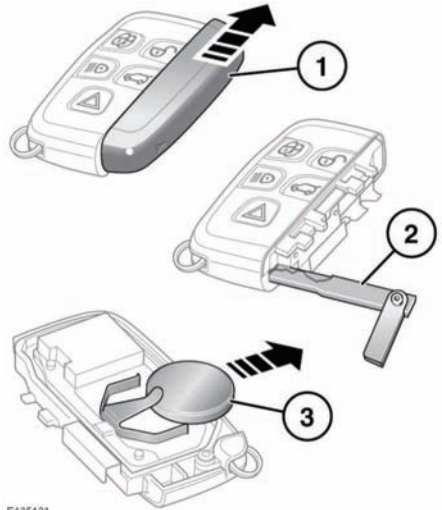


E132385

To replace the battery:

1. Press the release button on the side of the Smart Key.
2. Open the Smart Key cover.
3. Remove the battery drawer.
4. Remove the battery.
5. Fit a new CR2032 type battery (available from your Dealer/Authorised Repairer), with the positive (+) side upwards.

6. Replace the battery drawer and close the Smart key.



E135421

To replace the battery:

1. Slide the cover in the direction of the arrow until a click is heard. Remove the cover.
2. Use the emergency key blade to separate the Smart Key body.
3. Fit a new CR2032 type battery (available from your Dealer/Authorised Repairer), with the positive (+) side upwards.

Note: Avoid touching the new battery, as moisture/oil from your fingers can reduce battery life and corrode the contacts.

Refit the parts in the reverse order, ensuring that they click securely into place.



Battery disposal: Used batteries must be disposed of correctly, as they contain harmful substances. Seek advice on disposal from your Dealer/Authorised Repairer and/or your local authority.