



Fuel and refuelling


To close the filler flap, push the flap until latched closed.


Note: The filler flap will only be locked closed when the vehicle is centrally locked.

FUEL FILLER

 **When refuelling ensure that all windows, doors, and sunroof are fully closed, particularly if young children or animals are in the vehicle.**

 **Do not attempt to fill the tank to its maximum capacity. If the vehicle is to be parked on a slope, in direct sunlight or high ambient temperature, expansion of the fuel could cause spillage.**


 Check the fuel pump information carefully to ensure that you are putting the correct fuel into the vehicle.

 If the vehicle is filled with incorrect fuel, it is essential that you seek qualified assistance before you start the engine.

Fuel station pumps are equipped with automatic cut-off sensing to avoid fuel spillage. Ensure that the correct fuel type nozzle is fully inserted into the filler neck and fill the tank slowly until the filler nozzle automatically cuts-off the supply. Do not attempt to fill the tank beyond this point.

Note: Filling station pumps used for diesel commercial vehicles deliver fuel at a higher rate than normal. The higher fill rate can cause premature cut-off and may cause fuel spillage. Therefore, it is recommended that only standard light vehicle pumps are used.

DIESEL MISFUELLING PROTECTION DEVICE

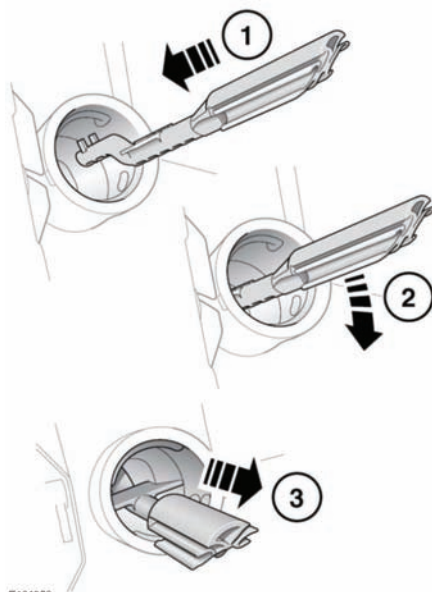
 **When the misfuelling device is activated it may cause fuel to be discharged from the filler neck.**

Note: It is the driver's responsibility to fill the vehicle with the correct fuel. The diesel misfuel protection device only reduces the risk of filling the vehicle with incorrect fuel.

If the narrow filler nozzle fitted to pumps delivering unleaded petrol is fully inserted into the filler neck, the misfuel protection device will activate.

Note: The filler spout on some fuel cans and older fuel pumps may trigger the misfuelling device.

When activated the yellow protection device will be visible inside the filler neck. It will prevent fuel flow into the tank. Before fuelling can continue with the correct fuel the device will need to be reset.



E134358

The reset tool is stored in the luggage compartment clipped onto the battery retaining bar.