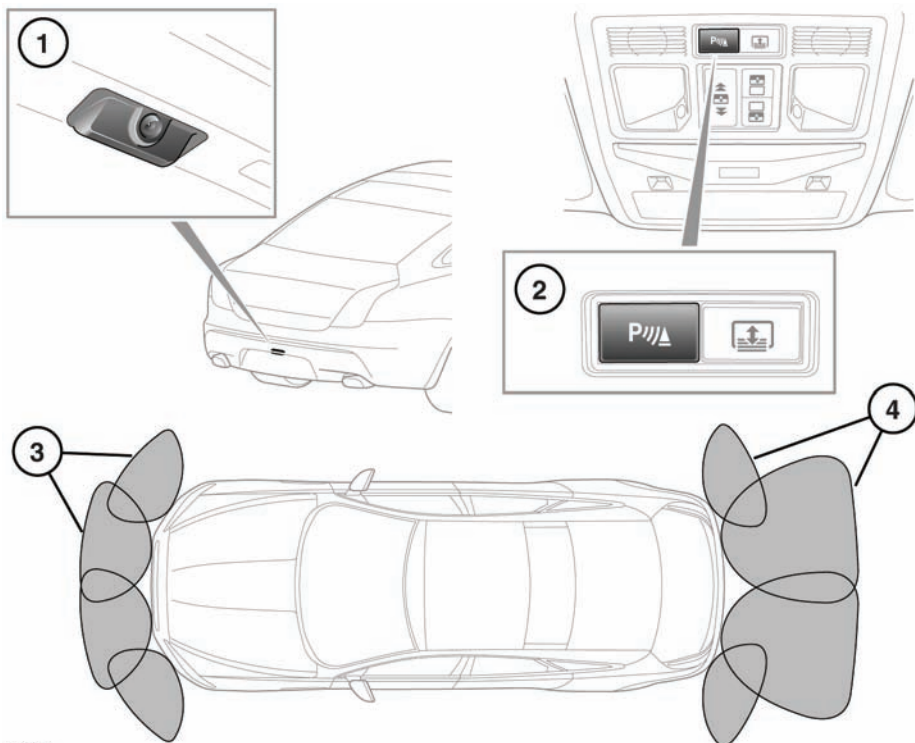


Parking aids

USING THE PARKING AID



E145395



Parking aids may not detect moving objects such as children and animals, until they are dangerously close. Always use extreme caution when manoeuvring.



Parking aid sensors may not detect some obstructions (e.g. narrow posts or small objects close to the ground).



If accessories are fitted to the rear of the vehicle, particular care must be taken when reversing. The rear sensors will only indicate the distance from the bumper to the obstacle.

1. Rear camera, see **86, REAR CAMERA**.
2. Parking aid switch. Press to turn on and off.
3. Front detection range.
4. Rear detection range.

When Reverse (**R**) is selected, the front and rear parking sensors are activated automatically, and the indicator on the parking aid switch will illuminate.

To manually activate the front sensors press the parking aid switch, the switch indicator will illuminate.

To turn off the system when active, press the switch, the switch indicator will extinguish.