

## PORTABLE MEDIA CONNECTIONS

Portable media devices can be connected to the front media hub located in the cubby box and the rear media hub located in the rear centre arm rest. Compatible portable devices include:

- USB mass storage devices (e.g. a memory stick). Devices must use FAT or FAT32 file format.
- iPod (iPod Classic, iPod Touch, iPhone and iPod Nano are supported - full functionality for older devices cannot be guaranteed). iPod Shuffle functionality cannot be guaranteed.
- Auxiliary device (personal audio, MP3 players, all iPods).

**Note:** Auxiliary devices have no touch screen control.

If you are connecting an iPod, mass storage or Bluetooth® device, use the touch screen to operate and search the device. Many of the controls are similar to those available for CD play.



Please disconnect your iPod when leaving the vehicle. Failure to do so may result in the iPod battery discharging.

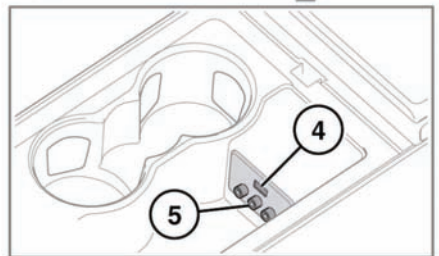
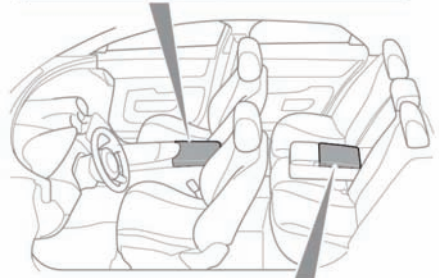
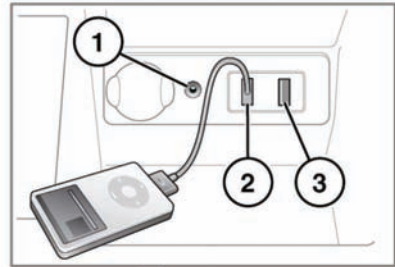
**Note:** The audio system will play MP3, WMA and AAC files.

To maximise playback quality, it is recommended that lossless compression is used for any media files on USB or iPod. Failing this, it is recommended that compressed files utilise a minimum bitrate of 192 kb/s (a higher bitrate is strongly recommended).

**Note:** iPod is a trademark of Apple Computer Inc., registered in the US and other countries.

**Note:** Some MP3 players have their own file system that is not supported by this system. To use your MP3 player, you must set it to USB Removable Device or Mass Storage Device mode. Only music that has been added to the device in this mode can be played.

## CONNECTING A DEVICE



E142991

1. 3.5 mm AUX socket.
2. iPod socket.
3. USB socket.
4. USB/iPod socket.
5. Rear media AV sockets.