






# Vehicle battery

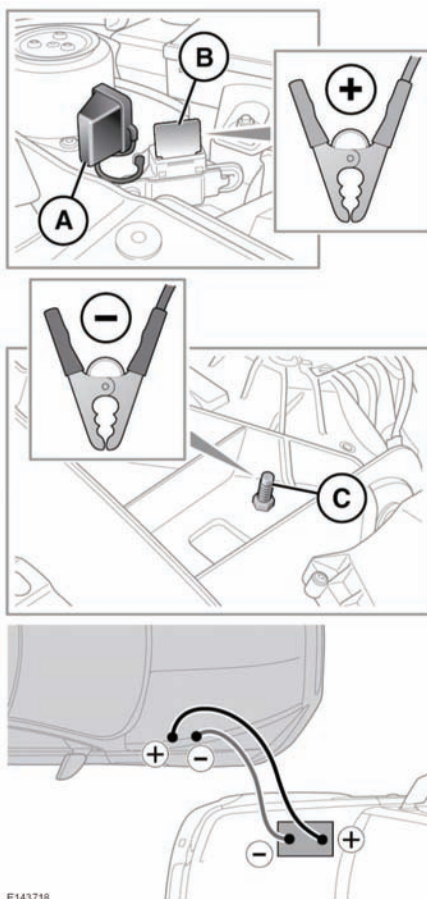
## BATTERY MONITORING SYSTEM (BMS)

If excessive battery discharge is occurring when the engine isn't running, the system will shut down non-essential electrical systems to protect battery power.

## CONNECTING JUMP LEADS

-  **Always wear appropriate eye protection when working with batteries.**
-  **Do not disconnect the discharged battery.**
-  **Do not connect a jump lead to the negative (-) terminal of the battery. Always connect to the recommended earthing point.**
-  **Ensure the bodywork of the donor and disabled vehicles do not touch.**
-  **Make sure both batteries are of the 12 volt type and that the jump leads have insulated clamps and are approved for use with 12 volt batteries.**

**Note:** Before connecting jump leads, ensure that the battery connections on the disabled vehicle are correct and that all electrical equipment has been switched off.



E143718

With the bonnet open and the engine cover removed (see **187, FUSE BOX LOCATIONS**):

1. Connect the positive jump lead (red) to the positive terminal on the donor vehicle's battery.
2. Remove the positive terminal cover (A) and connect the other end of the positive jump lead to the positive terminal (B).
3. Connect the negative jump lead (black) to the recommended jump starting earth point of the donor vehicle.