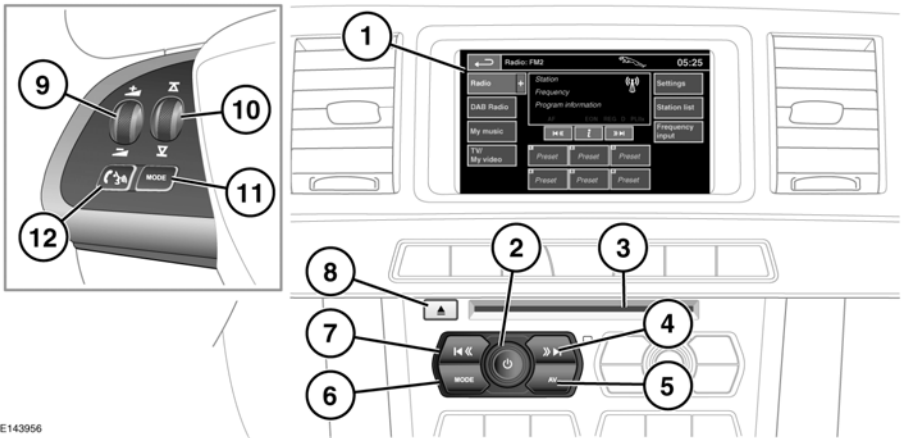


AUDIO/VIDEO CONTROLS



E143956

⚠ In the interest of safety, only operate, adjust or view the system when it is safe to do so.

⚠ Sustained exposure to high sound levels (greater than 85 decibels) can damage your hearing.

1. Touch screen.
2. On/off and volume control:
 - Press to switch the system on/off.
 - Rotate to adjust volume level.

Note: The audio system will switch off with the ignition. It can operate with the ignition off but needs to be switched on again. The system can remain on for approximately 10 minutes.
3. CD/DVD load and eject slot.
4. Seek up:
 - Short press to auto seek to the next radio preset, next preset TV channel, next DVD chapter, or next track on chosen audio source.
 - Long press to manually seek to the next radio station or to scan forwards through the current audio source track.

With manual seek mode activated, further short presses will change the radio frequency in single increments. A further long press will scan forwards through the current waveband until the button is released.

5. **AV:** Press to access audio/video menu.
6. **MODE:** Press repeatedly to scroll through all audio/video sources.
7. Seek down:
 - Short press to auto seek to the previous radio preset, previous preset TV channel, previous DVD chapter, or previous track on chosen audio source.
 - Long press to manually seek to the previous radio station or to skip backwards through the current audio source track.
8. Eject: Press to eject a CD/DVD.
9. Rotate to adjust volume.