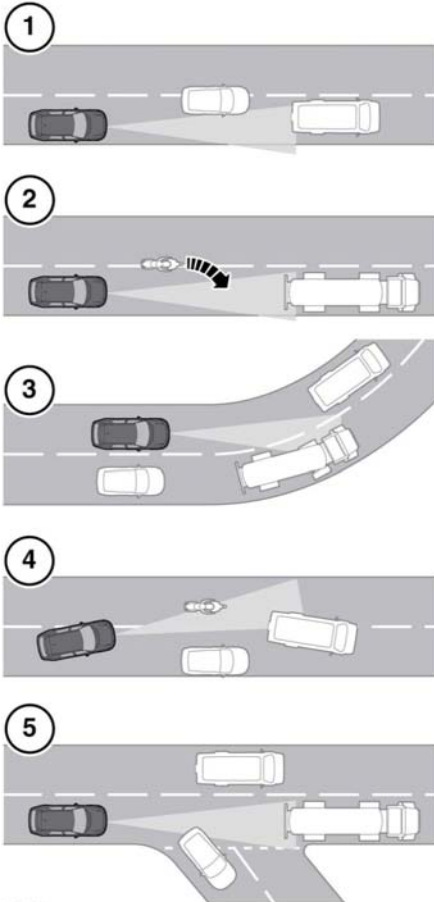


DETECTION BEAM ISSUES



E142911

Detection issues can occur:

1. When driving on a different line to the vehicle in front.
2. When a vehicle edges into your lane. The vehicle will only be detected once it has moved fully into your lane.
3. There may be issues with the detection of vehicles in front when going into and coming out of a bend.

4. When moving around a stationary vehicle. This may cause uncertainty as to which vehicle should be followed.
5. When the vehicle ahead turns out of your lane. This may cause uncertainty as to which vehicle should be followed.

In these situations ACC may operate unexpectedly. The driver should stay alert and intervene if necessary.

ACC MALFUNCTION

If a malfunction occurs during operation of the system in cruise or Follow mode, the ACC system will switch off and cannot be used until the fault is cleared. The message **DRIVER INTERVENE** appears briefly and is then replaced by the message **CRUISE NOT AVAILABLE**. If malfunction of the ACC or any related system occurs at any other time, the message **CRUISE NOT AVAILABLE** will be displayed. It will not be possible to activate the ACC system in any mode.

Accumulations of dirt, snow or ice on the sensor or cover may inhibit ACC operation. Fitting of a vehicle front protector or metallised badges may also affect ACC operation.

The ACC system relies on its radar to detect objects and constantly scans ahead. If the radar detects no objects ahead in ACC or Follow mode, then the ACC will be deactivated, the audible alarm sounds and the message **DRIVER INTERVENE** displays briefly. The message **ACC SENSOR BLOCKED** will then be displayed.

The same messages may also be displayed while driving on open roads with few objects for the radar to detect.