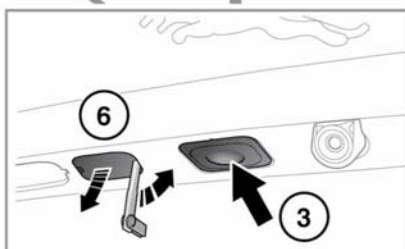
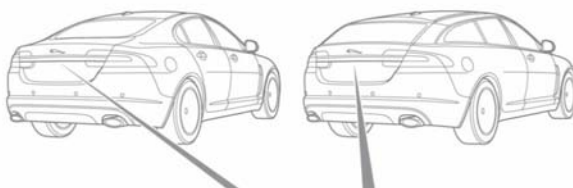
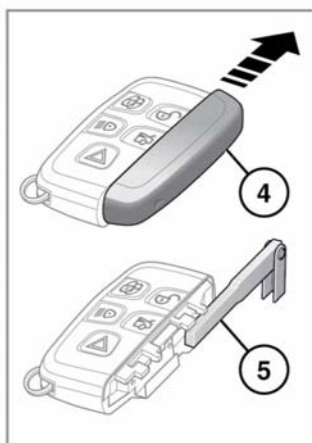
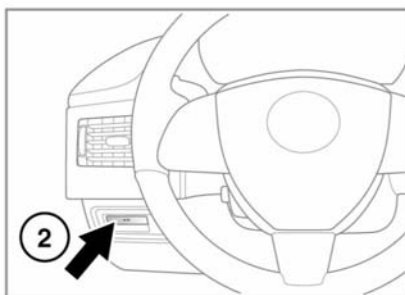


OPENING AND CLOSING THE LUGGAGE COMPARTMENT

- ❗ If the luggage compartment is opened after the driver and passenger doors are locked, ensure that the Smart Key remains outside the vehicle when it is closed again.
- ❗ If the Smart Key is inadvertently left inside the luggage compartment and the vehicle is locked and alarmed, a warning sounds and the compartment will re-open after 3 seconds.
- ❗ The Smart Key may not be detected if it is placed within a metal container or if it is shielded by a device with a back-lit LCD screen, such as a smart phone, laptop (including laptop bag), games console etc.
- ❗ Do not repeatedly attempt to close the luggage compartment after it automatically re-opens, or the latch may overheat. If the cause of the automatic re-opening cannot be determined: Unlock all the doors and the luggage compartment with the Smart Key; make sure that all doors, the bonnet and the luggage compartment are closed properly; lock the vehicle again with the Smart Key.

Luggage compartment



E143948

To open the luggage compartment or tailgate:

1. Press the Smart Key button.
2. Press the interior release button.
3. Press the exterior release button if the vehicle is not locked.
4. To open the luggage compartment or tailgate with the emergency key blade, first hold the Smart Key then slide and remove the cover to expose the emergency key.
5. Remove the emergency key blade.

6. Use the blade to remove the cap from the trim panel above the license plate. Insert the emergency key blade into the lock and turn clockwise to open the luggage compartment.

If the security system is armed, the alarm will sound when the luggage compartment is opened. To deactivate the alarm, press the vehicle unlock button on the Smart Key or press the engine START/STOP button with the Smart Key inside the vehicle.

The Sportbrake luggage area roller blind can lift and close with the tailgate movement.