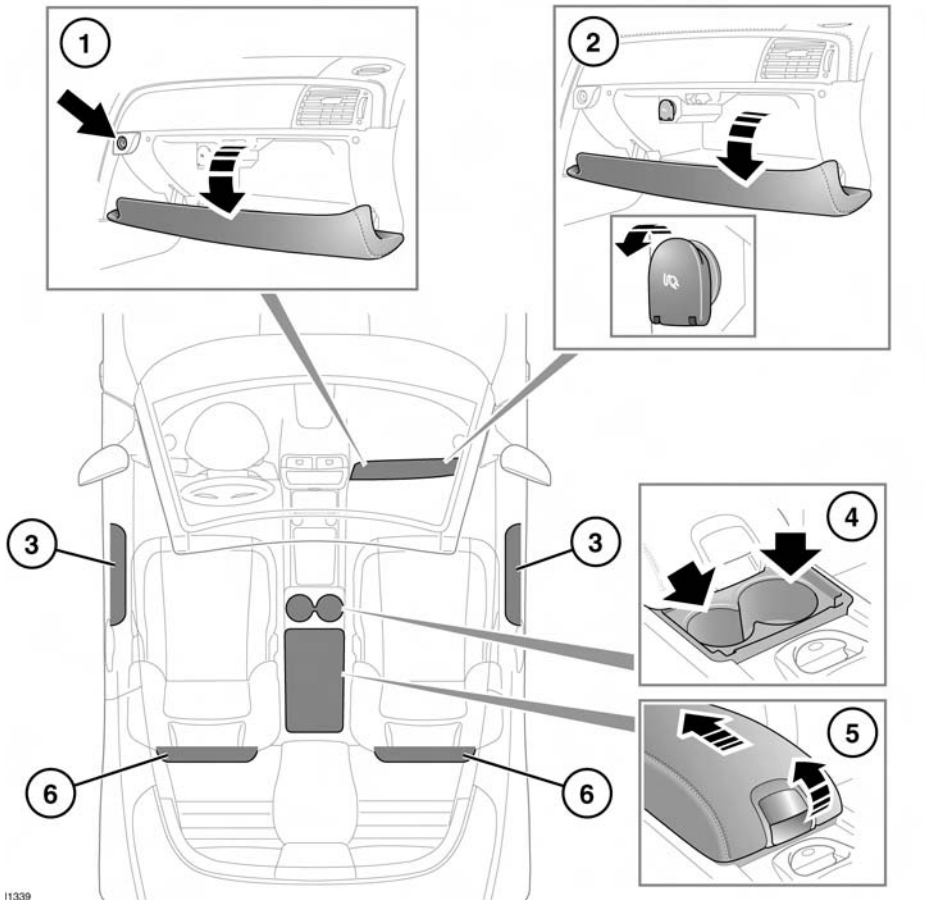


Storage compartments

STORAGE COMPARTMENTS



1. Glove box: Open using the glove box release (arrowed).
Note: When Valet mode is selected the glove box release is disabled.
2. Auxiliary power sockets.

4. Cup holder: To access, pull the catch on the center cubby box lid upwards and slide the lid/armrest rearwards.
5. Cubby box.
6. Map pockets.

NOTICE

Only use approved accessories.

3. Front door stowage.