

Garage door opener

GARAGE DOOR TRANSCIVER

⚠ WARNING

Do not use the transceiver with any garage door opener that lacks the safety stop and reverse feature as required by safety standards.

⚠ WARNING

When programming the transceiver to a garage door opener or entry gate, ensure the area is clear. This will prevent potential personal injury or vehicle damage as the gate or garage door will activate during the programming.

NOTICE

This device may suffer from interference if operated in the vicinity of a mobile or fixed station transmitter. This interference is likely to affect the hand-held transmitter as well as the in-car transceiver.

The door transceiver is located in roof console. It can be programmed to transmit the radio frequencies of up to three different transmitters, which can be used to operate garage doors, entry gates, home lighting, security systems or other radio frequency operated devices.

Although this section mainly describes the procedures for a garage door opener, it equally applies to the previously mentioned applications.

In some countries, this feature is also known as the HomeLink® Universal Transceiver. The transceiver radio frequency approval numbers for the USA and Canada are shown below:

USA - FCC: K8597R315.

Canada - CAN: 2145 101 790A.

For further information, see **50, INFORMATION AND ASSISTANCE.**

United States of America

This device complies with part 15 of the FCC Rules. Operation is subject to the following two conditions:

- (1) This device may not cause harmful interference, and
- (2) this device must accept any interference received, including interference that may cause undesired operation.

Canada

This device complies with Industry Canada Standard IC - RSS-210: Operation is subject to the following two conditions:

- (1) this device may not cause interference, and
- (2) this device must accept any interference, including interference that may cause undesired operation of the device.

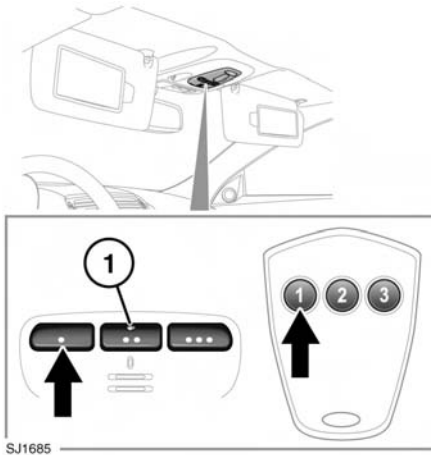
BEFORE PROGRAMMING

NOTICE

When programming a device that may require you to press and re-press the hand-held transmitter (cycle), unplug the device during the cycling process to prevent possible motor failure.

For best results, fit a new battery to the hand-held transmitter of the garage door opener (or other device) before programming. If your garage door opener receiver (located in the garage) is equipped with an antenna, ensure that the antenna is hanging straight down.

PROGRAMMING



Ensuring that the engine is switched off:

1. Ensure that the ignition system is on.
2. Hold the end of the original garage door opener hand-held transmitter 2 to 6 inches (50 to 150 mm) away from the transceiver in the roof console, keeping the indicator lamp (1) in view.
3. Using both hands, simultaneously press and hold both the chosen transceiver button on the roof console, as shown, and the hand-held transmitter button. Keep both buttons pressed. The indicator lamp will flash slowly at first and then change to a fast flash. When the indicator lamp flashes rapidly, release both buttons. The rapid flashing lamp indicates successful programming.
4. If, after 60 seconds, the indicator lamp does not flash rapidly, release both the transceiver and the hand-held transmitter buttons and repeat the procedure starting with Step 2. Position the hand-held transmitter at a different angle and/or distance.

5. Press and hold the programmed garage door opener button and observe the indicator lamp.
 - If the indicator is continuous, programming is complete and your device should operate when the garage door opener button is pressed and held for approximately 1 to 2 seconds and then released.
 - If the indicator lamp blinks rapidly for 2 seconds and then illuminates continuously, proceed with the following programming instructions for rolling code device equipment.

TO ERASE ALL PROGRAMMING

For first time programming, ensure that the engine is switched off:

1. Ensure that the ignition system is in convenience mode, see **10, CONVENIENCE MODE**.
2. Press and hold the two outer buttons on the transceiver in the roof console. Keep the buttons pressed until the indicator lamp begins to flash (this will take approximately 20 seconds), then release the buttons.

All memories in the garage door opener have now been cleared.

Note: Do not perform this procedure when programming the additional garage door opener buttons.

Garage door opener

ROLLING CODE DEVICE EQUIPMENT PROGRAMMING

Note: The assistance of a second person, may make the following steps quicker and easier. Once the button has been pressed there are only 30 seconds in which to complete Step 3.

1. At the garage door opener receiver (motor head unit) in the garage, locate the learn or smart button/switch.

Note: The name of the button or switch may vary between manufacturers.

2. Press and release the learn or smart button.
3. Return to the vehicle and firmly press and hold the programmed garage door opener button for 2 seconds and release.
4. Repeat the press, hold, release sequence three times to complete the programming process.

The garage door opener in the roof console should now activate the rolling code device.

REPROGRAMMING A SINGLE GARAGE DOOR OPENER BUTTON

To program a device to a previously programmed button:

1. Press and hold the desired pre-programmed garage door opener button for at least 20 seconds, but no longer than 30 seconds, until the indicator lamp begins to flash.
2. Without releasing the overhead console button, position the hand-held transmitter approximately 2 to 6 inches (50 to 150 mm) away from the transceiver in the roof console, keeping the indicator lamp in view.
3. Carry out Step 3 of **Programming**.

ENTRY GATE PROGRAMMING

The technology of some entry gates requires you to press and re-press (cycle) the hand-held transmitter button every 2 seconds during programming.

Continue to press and hold the desired overhead console button while you cycle your hand-held transmitter until the indicator lamp flashes rapidly.

INFORMATION AND ASSISTANCE

NOTICE

For security purposes, it is recommended that all programmed transceiver buttons are erased before the vehicle is sold or disposed of.

For information on the range of available compatible products or accessories, or for assistance, you should contact your Dealer/Authorized Repairer.

If you would like additional information on the Homelink Universal Transceiver, compatible products or to purchase other accessories, contact your Dealer/Authorized Repairer or you can also contact the Homelink helpline on 1-0800-355-3515 or on the web at:

www.homelink.jci.com.

Note: *Keep the original transmitter for future use or programming procedures if, for example, you purchase a new vehicle.*

Note: *The manufacturer is not responsible for any radio or TV interference caused by unauthorized modifications to this equipment. Such modifications could void the user's authority to operate the equipment.*