

PORTABLE MEDIA

⚠ WARNING

Do not adjust the auxiliary device or allow the device to distract the driver while the vehicle is moving. Driver distraction can lead to accidents causing serious injury or death.

⚠ WARNING

Make sure that any auxiliary devices are stored securely while the vehicle is in motion. Any loose objects are potential hazards during sudden maneuvers, emergency braking situations or accidents.

NOTICE

Do not place any item connected to the auxiliary input socket or the auxiliary power socket on the seats, carpets or other upholstery. The heat generated by these devices may cause damage to the vehicle and, in some cases, fire.

NOTICE

Read the manufacturer's instructions for any device, before it is connected to the audio system.

PORTABLE MEDIA CONNECTIONS

Portable media devices can be connected to the media hub located in the cubby box. Compatible portable devices include:

- **USB** mass storage devices (e.g. a memory stick).
- **iPod.**

The following iPod's are supported:

- iPod (generation 3-5).
- iPod Mini.
- iPod Nano (generation 1-3).
- iPod Photo.
- iPod Classic.

Note: *iPod is a trademark of Apple Inc., registered in the USA and other countries.*

If you are connecting an iPod, mass storage device, you can use the touch screen to operate and search the device. Many of the controls are similar to those available for CD play.

Note: *The audio system will play MP3, WMA, WAV and AAC files.*

To maximise playback quality, it is recommended that lossless compression is used for any media files on USB or iPod. Failing this, it is recommended that compressed files utilize a minimum bitrate of 192 kb/s (a higher bitrate is strongly recommended).

Note: *Some MP3 players have their own file system that is not supported by this system. To use your MP3 player, you must set it to USB Removable Device or Mass Storage Device mode. Only music that has been added to the device in this mode can be played.*

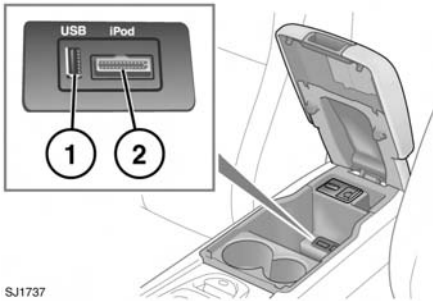
CONNECTING A DEVICE

NOTICE

Always refit the rubber cover when a portable device is not plugged in. This prevents damage to the sockets. The cover is not waterproof.

NOTICE

Please disconnect your iPod when leaving the vehicle. Failure to do so may result in the iPod battery discharging.



Connect the device into the appropriate socket.

NOTICE

Do not plug non-audio devices into the USB port.

1. USB port.

When a USB device is connected, playback will continue from the point it was last played.

2. iPod input.

A dedicated iPod lead is supplied for the iPod port. Plug in your iPod with the usual care necessary to protect the connector pins from damage.

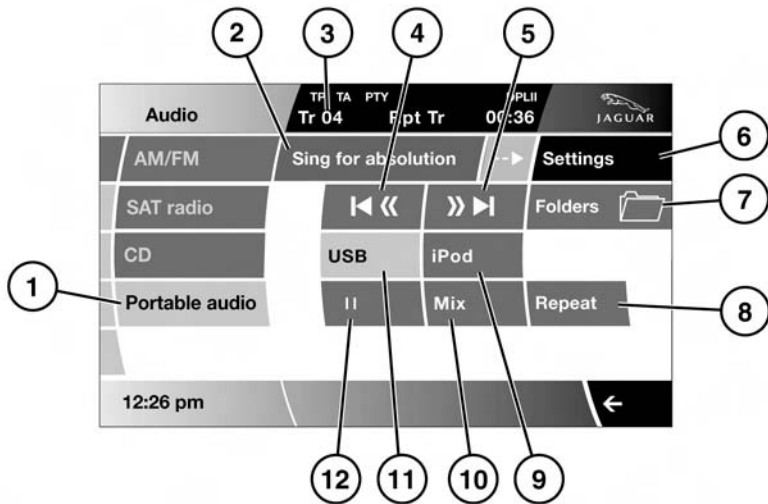
When an iPod is connected, playback will continue from the point at which it was last playing, provided the iPod battery is in a good state of charge.

Note: You cannot use a USB hub to connect more than one USB device to the audio unit.

Note: Devices connected to the USB ports will be charged, but devices that are fully discharged will not play.

Note: Options such as **Repeat** and **Mix** relate to the device currently playing, they will not apply to any subsequent device.

PORTABLE MEDIA CONTROLS



SJ1756

⚠ WARNING

Do not adjust the touch screen controls, or allow the system to distract the driver, while the vehicle is moving. Driver distraction can lead to accidents, causing serious injury or death.

1. **Portable audio:** Select to view the portable audio menu.

Note: *Sound quality and volume levels available from devices connected to the auxiliary input may vary widely.*

2. Display of information about the current track, including track title, artist, album and genre. Touch the adjacent arrow to toggle through the information which is displayed as a pop-up.

If there is no information available, the screen will display the text **No entry**.

3. Display shows: Track number (Tr 02), chosen function (Rpt Tr, Mix all etc.) and track elapsed run-time (00.00 or Paused).

4. Skip/Scan backward:

- Touch and release to skip to the previous track.
- Touch and hold to scan backwards through the current track. Playback will resume when the soft key is released.

5. Skip/Scan forward:

- Touch and release to skip to the next track.
- Touch and hold to scan forwards through the current track. Play will resume when the soft key is released.

6. **Settings:** Touch to view portable media settings.

- **Sound and Bal/Fade:** see **104, AUDIO SETTINGS**.
- **Options:** Touch to select:
Traffic: Activate/deactivate traffic announcements (TA).

Portable audio text:

Activate/deactivate playback information.

Page jump helps you to navigate a very long list of items by setting the number of items scrolled through when a double-arrow page scroll button is selected.

For example, if you select **10** under **Page jump**, then 10 x 4 (40) items will scroll past each time you select a page scroll button.

7. Folders:**USB mode:**

- Select to view the folder list on the device.
- Select the folder name to display the tracks in that folder.
- Select a track to start playback of that track. Play will continue through the remainder of the tracks in the folder.

iPod mode.

- Select to display all search methods on the iPod.

8. Repeat:

In **USB** or **iPod** mode.

- Briefly touch to repeat the current track.
- Touch and hold (2 seconds) to repeat all tracks in the current folder.
- Touch **Repeat** again to cancel and return to normal play back.

9. iPod: Touch to select the iPod device when both a USB and iPod device are both connected.**10. Mix:**

- Briefly touch to play random tracks from the USB folder or iPod playlist. A **Mix folder** message is displayed.
- Touch and hold (2 seconds) to play all tracks from the USB folders or iPod playlist in a random sequence. **Mix all** is displayed.
- Touch and release again to cancel **Mix** mode.

11. USB: Touch to select the USB device when both a USB and iPod device are both connected.**12. Pause/Play:** Select to pause playback. Select again to resume playback.**CONNECTING MULTIPLE DEVICES****NOTICE**

Do not plug non-audio devices into the USB port.

You can connect multiple devices simultaneously to the portable media interface and switch between them using the touch screen. Select **iPod (9)** or **USB (11)**, to switch between modes.

The device docked first will remain the active device until you choose to change.

If, after changing to the newly-docked device, you change back to the first device, play will resume at the point you left it (USB and iPod only).

Note: *You cannot use a USB hub to connect more than one USB device to the audio unit.*

Note: *Devices connected to the iPod and USB ports will be charged, but devices that are fully discharged will not play.*

Note: *Options such as Repeat and Shuffle relate to the device currently playing, they will not apply to any subsequent device.*