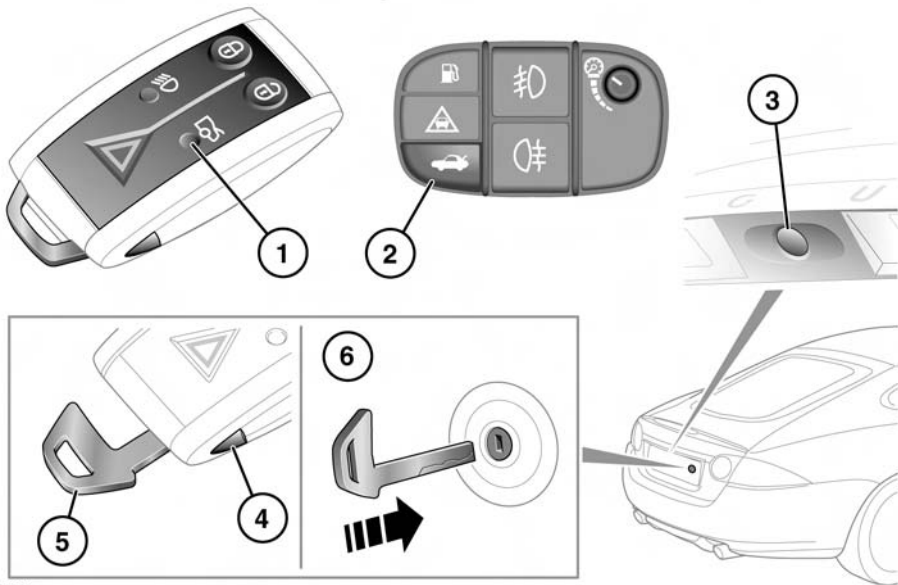


Luggage compartment

OPENING AND CLOSING THE LUGGAGE COMPARTMENT



SJ11089

WARNING

(Coupe only): Extreme care must be taken when closing the luggage compartment lid when passengers are travelling in the rear seats.

WARNING

Locate heavy loads in the luggage compartment towards the front of the vehicle and secure them to stop them sliding. Loose items can be a hazard.

WARNING

Do not drive with the luggage compartment open as exhaust fumes can be drawn into the passenger compartment.

NOTICE

If the luggage compartment is opened after the driver and passenger doors are locked, ensure that the Jaguar Smart Key remains outside the vehicle when it is closed again.

NOTICE

The Smart Key may not be detected if it is placed within a metal container or if it is shielded by a device with a back-lit LCD screen, such as a smart phone, laptop (including laptop bag), games console etc.

Note: To prevent permanent damage to the luggage compartment trim, it is advisable to distribute luggage weight evenly over the entire luggage floor area.

The luggage compartment can be opened using the appropriate button (1) on the Smart Key, or via keyless entry (see **10, KEYLESS ENTRY**). Provided the vehicle is not locked, the luggage compartment can also be opened using either the interior release button (2) or the exterior release button (3).

The emergency key blade in the Smart Key can also be used to open the luggage compartment, as follows:

1. Press and hold the release button (4) on the Smart Key, then remove the emergency key blade (5).
2. The emergency key lock is located to the right of the rear license plate.

Insert the emergency key blade into the lock (6) and turn clockwise to open the luggage compartment.

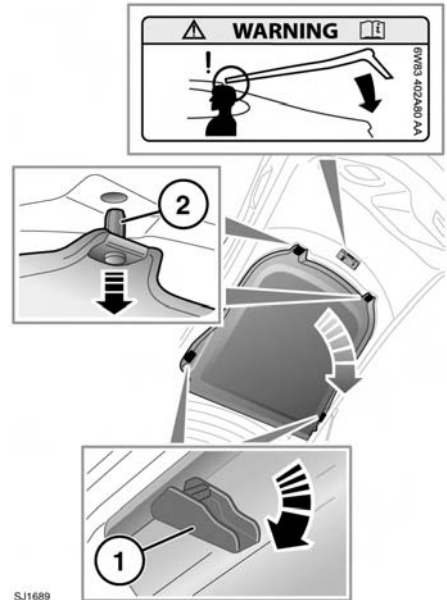
If the security system is armed, the alarm will sound when the luggage compartment is opened. To deactivate the alarm, press the vehicle unlock button on the Smart Key or press the engine starter button with the Smart Key inside the vehicle.

Note: If the Jaguar Smart Key is inoperable, the alarm can be deactivated by docking the Smart Key into the starter control unit.

LUGGAGE COVERS (Coupe only)

NOTICE

It is not advisable to place items on the luggage cover.



To remove the luggage cover: Release the 2 latches (1) and slide the cover downwards and forwards, so that the 2 rear locating pegs (2) are disengaged. This will allow the cover to be removed.

To refit the luggage cover: Locate the 2 rear pegs (2). Then, from the side of the vehicle, support the luggage cover and fit one of the front catches (1). Press it firmly through the cover and close the catch. Repeat this procedure on the other side of the vehicle.