

Wheel changing

WHEEL CHANGING SAFETY

Before raising the vehicle, or changing a wheel ensure that you read, and comply with the following warnings.

⚠ WARNING

Always find a safe place to stop, off the highway and away from traffic.

Always switch on the hazard warning lamps to alert all traffic of the obstruction.

Apply the parking brake, and engage Park (P). Turn the engine off and remove the Smart Key from the vehicle. Failure to do so can result in unexpected movement of the vehicle causing serious injury or death.

⚠ WARNING

Ensure that all passengers, and animals, are out of the vehicle and in a safe place away from the highway.

Always place a warning triangle at a suitable distance behind the vehicle, facing towards oncoming traffic.

⚠ WARNING

Ensure that the vehicle and jack are both on firm level ground. Do not jack the vehicle if it is over a metal grating or manhole cover.

Ensure that the front wheels are in the straight ahead position.

⚠ WARNING

When one rear wheel is lifted off the ground the selection P (Park) position will not prevent the vehicle from moving and possibly slipping off the jack as the park brake only operates on the rear wheels. Use the wheel chock when jacking the vehicle.

Always chock the wheel diagonally opposite the wheel to be changed, using the wheel chock supplied in the tool kit. Chock the front of a front wheel, or the rear of a rear wheel.

If jacking the vehicle on a slight slope is unavoidable, place chocks on the downhill side of the two opposite wheels. An additional chock will be needed.

⚠ WARNING

Remove the spare wheel prior to jacking the vehicle, to avoid destabilizing the vehicle when raised.

⚠ WARNING

Never place anything between the jack and the ground, or the jack and the vehicle.

Do not attempt to raise the vehicle unless the jack head is fully engaged in the jacking point. Only jack the vehicle using the approved jacking points.

Always position the jack from the side of the vehicle, in line with the appropriate jacking point.

Always use the complete jacking lever assembly throughout the tire changing process, to minimize any chance of accidental injury.

⚠WARNING

Never work beneath the vehicle with the jack as the only means of support - use vehicle support stands.

Take care when lifting the spare wheel, and removing the punctured wheel. The wheels are heavy, and can cause injuries if not handled correctly.

Take care when loosening the wheel nuts. The wheel brace may slip off if not properly attached, and the wheel nuts may give way suddenly. Either unexpected movement may cause an injury.

Always ensure replacement tires have the correct rating and specifications (e.g. load index, size, speed rating) for your vehicle.

⚠WARNING

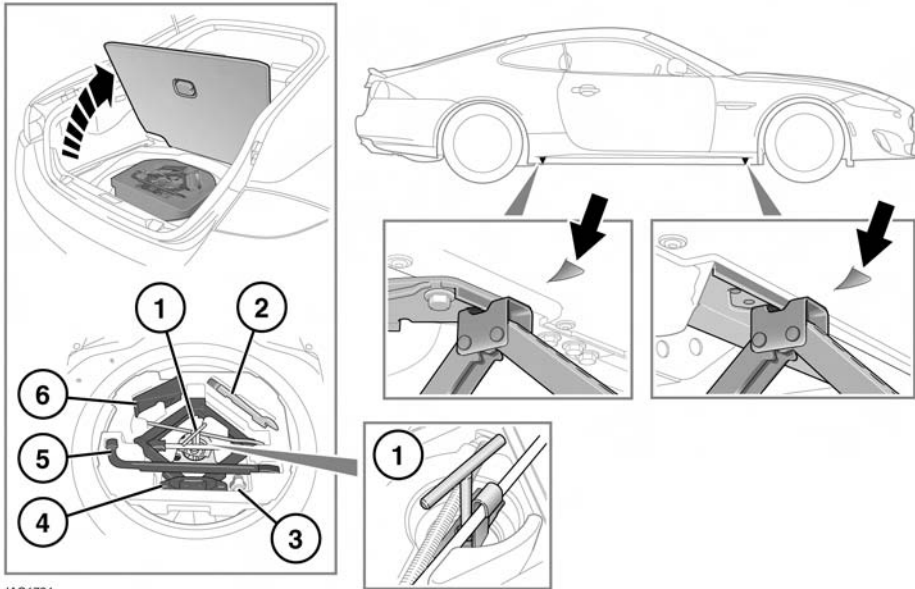
Do not start or run the engine while the vehicle is supported only by a jack.

⚠WARNING

After wheel changing, always secure tools, chocks, jack and replaced wheel in their correct storage positions. Such objects, if not properly stowed, can become flying missiles in a crash or rollover, potentially causing injury or death.

Wheel changing

WHEEL CHANGING



JAG1724

Before raising the vehicle slacken but do not remove the wheel nuts.

1. Spare wheel retaining T-bar.
2. Towing eye.
3. Locking wheel nut adaptor.
4. Jack. Observe the instructions printed on the jack.
5. Wheel brace.
6. Wheel chock.

Note: On vehicles that only have a tire repair kit the tool kit is located on the left-hand side of the luggage compartment beneath the carpet.

To remove the spare wheel, unscrew and remove the T-bar (1) through the center of the tool tray. Remove the tool tray.

There are four jacking points on the underside of the floor. Two indented, triangular indicators are provided on each sill cover. These indicate the location for the jack.

Carefully raise the vehicle by turning the jack handle. Stop jacking the vehicle when the tire just clears the ground. Minimum tire lift gives maximum vehicle stability.

Fit the spare wheel and loosely secure with the wheel nuts.

Note: To remove the center badge use the plastic tipped end of the wheel nut wrench handle, push the center badge from its housing from the inside of the wheel.

TEMPORARY USE SPARE WHEEL

Observe the following warnings before using the wheel:

⚠ WARNING

When a temporary use spare wheel is fitted, drive with caution and replace with the specified wheel and tire as soon as possible.

Do not fit more than one temporary use spare wheel and tire assembly at any one time.

⚠ WARNING

Always adhere to the instructions given on the temporary use spare wheel warning label. Failure to comply can be dangerous.

⚠ WARNING

The temporary use spare wheel must be inflated to 60 psi (4.2 bar, 420 kPa) and cannot be repaired.

⚠ WARNING

Temporary use spare wheel, maximum speed is 50 mph (80 km/h).

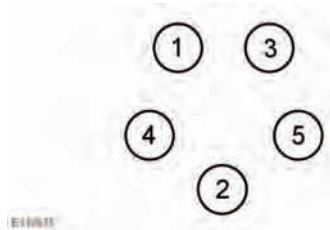
⚠ WARNING

DSC must be on when the temporary use spare wheel is in use.

LOCKING WHEEL NUTS

Note: A code number is stamped on the side of the locking nut. Ensure the number is recorded on the Security Card supplied with the literature pack. Quote this number if a replacement is required. Do not keep the Security Card in the vehicle.

TIGHTENING THE WHEEL NUTS



Using the wheel nut wrench, lightly tighten the wheel nuts alternately using the sequence shown in the illustration.

Lower the jack, then tighten the wheel nuts fully, in the same sequence shown. Do not overtighten by using foot pressure or extension bars on the wheel nut wrench.

At the earliest opportunity have the wheel nuts tightened with a torque wrench to 92 lb.ft (125 Nm).

This torque must not be exceeded.