

Navigation system

THE NAVIGATION SYSTEM

Navigation instruction is by map and turn information displayed on the touch screen and can be complemented by voice guidance if required. The system uses signals from Global Positioning System (GPS) satellites combined with information from vehicle sensors and the Navigation DVD, to establish the true vehicle position.

Using this combination of data sources the vehicle navigation computer enables you to plan and follow a route map to your desired destination.

The touch screen is used to control navigation via menus, text screens and map displays.

The requirements of national Road Traffic Regulations always apply.

Observation of traffic signs and local traffic regulations always take priority.

GPS signals may occasionally be interrupted due to physical barriers such as tunnels and roads under raised highways.

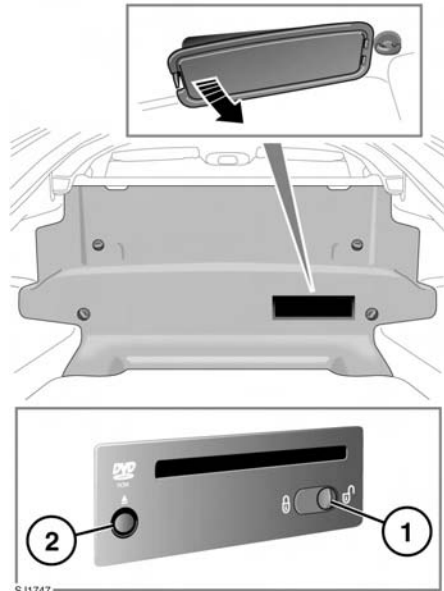
However, direction and speed sensors on the vehicle will minimize any adverse effect on the navigation system. Normal operation will resume once the obstruction has been passed.

Under certain conditions it is possible for the vehicle position shown on screen to be incorrect. This may happen when:

- Driving on a spiral ramp in a building.
- Driving on or beneath elevated roads.
- Two roads are close and parallel.
- The vehicle is transported to another destination.
- After the vehicle is rotated on a turntable.
- After vehicle battery disconnection.

LOADING THE NAVIGATION DVD

Note: Before using the navigation system, ensure that the DVD that contains the correct regional mapping information is loaded in the navigation DVD player.



The navigation DVD player is located in the luggage compartment.

- Turn on the vehicle ignition.
- Remove the trim panel (as shown) to access the DVD player.
- Move the slider to the unlock position (1).
- Press the unload button (2) to eject a DVD, if one is installed in the DVD player.
- Load the correct Navigation System DVD with the printed side upwards. Do not allow moisture or foreign objects to enter the slot.
- Move the slider to the locked position.

NAVIGATION SETUP

WARNING

In the interests of safety, only operate, adjust or view the system when it is safe to do so.

WARNING

The navigation system is not a substitute for driving safely, with due care and attention. Drivers should not assume that a feature will correct errors in judgement in driving. The navigation system may not function properly in all circumstances.

WARNING

Do not allow the system to distract the driver while the vehicle is moving. Driver distraction can lead to accidents causing serious injury or death.

To access navigation:

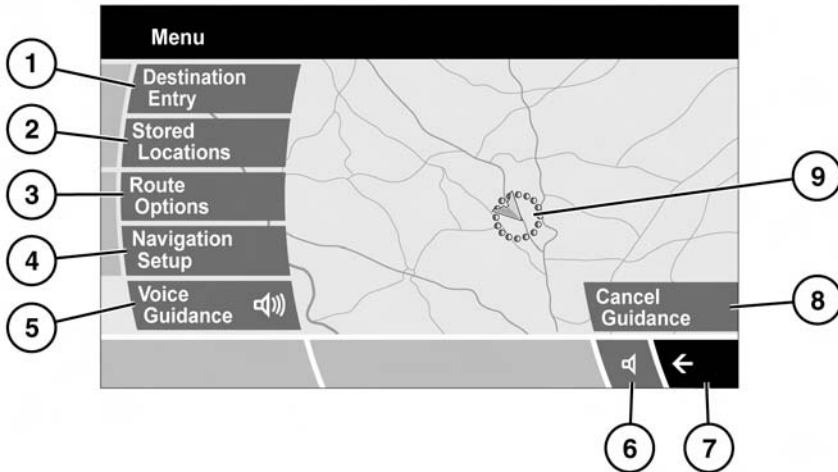
- Select **Navigation** on the home menu.
- Read the caution screen and touch **Agree** or **Language** (if a change of language is required).
- Touching **Agree** gives access to the Main menu screen, see **130, MAIN MENU**.
- Select the menu item required.

There are additional sections in this handbook specifically showing Points of Interest (POI's) and End User Licence Agreements.

Note: *The buttons will disappear after approximately 12 seconds. To view the buttons again, select **Menu**. Touching the map will also remove the buttons.*

Navigation system

MAIN MENU



SJ1763

1. **Destination Entry** - Provides a choice of options for entering a destination.
2. **Stored Locations** - Provides access to any previously stored destinations.
3. **Route Options** - Allows the user to select various options for the route. Also allows the user to cancel guidance during the trip.
4. **Navigation Setup** - Provides access to user selectable settings for the navigation system.
5. **Voice Guidance** - Touch to turn voice guidance on or off.
6. Touch to repeat last voice instruction.
7. Return arrow, returns to the previous screen.
8. **Cancel Guidance** - Touch to cancel guidance.
9. Current vehicle position and direction of travel.

USER SETTINGS

A number of user settings can be made from this menu.

From the **Navigation Setup** menu, select **User Settings**.

Touch the arrow buttons to scroll through the list. Touch to highlight the options required (light blue is not selected, dark blue is selected).

The **Text Size on the MAP** and **Keyboard Layout** options have more than one setting. Touch to toggle between the settings. The current setting is shown in a box alongside the relevant button.

When the User Settings are as required, select **OK**.

LANGUAGE SELECTION

It is possible to change the language used on the navigation display screens. This does not affect the navigation voice language.

From the Navigation Setup menu, select **Language Selection**, see **129, NAVIGATION SETUP**.

Use the arrow buttons to scroll through the list. Touch to select the required language. The display returns to the Navigation Setup menu.

MEASUREMENT UNITS

Distances shown on the screen and given in voice guidance, are either in imperial units (miles and yards) or in metric units (kilometres and metres) and can only be changed from the vehicle touch-screen menu, see **61, VEHICLE SETTINGS**.

SEARCH AREA

Some map databases are divided into counties, states or provinces, called search areas. When setting a route, the destination (or waypoint) being entered must be in the currently selected search area.

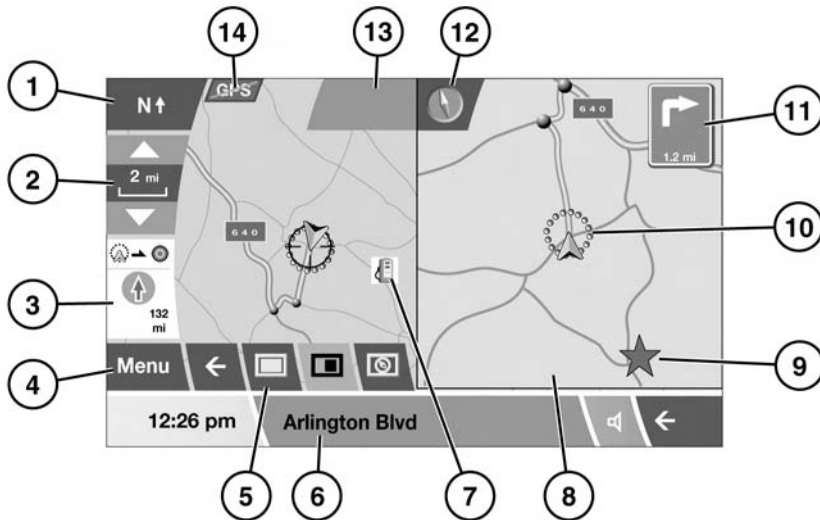
The first time the navigation system is used, the driver should confirm that the correct area has been selected. Once set, it will remain correct for all future use, unless either the battery is disconnected, or a destination in an alternative search area is entered.

To change the search area, select **Search Area** from the **Destination Entry** menu. The currently selected search area is shown highlighted on the map.

Select the search area relevant to your trip, from the list of available areas.

Navigation system

MAP SCREEN



SJ1764

1. Compass (set to North is up). Touch to toggle between this and the small compass which always indicates north (12).
2. Zoom and scale display.
3. Distance display.
4. Menu, touch to access Main menu, see **130, MAIN MENU**.
5. Screen mode selection: Touch to select alternative screen options (split screen option shown above), see **133, SCREEN MODES**.
6. Current street location.
7. POI symbol, see **136, POINTS OF INTEREST (POI)**.
8. Split screen.
9. TMC symbol.
10. Current vehicle position and direction of travel.
11. Next direction display.
12. Compass, always indicates north.
13. Message area.
14. GPS (Global Positioning System), with red arrow indicates a signal is not being received.

SCREEN MODES

Touch the screen mode selection key to view a series of icons depicting different screen modes (as detailed below). Touch the relevant icon to select the desired screen mode.



Full screen view.



Split screen view. A more detailed view of the local area and road system is displayed on the right.



Compass screen.



Shows the next junction in the right half screen.



This view is only available when travelling on a highway. It displays automatically to show remaining highway exits along your route.



Shows list of forthcoming junctions and turn directions on the right half screen.

SETTING A DESTINATION

After touching **Agree**, the initial Main menu screen is displayed.

From the Main menu, select **Destination Entry**.

Select **Address** from the **Destination** screen and input the town name.

Once sufficient letters have been entered, touch **List** to display all the possible towns.

If necessary, use the scroll arrows to the left of the list to search up or down. Select the town you require.

Now enter the road name. Once sufficient letters have been entered, touch **List** to display all the possible roads.

Select the road you require.

Enter the house number of the address (if known) then touch **OK** to confirm.

If the house number is not known, select **OK** - the mid-point of the road is then used as the destination.

Once the address has been entered, the map screen showing the route settings and destination details is displayed.

Touch **Route Prefs.** to change the route settings or **Destination** to start the route calculation.

If a destination is already set, touch **Waypoint** to add the entered address as a waypoint in the journey.

ROUTE PREFERENCES

If **Route Prefs** is selected, the Route Preference screen will be displayed.

Use the arrow buttons to scroll through the list. Touch to highlight the desired option(s) and then select **OK**.

START GUIDANCE

After selecting a destination, the system will calculate the route.

There is now a choice to select **3 Routes**, **Change Route** or to **Start** navigation guidance.

Touch **3 Routes** to display a choice of three different route options on the map.

The three routes are shown in three different colors. Three corresponding boxes showing the route details, are also displayed.

Select route **1**, **2** or **3** by touching the appropriate box.

Touch **Change Route** to select an alternative route or route options.

Navigation system

When you have chosen your route and route options, select **Start**.

Drive away following the voice guidance given by the system.

***Note:** As you approach a junction, in addition to the voice guidance, an inset on the map will display an enlarged view of the junction.*

CANCEL GUIDANCE

To cancel guidance, select **Route Options** from the **Main** menu.

Select **Cancel Guidance** and **Yes** to confirm.

QUICK POI SELECTION

Touch the Map screen to display the POI button.

Touch the **POI** (Point of interest) button. The screen shows six suggested categories, five of which can be selected as quick points of interest.

***Note:** The POI icons will not be shown if the map zoom level is greater than ½ mile (1 km).*

Select a Quick POI category, or select **More** to see further POIs.

Select the five POIs you wish to see when the Quick POIs are displayed.

Select **OK**. The map screen with the POI icon(s) is displayed.

CALIBRATION

If the vehicle has been moved without being driven (e.g. by rail or trailer), the vehicle position/direction may need to be recalibrated, see **134, POSITION/DIRECTION**.

If the tires have been changed, the distance measuring system used by the navigation system will need to be recalibrated.

Select **Calibration** from the **Navigation Setup** menu.

Select the **Distance** button if the tires have been changed. The system automatically recalibrates its distance measurements accordingly.

POSITION/DIRECTION

If the vehicle has been moved without being driven (e.g. by rail or trailer), the vehicle position/direction may need to be recalibrated.

Select **Calibration** from the **Navigation Setup** menu.

Select the **Position/Direction** button.

Touch the appropriate arrow icons to scroll the map until the vehicle position is in the correct location, then select **OK** to confirm.

***Note:** During map scrolling, the vehicle position icon will remain centrally located on the screen, while the map scrolls to the new position.*

The map showing the heading adjustment arrows is displayed. Adjust the heading by touching the arrows until the navigation symbol shows the correct alignment. Select **OK** to confirm the new heading.

RESTORE SYSTEM DEFAULTS

If you have made any changes to the system's default settings, speed settings etc.

Select **Navigation Setup** from the **Main** menu.

Select **Restore Defaults**.

Select **Default** and **Yes** to confirm.

STORED LOCATIONS

This facility enables you to store and manage destinations in the system memory, such as, place of work, home, favorite restaurant or areas to avoid.

In addition to destinations and waypoints, you can save up to 106 memory points, add your home address and save up to 10 areas to avoid.

From the **Main** menu select **Stored Locations** to view a list of options.

Touching any of the Stored Locations submenus allows you to **Add**, **Edit** or **Delete**.

TO ADD A MEMORY POINT

A memory point can be programmed using any of the methods for entering a destination.

For this example, we will choose a freeway exit on the 270.

1. Select **Memory Points** from the **Stored Locations** menu.
2. Select **Add**.
3. Select **Freeway Entry/Exit**.
4. On the keypad select **0-9**, to change the display to a numeric keypad.
5. Enter **270**.
6. Choose **Exit** and select the desired exit from the list.

A map is displayed showing the chosen exit from the highway. Adjust the location (if necessary) by touching the arrow icons to reposition the memory point on the map, then select **OK**.

You now have the option to allocate different attributes to this memory point.

Once the attributes are as required, select **OK**.

AVOID POINTS

After a route has been selected you can set a single or a series of locations you wish to avoid on your route. Once the avoid points are programmed, the system will recalculate the route, avoiding any area designated as an avoid point.

From the **Stored Locations** menu, select **Avoid Points**.

Select **Add**, then use one of the available options (Address, Memory, POI, Postcode etc.) to enter the location of the area to be avoided.

HOME

The Home function allows a stored destination to be selected quickly and therefore is most suited to a destination used frequently (but is not limited to the user's home address). Only one destination can be allocated as Home.

From the **Stored Locations** menu select **HOME**.

To enter a new Home destination, select **Add**.

***Note:** Select **Edit** to edit the details of the existing Home location and select **Delete** to remove the existing Home location.*

Enter the Home destination as you would enter any other destination, adding attributes such as a name, icon, phone number etc.

***Note:** If you intend to enter your home address, it may be advisable to enter an alternative location close by. This is so that in the event of your vehicle being stolen, you do not give away your home address.*

ZIP CODE

Select **Zip code** from the Destination menu, then enter the zip code of your waypoint or destination using the keyboard. Ensure that any spaces and punctuation are entered, otherwise the system may not recognise the postcode.

When the zip code has been entered touch **OK**.

MAP

After selecting **Map** from the **Destination Entry** menu, the local area map is displayed. If the destination or waypoint is not shown on the map, use the zoom button to increase the area.

Navigation system

Touch the arrow icons to scroll the map so that the circle is over the area for your destination or waypoint, zooming in if required.

Select **Destination** or **Waypoint** accordingly.

Note: A Destination must be entered before any Waypoints can be set.

COORDINATES

If you know the coordinates of your destination they can be entered from this screen. The full latitude must be entered first before the longitude coordinates can be entered.

When the coordinates have been entered, touch **OK**.

If the coordinates entered are not contained within the area covered by the available maps, a message will be shown. This can also occur if the incorrect coordinates have been entered.

POINTS OF INTEREST (POI)

The Navigation System DVD contains information about a large number of POIs.

Select **POI Name**, **POI Near** or a **Search Area** from the Destination Entry menu.

Input the POI name, for example Gasoline to display fuel stations on the map, or touch **List** for a list of POIs.

Alternatively, choose **Category** to see all categories of POI and make your selection.

Use the scroll arrows to change pages.

Some POIs are sub-categorised, e.g. selecting **Community** will be further divided into:

- Community Center.
- Exhibition Center.
- Hospital.
- Park & Recreation.
- Town Hall

Note: If entering a POI name results in too many matches being listed, try entering the town name first. If you do not know the name of the POI you want, try selecting a POI category.

Note: POI icons can only be displayed up to the ½ mile (1 km) zoom level.

Once the POI has been selected the route is determined. Touch **Change route**. to change the route settings, or touch **Start** to start the route calculation.

PREVIOUS

After selecting **Previous** from the **Destination Entry** menu, the screen shows a list of stored previous destinations. Use the arrow buttons to scroll through the list, then touch to select your destination.

Note: While driving, list scrolling is not active. You can only choose from the items shown at the top of the list.

FREEWAY

After selecting **Freeway** from the **Destination Entry** menu, enter the freeway name or number, then select an entrance or exit. All of the entrance or exit junctions for the chosen freeway are displayed.

The map showing the selected freeway and the selected exit junction is displayed.

The destination has now been set and the route is calculated.

DEALER LOCATIONS

Details of Jaguar Dealers are held on the Navigation System DVD as a POI category. Certain Dealers may be located in areas that are not fully mapped on the DVD. If a route is set to one of these Dealers, guidance may only be possible to the nearest town center; a warning message will be displayed.

If Jaguar Dealers (or certain other categories, such as airports) are selected, they will be displayed across all search areas.

ENTRY BY TOWN

If a town name is entered first, the points of interest listed will be restricted to that town.

- From the Input POI Name screen, touch **Town**.
- Enter the town name required.
- Touch **List** to display the list of possible towns.
- Select the town required, the Input POI screen is displayed again.
- Enter the POI name required.

Town centers:

- From the Input POI Name screen, enter the town name required in the **Name** text area (do not select the **Town** button).
- Touch **List** to display the list of matches.
- For the town center, select the entry showing the town name only.

Note: In some cases, more than one town center location may be listed.

ENTRY BY CATEGORY

If a POI category is selected first, the points of interest listed will be restricted to that category.

CATEGORIES AND SUB-CATEGORIES

The POI database is divided into a number of categories. Each main category is further divided into a number of sub-categories.

For example, the first entry in the list of Restaurant sub-categories, is **ALL**. This selects all of the Restaurant sub-categories.

To narrow the search, touch the **Town** button. This will display the alpha keyboard, to allow the desired town name to be entered.

SEARCH AREA

When searching the database, only points of interest in the current search area are included, except for the subcategories marked 'All search areas' in the POI category list.

LIST BUTTON

The **List** button becomes active when sufficient characters have been entered for the navigation system to display a list of possibilities. The list is displayed automatically when the number of entries reduces to four or less.

You can also select **List** (when active) without entering a POI name. All the relevant points of interest will be displayed, e.g. in a selected town or category.

ALL BUTTON

The **All** button returns to searching all categories after selecting one specific category.

MEMORY POINTS

The procedure for using memory points is functionally the same as for using the Quick Points of Interest.

The map display shows the location of all stored memory points in view.

- For information about a particular memory point, touch the desired memory point icon.

After touching the memory point icon, the name of the selected memory point is displayed at the top of the screen.

Note: Unlike POIs, memory points are displayed at all zoom levels.

Memory point details

- Touch **Info**. to display the details of the selected memory point.

Navigation system

The details include Icon, Name, Position and Tel. The telephone number can be called by touching the telephone button, if a Jaguar telephone is fitted.

The memory point details can be edited.

NAVTEQ CORPORATION

Please read this agreement carefully before using the Navigation System.

This is a licence agreement for your copy of the Navigable Map Database, (the 'DATABASE') originally made by NAVTEQ Corporation), used in the Navigation System. By using this DATABASE you accept and agree to all the terms and conditions below.

OWNERSHIP

The DATABASE and the copyrights and intellectual property or neighbouring rights therein are owned by NAVTEQ Corporation or its licensors.

LICENCE GRANT

NAVTEQ Corporation grants you a non-exclusive licence to use your copy of the DATABASE for your personal use or for use in your business' internal operations. This license does not include the right to grant sub-licenses.

LIMITATIONS OF USE

The DATABASE is restricted for use in the specific system for which it was created. Except to the extent explicitly permitted by mandatory applicable laws, you may not extract or re-utilize substantial parts of the contents of the DATABASE, not reproduce, copy, modify, adapt, translate, disassemble, decompile, or reverse engineer any portion of the DATABASE.

TRANSFER

You may not transfer the DATABASE to third parties, except together with system for which it was created, provided that you do not retain any copy of the DATABASE, and provided that the transferee agrees to all terms and conditions of this agreement.

DISCLAIMER OF WARRANTY

NAVTEQ Corporation does not warrant or make any representations regarding, either express or implied, regarding the use or results of the use of the DATABASE in terms of its correctness, accuracy, reliability, or otherwise and expressly disclaims any implied warranties of quality, performance, merchantability, fitness for a particular purpose or non-infringement.

NAVTEQ Corporation does not warrant that the DATABASE is or will be error-free. No oral or written information or advice provided by NAVTEQ Corporation, your supplier or any other person shall create a warranty.

LIMITATION OF LIABILITY

The price of the DATABASE does not include any consideration for assumption of risk of consequential, indirect or unlimited direct damages which may arise in connection with your use of the DATABASE.

Accordingly, in no event shall NAVTEQ Corporation or supplier of the navigation system using the DATABASE ('Supplier') be liable for any consequential, special, incidental or indirect damages, including without limitation, loss of revenue, data, or use, incurred by you or any third party arising out of your use of the DATABASE, whether in an action in contract or tort or based on a warranty, even if NAVTEQ Corporation or the Supplier has been advised of the possibility of such damages. In any event, NAVTEQ

Corporation's liability for direct damages is limited to the price of your copy of the DATABASE.

GOVERNMENT END USERS

If the DATABASE is for a region of North America and is being acquired by or on behalf of the United States government or any other entity seeking or applying rights similar to those customarily claimed by the United States government, the DATABASE is licensed with 'limited rights'.

Utilization of the DATABASE is subject to the restrictions specified in the 'Rights in Technical Data and Computer Database' clause at DFARS 252.227-7013, or the equivalent clause for non-defence agencies. Manufacturer of the DATABASE of North America is NAVTEQ Corporation, 10400 W. Higgins Road, Suite 400, Rosemont, Illinois 60018, USA.