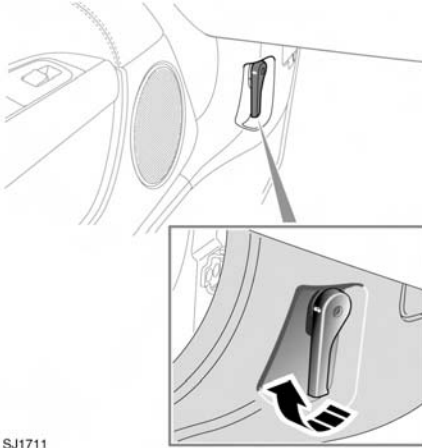


OPENING THE HOOD



SJ1711

1. Pull the hood release handle located in the left-hand front footwell.
2. Reach across to the center rear edge of the hood and lift. The gas filled struts will assist raising the hood and retain it in the fully open position.

CLOSING THE HOOD

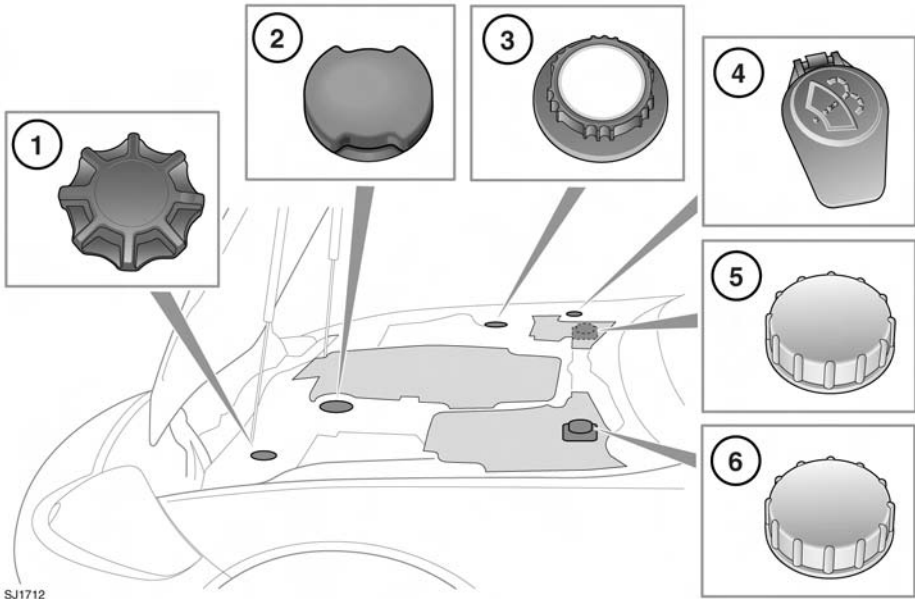
⚠WARNING

Do not drive if the hood is secured by the safety catch alone.

1. Lower the hood to within a distance of 12 to 14 inches (300 to 350 mm) of the fully closed position, then release and allow the hood to shut.
2. Check that both catches are fully engaged by attempting to lift both sides of the hood. This should be free from all movement.

Fluid level checks

ENGINE COMPARTMENT OVERVIEW



SJ1712

⚠ WARNING

Do not drive the vehicle if there is a possibility that leaked fluid will come into contact with a hot surface, such as the exhaust.

⚠ WARNING

While working in the engine compartment, always observe the safety precautions. See 151, SAFETY IN THE GARAGE.

1. Power steering.
2. Engine oil.
3. Coolant.
4. Washer fluid.
5. Brake fluid (right-hand drive vehicles).
6. Brake fluid (left-hand drive vehicles).

CHECKING THE ENGINE OIL LEVEL

NOTICE

Check the engine oil weekly. If any significant or sudden drop in oil level is noted, seek qualified assistance.

NOTICE

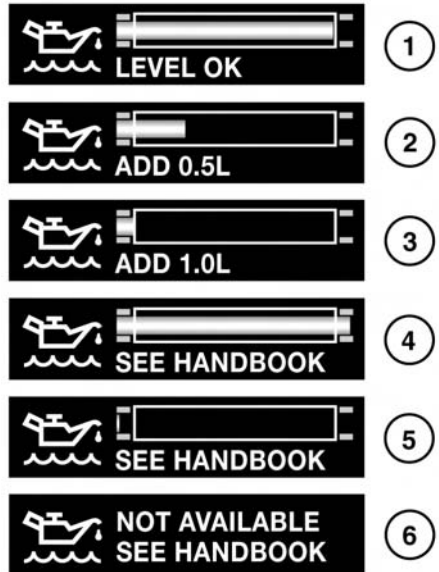
If the message **ENGINE OIL PRESSURE LOW** is displayed, stop the engine as soon as it is safe to do so and seek qualified assistance. Do not start the engine until the cause has been rectified.

Prior to checking the oil level ensure that:

- The vehicle is on level ground.
- The engine oil has reached working temperature (oil is hot).
- The engine has been switched off for ten minutes, as the system will not give an accurate reading until the oil level has stabilized.

The oil level can then be checked as follows:

1. Switch on the ignition (do not start the engine).
2. Ensure Park (P) is selected.
3. Press the trip button (on the end of the lighting control stalk) repeatedly until the oil can icon, along with the current oil level status and topping-up advice is displayed in the message center, as follows.



SJ1713

1. Oil level at recommended level. No top-up required.
2. Add 1 U.S. pint (0.5 litres) of oil.
3. Add 2.1 U.S. pints (1 litre) of oil.
4. Oil level above maximum for safe operation. Do not drive the vehicle. Seek qualified assistance.
5. Oil level below minimum for safe operation. Add 3.2 U.S. pints (1.5 litres) of oil, then recheck the level.
6. Oil level stabilizing, oil level not available. Wait 10 minutes, then recheck the oil level display.

If this display is accompanied by the warning message **ENGINE OIL LEVEL MONITOR SYSTEM FAULT**, seek qualified assistance.

Fluid level checks

ENGINE OIL SPECIFICATION

NOTICE

Low quality or obsolete oils do not provide the protection required by modern, high performance engines.

NOTICE

Failure to use an oil that meets the required specification could cause excessive engine wear, a build up of sludge and deposits and increased pollution. It could also lead to engine failure.

NOTICE

Your vehicle's warranty may be invalidated if damage is caused by the use of unapproved engine oil.

NOTICE

Do not use oil additives of any type as engine damage could occur. Use only specified lubricants.

| Model | Specification |
|------------|---|
| V8 engines | SAE 5W-20 meeting Jaguar specification WSS M2C925-A only. |

Jaguar recommends:

Castrol EDGE Professional



TOPPING UP THE OIL

NOTICE

Overfilling with oil could result in severe engine damage. Oil should be added in small quantities and the level re-checked to ensure that the engine is not overfilled.

1. Unscrew the oil filler cap, see **158, ENGINE COMPARTMENT OVERVIEW**.
2. Add oil as indicated by the message center display.
3. Wait five minutes for the oil level to stabilize then re-check.

It is essential to use the correct specification oil, and to ensure it is suitable for the climatic conditions in which the vehicle is to be operated.

ENGINE OIL CONSUMPTION

A certain amount of oil consumption is normal. The rate of consumption will depend on the following:

- The quality and viscosity of the oil.
- Climatic conditions.
- The speed at which the engine is being operated.
- Road conditions.

Drivers should expect above normal consumption when the engine is new, and after breaking-in if high speeds are sustained.

CHECKING THE COOLANT LEVEL

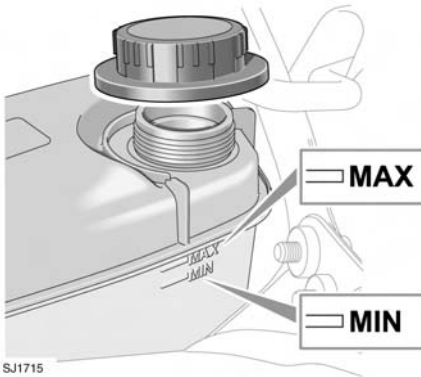
NOTICE

Running the engine without coolant will cause serious engine damage.

NOTICE

If persistent coolant loss is noticed, seek qualified assistance immediately.

The coolant level in the expansion tank should be checked at least weekly (more frequently in high mileage or severe operating conditions). Always check the level when the system is cold.



Ensure the coolant level is maintained between the level indicator marks, as shown in the illustration.

If the message **LOW COOLANT LEVEL** is displayed in the message center, stop the vehicle as soon as safety permits and top-up the coolant reservoir with the recommended antifreeze/water mix.

If the message center displays the message **ENGINE OVERHEATING**, pull off the highway and allow the engine to idle for 5 minutes and then switch off the ignition for 10 minutes. Switch on the engine and, provided that the warning does not occur, continue your journey,

avoiding harsh acceleration. Seek qualified assistance as soon as possible.

TOPPING UP THE COOLANT

⚠ WARNING

Never remove the filler cap when the engine is hot.

⚠ WARNING

Antifreeze is highly inflammable. Do not allow antifreeze to come into contact with naked flames or other sources of ignition (e.g. a hot engine) - a fire may result.

⚠ WARNING

Unscrew the filler cap slowly, allowing the pressure to escape before removing completely.

NOTICE

When travelling in places where the water supply contains salt, always ensure you carry a supply of fresh (rain or distilled) water. Topping up with salt water will cause serious engine damage.

Top-up to the upper level indicator mark located on the side of the expansion tank. Use only a 50% mix of water and antifreeze to specification WSS M97B44 (colored orange) Extended Life Coolant.

Ensure the cap is tightened fully after top-up is completed by turning the cap until the ratchet cap clicks.

Note: *In an emergency, if the approved antifreeze is unavailable, top-up the system with clean water, but be aware of the resultant reduction in frost protection. Do not top-up or refill with conventional antifreeze formulations. If in doubt consult a qualified technician.*

Fluid level checks

BRAKE FLUID CHECK

⚠ WARNING

Seek qualified assistance immediately if brake pedal travel is unusually long, unusually short or if there is any significant loss of brake fluid. Driving under such conditions could result in extended stopping distances or complete brake failure.

BRAKE USA

(!) Canada and Mexico

If the quantity of fluid in the brake reservoir drops below the recommended level, a red warning lamp in the instrument panel will illuminate and the message **Brake Fluid Low** will be displayed in the message center.

Note: If the warning lamp illuminates or the message is displayed while the vehicle is being driven, stop the vehicle as soon as safety permits by gently applying the brakes. Check and top-up the fluid level if necessary.

⚠ WARNING

Brake fluid is highly toxic - keep containers sealed and out of the reach of children. If accidental consumption is suspected, seek medical attention immediately.

⚠ WARNING

If the fluid comes into contact with the skin or eyes, rinse immediately with plenty of water.

⚠ WARNING

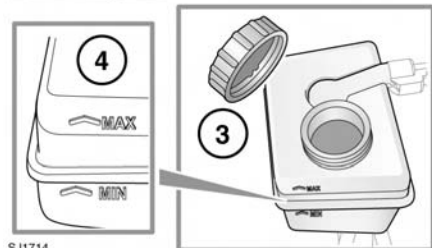
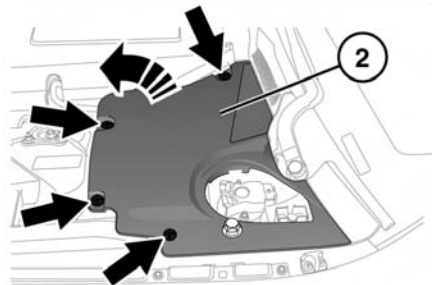
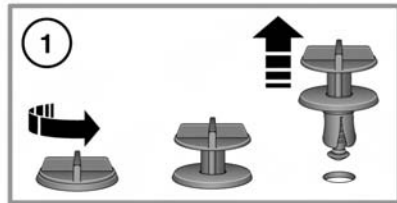
Brake fluid is highly inflammable. Do not allow brake fluid to come into contact with naked flames or other sources of ignition (e.g. a hot engine).

⚠ WARNING

Do not drive the vehicle with the fluid level below the MIN mark.

With the vehicle on level ground, check the fluid level at least every week (more frequently in high mileage or arduous operating conditions).

The brake fluid reservoir is located beneath a cover on the raised platform to the rear of the main underhood area, see **158, ENGINE COMPARTMENT OVERVIEW**.



SJ1714

1. Remove the fixings securing the cover panel.
2. Remove the cover panel.

3. Clean the filler cap with a clean, dry cloth before removing, to prevent dirt or moisture from entering the reservoir.
4. The brake fluid level should be between the **MIN** and the **MAX** marks on the side of the reservoir.

The fluid level may drop slightly during normal use, as a result of brake pad wear, but should not be allowed to drop below the **MIN** mark.

TOPPING UP THE BRAKE FLUID

NOTICE

Brake fluid will damage painted surfaces. Soak up any spillage with an absorbent cloth immediately and wash the area with a mixture of car shampoo and water.

NOTICE

Only use new fluid from an airtight container (fluid from open containers or fluid previously bled from the system, will have absorbed moisture, which will adversely affect performance, and must not be used).

1. Top up the reservoir to the **MAX** mark using Shell DOT4 ESL brake fluid. If unavailable, a low viscosity brake fluid that meets ISO 4925 class 6 specification. Only fluid of this type and standard may be used.
2. Replace the reservoir cap.
3. Refit the reservoir cover panel and fixings.

CHECKING THE POWER STEERING FLUID LEVEL

WARNING

Power steering fluid is highly toxic. Keep containers sealed and out of reach of children. If accidental consumption of fluid is suspected, seek medical attention immediately.

WARNING

If the fluid comes into contact with the skin or eyes, rinse immediately with plenty of water.

WARNING

Power steering fluid is highly inflammable. Do not allow power steering fluid to come into contact with naked flames or other sources of ignition (e.g. a hot engine).

NOTICE

The engine must not be started if the fluid level has dropped below the **MIN** mark.

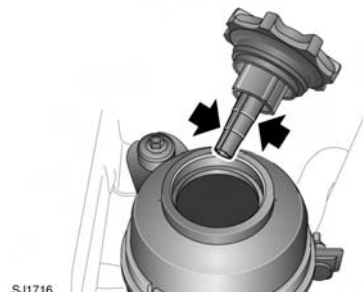
NOTICE

Seek qualified assistance immediately if there is a noticeable drop in the fluid level.

NOTICE

If fluid loss is slow, the reservoir may be topped-up to the upper level mark to enable the vehicle to be driven to a repair facility for examination. However, it is recommended that you seek qualified assistance before driving the vehicle.

Check and top-up the fluid with the vehicle on level ground, with the engine switched off and the system cold. Ensure that the steering wheel is not turned after stopping the engine.



1. Clean the filler cap before removing to prevent dirt from entering the reservoir, see **158, ENGINE COMPARTMENT OVERVIEW**.

Fluid level checks

2. Remove filler cap and check that fluid level is between the upper and lower marks (arrowed) on the reservoir dipstick.

TOPPING UP THE POWER STEERING FLUID

NOTICE

It is imperative that the power steering system does not become contaminated in any way. Always use new fluid and clean the area around the filler neck both before removing the filler cap and after topping up. Never return drained fluid to the system.

NOTICE

Power steering fluid will damage painted surfaces. Soak up any spillage with an absorbent cloth immediately and wash the area with a mixture of car shampoo and water.

If the fluid is below the lower mark on the reservoir dipstick, top-up with Pentosin CHF202 power steering fluid. Do not over fill.

CHECKING THE WASHER FLUID LEVEL

⚠ WARNING

Some windshield washer fluids are highly flammable. Do not allow windshield washer fluid to come into contact with naked flames or sources of ignition as this can cause a fire or explosion.

⚠ WARNING

If the vehicle is operated in temperatures below 40°F (4°C), use a washer fluid with antifreeze protection. In cold weather, failure to use a washer fluid with frost protection could result in impaired vision and increase the risk of an accident.

NOTICE

Only use approved washer fluid.

NOTICE

Take care to avoid spillage, particularly if an undiluted or high concentration is being used. If spillage occurs, wash the affected area immediately with water.

The washer reservoir supplies the windshield and headlamp washer jets.

Check and top-up the reservoir level at least every week.

Fill with Jaguar Windshield Washer Fluid, diluted with clean water, as specified in the instructions on the bottle. Using a non-approved fluid may adversely affect the wiper blade rubber, resulting in ineffectual and noisy wiping.

Operate the washers periodically to check that the nozzles are clear and properly directed.

TOPPING UP THE WASHER FLUID

1. Clean the filler cap before opening to prevent dirt from entering the reservoir.
2. Open filler cap, see **158, ENGINE COMPARTMENT OVERVIEW**.
3. Top-up the reservoir until the fluid is visible in the filler neck.
4. Close filler cap.