

STARTING THE ENGINE

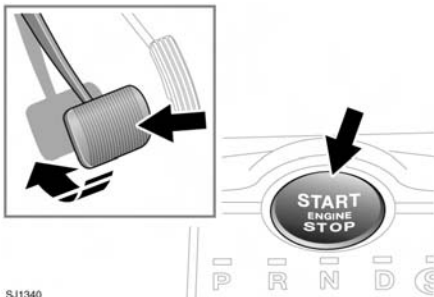
⚠ WARNING

Never start the engine, or leave it running, when the vehicle is in an enclosed space. exhaust gasses are poisonous and can cause unconsciousness and death if inhaled.

NOTICE

If the engine fails to start, do not continue cranking as this will discharge the battery. It may also damage the catalytic convertor due to unburnt fuel passing through the exhaust.

Note: The Smart Key may not be detected if it is placed within a metal container or if it is shielded by a device with a back-lit LCD screen, such as a smart phone, laptop (including laptop bag), games console etc. Keep the Smart Key clear of such devices when attempting Keyless entry or Keyless starting.



SJ1340

To start the engine:

1. Ensure that a valid Smart Key is inside the vehicle.
2. Ensure that Park (P) or Neutral (N) is selected.
3. Firmly press the brake pedal.
4. Press and release the engine **START/STOP** button.

Once the engine has started, the brake pedal can be released if it is safe to do so.

Note: If, during the start procedure, the brake pedal is released, a gear change is made or if a fault occurs, **Smart Start cancelled** is displayed in the message center and the start procedure is cancelled.

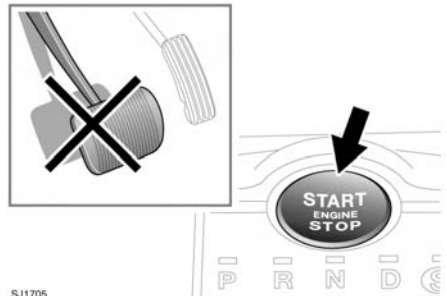
SWITCHING OFF THE ENGINE

⚠ WARNING

Never stop the engine while the vehicle is in motion.

1. Ensure that the vehicle is parked with Park (P) selected and the parking brake applied.
2. Press and release the engine **START/STOP** button.

SWITCHING ON THE IGNITION



SJ1705

To switch on the ignition without starting the engine.

1. Ensure the brake pedal is not depressed and that a valid Smart Key is inside the vehicle.
2. Press and hold the engine **START/STOP** button until the warning lamps illuminate.
3. Release the engine **START/STOP** button.

NOTICE

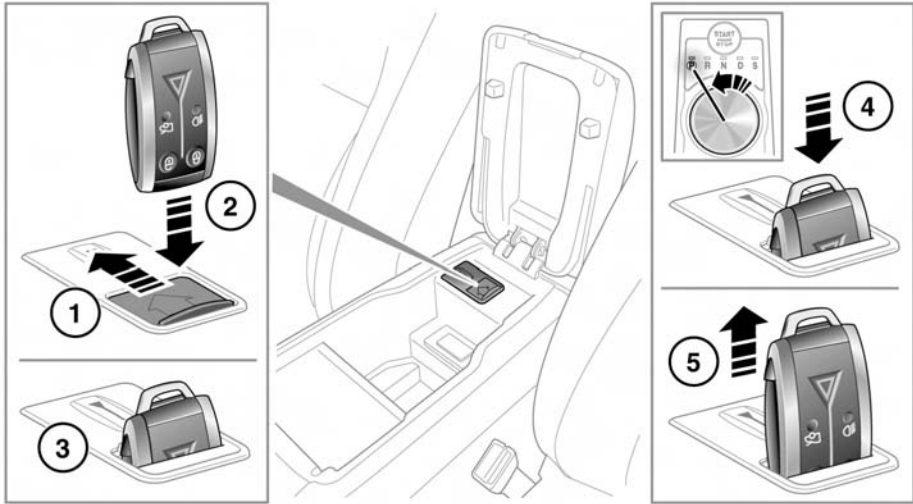
If the brake pedal is applied when the **START/STOP** button is pressed, the engine will start.

Starting the engine

KEYLESS START BACKUP

If the vehicle has been unlocked using the emergency key blade or the Smart Key is not detected by the vehicle, it will be necessary to use the keyless start backup to disarm the alarm and start the engine.

Note: If the Jaguar Smart Key is placed in the door pocket, it may be outside the range of the sensors when the door is open



If the Smart Key fails to operate, **Smart Key Not Found- Refer to Handbook** is displayed in the message center. To start the engine it will be necessary to dock the Smart Key, as follows:

1. Lift the lid on the center console stowage compartment. Slide open the cover of the starter control unit.
2. Insert the Smart Key fully into the starter control unit, as shown.

Note: When docking the Smart Key, it is recommended that the emergency key blade is left in place. The end of the blade can then be used as a handle, to pull the Smart Key from the control unit when undocking.

3. Ensure the Smart Key is securely docked, then press and release the START/STOP button with the brake pedal applied to start the engine.
4. To undock the smart key, ensure that the gear selector is in the **P** position and the ignition is switched off, then press and release the Smart Key. The Smart Key will eject from the starter control unit.

NOTICE

Ensure that the ignition is switched off before undocking the Smart Key, otherwise damage to the Smart Key may occur.

5. Remove the Smart Key.

If the engine still fails to start, seek qualified assistance.

IF THE ENGINE FAILS TO START

Note: *If the engine fails to crank when the engine START/STOP button is pressed and there has been a recent collision, the fuel system inertia switch may have been tripped. Seek qualified assistance.*

If the engine persistently fails to start:

1. Ensure the brake pedal is not depressed and that a valid Smart Key is inside the vehicle.
2. Ensure that Park (**P**) or Neutral (**N**) is selected.
3. Press and hold the engine **START/STOP** button until the warning lamps illuminate.
4. Slowly depress the accelerator pedal fully and hold it in the fully depressed position.
5. Press and release the engine **START/STOP** button. The engine will begin to crank.

If the engine still fails to start, or fails to crank, consult your Dealer/Authorized Repairer.

SWITCHING OFF THE ENGINE WHILE MOVING

NOTICE

It is not advisable to switch off the engine while the vehicle is moving. However, should such a situation arise where the engine has to be switched off, then the following procedure applies.

- Press and hold the engine START/STOP button for 2 seconds, or;
- Press the engine START/STOP button twice within 2 seconds.

In either case, the warning **Engine stop button pressed** will be displayed in the message center.

ROLLING RE-START

If the engine is switched off while the vehicle is moving, a rolling re-start can be initiated by selecting neutral and pressing the engine START/STOP button.