

IMPORTANT INFORMATION

WARNING

Do not rest your foot on the brake pedal while the vehicle is in motion. This may result in the brakes overheating, thus reducing their effectiveness.

WARNING

Never allow the vehicle to coast (freewheel) with the engine turned off. The engine must be running to provide full braking assistance. The brakes will still function with the engine off, but far more pressure will be required to operate them.

WARNING

If the red brake warning lamp illuminates, safely bring the vehicle to a stop, as quickly as possible. Seek qualified assistance before proceeding.

WARNING

Never place non-approved floor matting or any other obstructions under the brake pedal. This restricts pedal travel and braking efficiency, and may cause a crash.

WARNING

Do not pump the brake pedal at any time, this will interrupt operation of the system and may increase stopping distances.

Driving through heavy rain or water can have an adverse effect on braking efficiency. Under such circumstances, it is recommended that you lightly apply the brakes intermittently to dry the brakes.

BRAKE WARNING LAMPS



USA



Canada

If this warning lamp illuminates while driving and/or the message **Brake Fluid Low** is displayed in the message center, check the brake fluid level at the earliest opportunity and top-up as required.



USA



Canada

If this warning lamp illuminates amber while driving and/or **ABS FAULT** is displayed in the message center, drive with extra caution, avoid heavy braking where possible, and seek qualified assistance as soon as possible.

*Note: This warning lamp will also illuminate if there is a fault with the parking brake. See 87, **ELECTRIC PARKING BRAKE (EPB)**.*

ELECTRONIC BRAKE FORCE DISTRIBUTION (EBD)

EBD balances the distribution of braking forces between the wheels on the front and rear axles, to maintain maximum braking under all vehicle loading conditions.

For example; Under light loads, EBD applies less braking effort to the rear wheels, to maintain stability. Conversely, it allows full braking effort to the rear wheels when the vehicle is heavily laden.

A fault with the EBD system is indicated by the red brake warning lamp and the message **EBD FAULT**. The braking system will still operate, but without EBD assistance. Seek qualified assistance to have the fault rectified.

EMERGENCY BRAKE ASSIST (EBA)

The EBA system measures the rate at which the brake pressure increases. If the system detects an emergency braking situation, EBA automatically initiates full braking effect. This can reduce stopping distances in critical situations.

A fault with the EBA system is indicated by the brake warning lamp illuminating and **Emergency Brake Assist Not Available** displaying in the message center. The braking system will still function, but without EBA assistance. Seek qualified assistance to have the fault rectified.

ELECTRIC PARKING BRAKE (EPB)

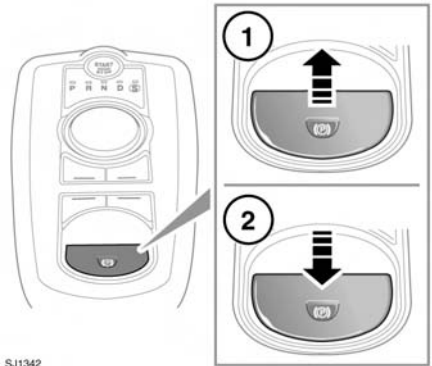
⚠ WARNING

Do not rely on the parking brake to hold the vehicle stationary if the brake warning lamp is illuminated. Seek qualified assistance urgently.

The switch which operates the parking brake is mounted on the center console to the rear of the gear selector.

NOTICE

Always apply the parking brake when the vehicle is parked.



SJ1342

To engage the parking brake: Pull the parking brake switch upwards (1) and release. The switch will return to the neutral position.

The red brake warning lamp on the instrument panel will illuminate.

The Drive Away Release feature allows the parking brake to release automatically as the vehicle is driven away.

The warning lamp will remain on briefly if the parking brake is applied when the ignition system is reverted to convenience mode.

Brakes

If a fault in the system is detected, the amber brake warning lamp will illuminate and **PARK BRAKE FAULT** or **CANNOT APPLY PARK BRAKE** will be displayed in the message center. Seek qualified assistance as soon as possible.

If the battery has been discharged or disconnected, **APPLY FOOT AND PARK BRAKE** will be displayed in the message center when the ignition is next switched on. Depress the foot brake and pull the parking brake switch up to apply the parking brake. This is required to reset the parking brake system. The parking brake will now function correctly.

To disengage the parking brake: With the ignition system on or with the engine running, apply the foot brake and press the parking brake switch down (2).

If the parking brake is applied while the vehicle is stationary and **D** or **R** is selected, applying the throttle will automatically release the parking brake.

The parking brake is also automatically released when the gear selector is moved from the **P** position.

If the parking brake is inadvertently applied when the vehicle is moving at above 1.8 mph (3 km/h), **PARK BRAKE APPLIED** is displayed in the message center, the warning indicator in the instrument panel will illuminate and a warning chime will sound.

If the parking brake is applied while the vehicle is moving, releasing the switch will disengage the parking brake. The parking brake cannot be applied when the vehicle is moving, if the accelerator pedal is pressed.

Note: *If the vehicle is in motion, the parking brake should only be used as an emergency brake.*